

Datasheet for ABIN3044046  
**anti-NR4A3 antibody (C-Term)**

## 3 Images

[Go to Product page](#)

## Overview

Quantity:	100 µg
Target:	NR4A3
Binding Specificity:	AA 612-631, C-Term
Reactivity:	Human, Rat
Host:	Rabbit
Clonality:	Polyclonal
Conjugate:	This NR4A3 antibody is un-conjugated
Application:	Western Blotting (WB), Immunohistochemistry (Paraffin-embedded Sections) (IHC (p))

## Product Details

Purpose:	Rabbit IgG polyclonal antibody for Tyrosine-protein kinase Tec(TEC) detection. Tested with WB, IHC-P in Human,Mouse,Rat.
Immunogen:	A synthetic peptide corresponding to a sequence at the C-terminus of human Tec(612-631aa FEDLLRTIDELVECEETFGR), identical to the related rat sequence, and different from the related mouse sequence by one amino acid.
Sequence:	FEDLLRTIDE LVECEETFGR
Isotype:	IgG
Cross-Reactivity (Details):	<p>Predicted Cross Reactivity: mouse</p> <p>No cross reactivity with other proteins.</p> <p>Predicted Cross Reactivity: Species predicted to be fit for the product based on sequence similarities.</p>

## Product Details

Characteristics:	Rabbit IgG polyclonal antibody for Tyrosine-protein kinase Tec(TEC) detection. Tested with WB, IHC-P in Human,Mouse,Rat. Gene Name: tec protein tyrosine kinase Protein Name: Tyrosine-protein kinase Tec
Purification:	Immunogen affinity purified.

## Target Details

Target:	NR4A3
Alternative Name:	TEC ( <a href="#">NR4A3 Products</a> )
Background:	<p>TEC(TEC Protein Tyrosine Kinase), is an enzyme that in humans is encoded by the TEC gene. The protein encoded by this gene belongs to the Tec family of non-receptor protein-tyrosine kinases containing a pleckstrin homology domain. By fluorescence in situ hybridization, Sato et al.(1994) mapped the gene to 4p12, the same location reported for TXK. Mouse Tec is a non-receptor type protein-tyrosine kinase that is highly expressed in many hematopoietic cell lines. Hantschel et al.(2007) identified TEC kinase and BTK kinase as major binders of the tyrosine kinase inhibitor dasatinib, which is used for treatment of BCR/ABL-positive CML.</p> <p>Synonyms: MGC126760 antibody MGC126762 antibody PSCTK4 antibody Tec antibody Tec protein tyrosine kinase antibody TEC_HUMAN antibody Tyrosine protein kinase antibody Tyrosine-protein kinase Tec antibody</p>
UniProt:	<a href="#">P42680</a>
Pathways:	<a href="#">Fc-epsilon Receptor Signaling Pathway</a> , <a href="#">Nuclear Receptor Transcription Pathway</a> , <a href="#">Steroid Hormone Mediated Signaling Pathway</a>

## Application Details

Application Notes:	WB: Concentration: 0.1-0.5 µg/mL, Tested Species: Human, Rat, Predicted Species: Mouse IHC-P: Concentration: 0.5-1 µg/mL, Tested Species: Human, Rat, Predicted Species: Mouse, Epitope Retrieval by Heat: Boiling the paraffin sections in 10 mM citrate buffer, pH 6.0, for 20 mins is required for the staining of formalin/paraffin sections. Notes: Tested Species: Species with positive results. Predicted Species: Species predicted to be fit for the product based on sequence similarities. Other applications have not been tested. Optimal dilutions should be determined by end users.
Comment:	Antibody can be supported by chemiluminescence kit ABIN921124 in WB, supported by

## Application Details

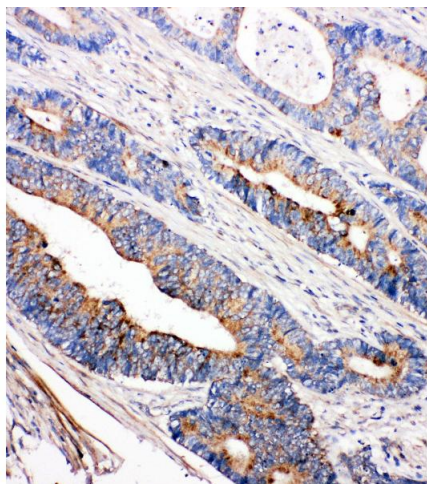
ABIN921231 in IHC(P).

Restrictions: For Research Use only

## Handling

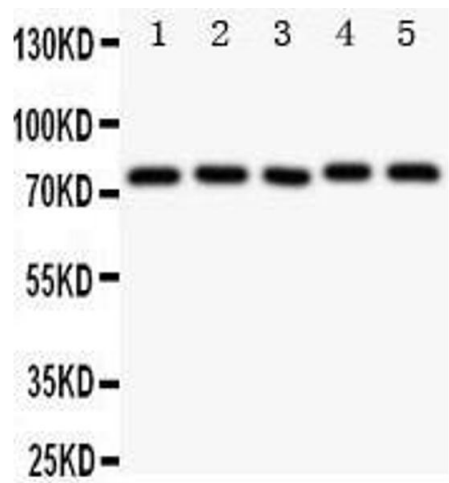
Format:	Lyophilized
Reconstitution:	Add 0.2 mL of distilled water will yield a concentration of 500 µg/mL.
Concentration:	500 µg/mL
Buffer:	Each vial contains 5 mg BSA, 0.9 mg NaCl, 0.2 mg Na <sub>2</sub> HPO <sub>4</sub> , 0.05 mg Thimerosal, 0.05 mg Sodium azide.
Preservative:	Thimerosal (Merthiolate), Sodium azide
Precaution of Use:	This product contains Sodium azide and Thimerosal (Merthiolate): POISONOUS AND HAZARDOUS SUBSTANCES which should be handled by trained staff only.
Handling Advice:	Avoid repeated freezing and thawing.
Storage:	4 °C/-20 °C
Storage Comment:	At -20°C for one year. After reconstitution, at 4°C for one month. It can also be aliquotted and stored frozen at -20 °C for a longer time. Avoid repeated freezing and thawing.
Expiry Date:	12 months

## Images



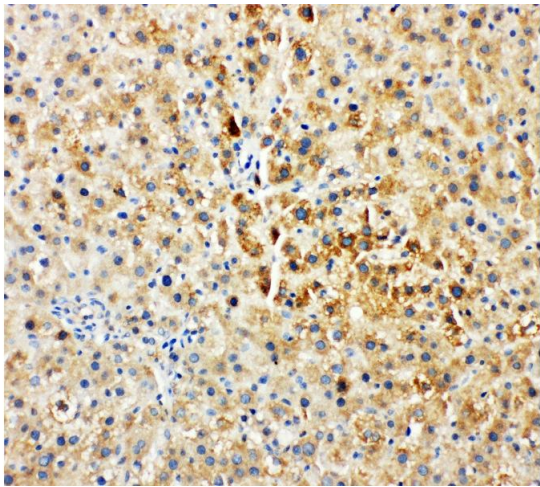
### Immunohistochemistry

**Image 1.** Anti-Tec antibody, IHC(P) IHC(P): Human Intestinal Cancer Tissue



**Western Blotting**

**Image 2.** Anti-Tec antibody, Western blotting Lane 1: Rat Liver Tissue Lysate Lane 2: Rat Spleen Tissue Lysate Lane 3: Rat Kidney Tissue Lysate Lane 4: HELA Cell Lysate Lane 5: JURKAT Cell Lysate



**Immunohistochemistry**

**Image 3.** Anti-Tec antibody, IHC(P) IHC(P): Rat Liver Tissue