

Datasheet for ABIN3044054
anti-CYP2U1 antibody (C-Term)

3 Images

[Go to Product page](#)

Overview

Quantity:	100 µg
Target:	CYP2U1
Binding Specificity:	AA 457-473, C-Term
Reactivity:	Human
Host:	Rabbit
Clonality:	Polyclonal
Application:	Western Blotting (WB), Immunocytochemistry (ICC), Immunohistochemistry (Paraffin-embedded Sections) (IHC (p))

Product Details

Purpose:	Rabbit IgG polyclonal antibody for Cytochrome P450 2U1(CYP2U1) detection. Tested with WB, IHC-P, ICC in Human.
Immunogen:	A synthetic peptide corresponding to a sequence at the C-terminus of human CYP2U1(457-473aa EKPEDFYFYPNRFLDDQGQ).
Sequence:	EKPEDFYFYPNR FLDDQGQ
Isotype:	IgG
Cross-Reactivity (Details):	No cross reactivity with other proteins.
Characteristics:	<p>Rabbit IgG polyclonal antibody for Cytochrome P450 2U1(CYP2U1) detection. Tested with WB, IHC-P, ICC in Human.</p> <p>Gene Name: cytochrome P450, family 2, subfamily U, polypeptide 1</p> <p>Protein Name: Cytochrome P450 2U1</p>

Product Details

Purification: Immunogen affinity purified.

Target Details

Target: CYP2U1

Alternative Name: CYP2U1 ([CYP2U1 Products](#))

Background: CYP2U1(Cytochrome P450, Family 2, Subfamily U, Polypeptide 1), is a protein that in humans is encoded by the CYP2U1 gene. Members of the P450 enzyme family have roles in the tissue-specific conversion of substrates into locally active hormones, vitamins, and signaling molecules, including arachidonic acid derivatives known as eicosanoids. The International Radiation Hybrid Mapping Consortium mapped the CYP2U1 gene to chromosome 4. Chuang et al.(2004) stated that CYP2U1 maps to 4q25. Using recombination experiments in Sf9 insect cells, Chuang et al.(2004) found that CYP2U1 metabolized arachidonic acid, docosahexaenoic acid(DHA), and other long chain fatty acids. Chuang et al.(2004) suggested that CYP2U1 may play a role in brain and immune functions.

Synonyms: CP2U1_HUMAN antibody|CYP2U 1 antibody|CYP2U1 antibody|Cytochrome P450 2U1 antibody|Cytochrome P450, family 2, subfamily U, polypeptide 1 antibody|EC 1.14.14.1 antibody|P450TEC antibody

UniProt: [Q7Z449](#)

Application Details

Application Notes: WB: Concentration: 0.1-0.5 µg/mL, Tested Species: Human
IHC-P: Concentration: 0.5-1 µg/mL, Tested Species: Human, Epitope Retrieval by Heat: Boiling the paraffin sections in 10 mM citrate buffer, pH 6.0, for 20 mins is required for the staining of formalin/paraffin sections.
ICC: Concentration: 0.5-1 µg/mL, Tested Species: Human
Notes: Tested Species: Species with positive results. Predicted Species: Species predicted to be fit for the product based on sequence similarities. Other applications have not been tested.
Optimal dilutions should be determined by end users.

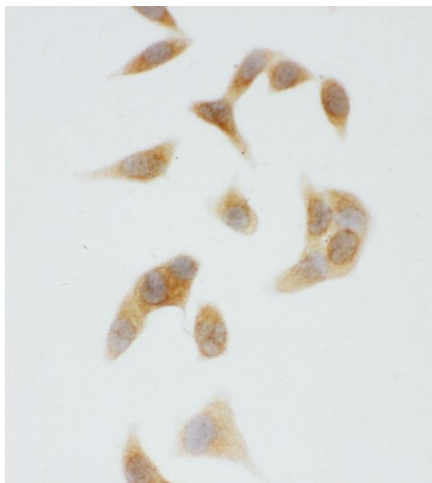
Comment: Antibody can be supported by chemiluminescence kit ABIN921124 in WB, supported by ABIN921231 in IHC(P) and ICC.

Restrictions: For Research Use only

Handling

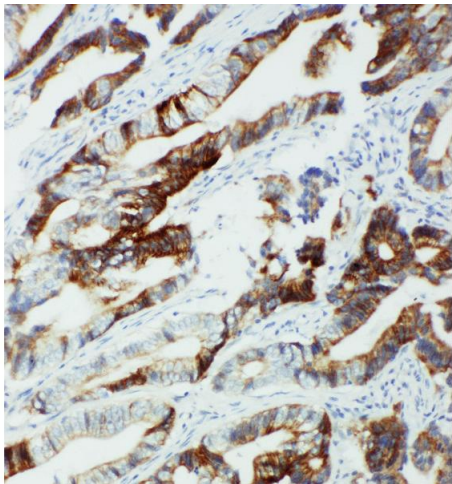
Format:	Lyophilized
Reconstitution:	Add 0.2 mL of distilled water will yield a concentration of 500 µg/mL.
Concentration:	500 µg/mL
Buffer:	Each vial contains 5 mg BSA, 0.9 mg NaCl, 0.2 mg Na ₂ HPO ₄ , 0.05 mg Thimerosal, 0.05 mg Sodium azide.
Preservative:	Thimerosal (Merthiolate), Sodium azide
Precaution of Use:	This product contains Sodium azide and Thimerosal (Merthiolate): POISONOUS AND HAZARDOUS SUBSTANCES which should be handled by trained staff only.
Handling Advice:	Avoid repeated freezing and thawing.
Storage:	4 °C/-20 °C
Storage Comment:	At -20°C for one year. After reconstitution, at 4°C for one month. It can also be aliquotted and stored frozen at -20 °C for a longer time. Avoid repeated freezing and thawing.
Expiry Date:	12 months

Validation report #300031 for Immunohistochemistry (IHC)



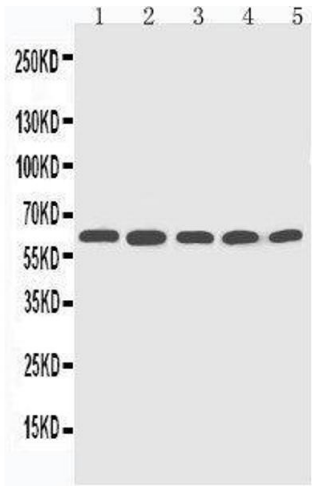
Immunohistochemistry

Image 1. Anti-CYP2U1 antibody, ICC ICC: HELA Cell



Immunohistochemistry

Image 2. Anti-CYP2U1 antibody, IHC(P) IHC(P): Human Intestinal Cancer Tissue



Western Blotting

Image 3. Anti-CYP2U1 antibody, Western blotting Lane 1: HELA Cell Lysate Lane 2: MCF-7 Cell Lysate Lane 3: MM453 Cell Lysate Lane 4: COLO320 Cell Lysate Lane 5: Cell Lysate