

Datasheet for ABIN3044065
anti-RGS3 antibody (C-Term)[Go to Product page](#)

2 Images

Overview

Quantity:	100 µg
Target:	RGS3
Binding Specificity:	AA 909-925, C-Term
Reactivity:	Human, Rat
Host:	Rabbit
Clonality:	Polyclonal
Conjugate:	This RGS3 antibody is un-conjugated
Application:	Western Blotting (WB), Immunohistochemistry (Paraffin-embedded Sections) (IHC (p))

Product Details

Purpose:	Rabbit IgG polyclonal antibody for Regulator of G-protein signaling 3(Rgs3) detection. Tested with WB, IHC-P in Human,Mouse,Rat.
Immunogen:	A synthetic peptide corresponding to a sequence at the C-terminus of mouse RGS3(909-925aa DSYTREHTKENLQSITR), identical to the related rat sequence, and different from the related human sequence by two amino acids.
Sequence:	DSYTREHTKE NLQSITR
Isotype:	IgG
Cross-Reactivity (Details):	<p>Predicted Cross Reactivity: mouse</p> <p>No cross reactivity with other proteins.</p> <p>Predicted Cross Reactivity: Species predicted to be fit for the product based on sequence similarities.</p>

Product Details

Characteristics:	Rabbit IgG polyclonal antibody for Regulator of G-protein signaling 3(Rgs3) detection. Tested with WB, IHC-P in Human,Mouse,Rat. Gene Name: regulator of G-protein signaling 3 Protein Name: Regulator of G-protein signaling 3
Purification:	Immunogen affinity purified.

Target Details

Target:	RGS3
Alternative Name:	Rgs3 (RGS3 Products)
Background:	<p>RGS3(Regulator of G Protein Signaling 3), is a protein that in humans is encoded by the RGS3 gene. Chatterjee et al.(1997) studied RGS3, the largest member of the RGS family then identified. Mouse Pdz-Rgs3 can mediate signaling from the ephrin-B cytoplasmic tail. By radiation hybrid mapping, Chatterjee et al.(1997) assigned the RGS3 gene to chromosome 9q31-q33. Lu et al.(2001) showed that Sdf1, a chemokine with a G protein-coupled receptor, and Bdnf are chemoattractants for cerebellar granule cells, and that Sdf1 chemoattraction is selectively inhibited by soluble ephrin-B receptor. This inhibition could be blocked by a truncated Pdz-Rgs3 protein lacking the RGS domain.</p> <p>Synonyms: C2PA antibody FLJ20370 antibody FLJ31516 antibody FLJ90496 antibody PDZ RGS 3 antibody PDZ RGS3 antibody Regulator of G protein signaling 3 antibody Regulator of G protein signalling 3 antibody Regulator of G-protein signaling 3 antibody RGP 3 antibody RGP3 antibody RGS 3 antibody RGS3 antibody RGS3_HUMAN antibody</p>
Pathways:	Myometrial Relaxation and Contraction , Regulation of G-Protein Coupled Receptor Protein Signaling

Application Details

Application Notes:	WB: Concentration: 0.1-0.5 µg/mL, Tested Species: Human, Rat, Predicted Species: Mouse IHC-P: Concentration: 0.5-1 µg/mL, Tested Species: Human, Rat, Predicted Species: Mouse, Epitope Retrieval by Heat: Boiling the paraffin sections in 10 mM citrate buffer, pH 6.0, for 20 mins is required for the staining of formalin/paraffin sections. Notes: Tested Species: Species with positive results. Predicted Species: Species predicted to be fit for the product based on sequence similarities. Other applications have not been tested. Optimal dilutions should be determined by end users.
--------------------	--

Application Details

Comment: Antibody can be supported by chemiluminescence kit ABIN921124 in WB, supported by ABIN921231 in IHC(P).

Restrictions: For Research Use only

Handling

Format: Lyophilized

Reconstitution: Add 0.2 mL of distilled water will yield a concentration of 500 µg/mL.

Concentration: 500 µg/mL

Buffer: Each vial contains 5 mg BSA, 0.9 mg NaCl, 0.2 mg Na₂HPO₄, 0.05 mg Thimerosal, 0.05 mg Sodium azide.

Preservative: Thimerosal (Merthiolate), Sodium azide

Precaution of Use: This product contains Sodium azide and Thimerosal (Merthiolate): POISONOUS AND HAZARDOUS SUBSTANCES which should be handled by trained staff only.

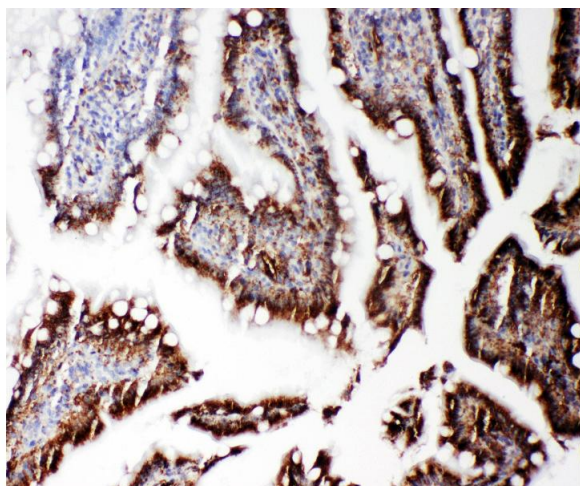
Handling Advice: Avoid repeated freezing and thawing.

Storage: 4 °C/-20 °C

Storage Comment: At -20°C for one year. After reconstitution, at 4°C for one month.
It can also be aliquotted and stored frozen at -20 °C for a longer time. Avoid repeated freezing and thawing.

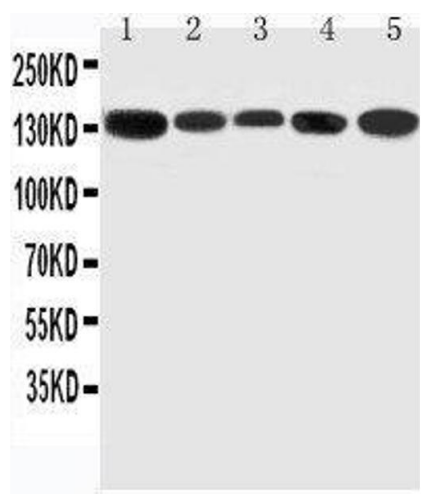
Expiry Date: 12 months

Images



Immunohistochemistry

Image 1. Anti-RGS3 antibody, IHC(P) IHC(P): Rat Intestine Tissue



Western Blotting

Image 2. Anti-RGS3 antibody, Western blotting Lane 1: Rat Testis Tissue Lysate Lane 2: Rat Brain Tissue Lysate Lane 3: Rat Spleen Tissue Lysate Lane 4: HELA Cell Lysate Lane 5: U87 Cell Lysate