



[Go to Product page](#)

Datasheet for ABIN3044077

## anti-PCSK1 antibody (C-Term)

### 2 Images

#### Overview

Quantity:	100 µg
Target:	PCSK1
Binding Specificity:	AA 726-740, C-Term
Reactivity:	Rat, Human
Host:	Rabbit
Clonality:	Polyclonal
Conjugate:	This PCSK1 antibody is un-conjugated
Application:	Western Blotting (WB), Immunohistochemistry (Paraffin-embedded Sections) (IHC (p))

#### Product Details

Purpose:	Rabbit IgG polyclonal antibody for Neuroendocrine convertase 1(PCSK1) detection. Tested with WB, IHC-P in Human,Mouse,Rat.
Immunogen:	A synthetic peptide corresponding to a sequence at the C-terminus of human PC1/3(726-740aa DVFYNTKPYKHRDDR), identical to the related mouse and rat sequences.
Sequence:	DV FYNTKPYK HRDDR
Isotype:	IgG
Cross-Reactivity (Details):	Predicted Cross Reactivity: mouse No cross reactivity with other proteins. Predicted Cross Reactivity: Species predicted to be fit for the product based on sequence similarities.
Characteristics:	Rabbit IgG polyclonal antibody for Neuroendocrine convertase 1(PCSK1) detection. Tested with

## Product Details

---

WB, IHC-P in Human,Mouse,Rat.

Gene Name: proprotein convertase subtilisin/kexin type 1

Protein Name: Neuroendocrine convertase 1

---

Purification: Immunogen affinity purified.

---

## Target Details

---

Target: PCSK1

---

Alternative Name: PCSK1 ([PCSK1 Products](#))

---

Background: PCSK1(Proprotein Convertase, Subtilisin/Kexin-Type, 1), also known as PC1 or NEC1, is an enzyme that in humans is encoded by the PCSK1 gene. Proprotein convertase-1 is a neuroendocrine convertase that belongs to a family of subtilisin-like serine endoproteases that process large precursor proteins into mature bioactive products. By in situ hybridization, Seidah et al.(1991) mapped the NEC1 gene to human chromosome 5q15-q21 and mouse chromosome 13. Ohagi et al.(1996) noted that PC1 initiates the sequential processing of proinsulin to insulin by cleaving the proinsulin molecule on the C-terminal side of the dibasic peptide, arg31-arg32, joining the B-chain and C-peptide. By observing the phenotypic features in patients with PC1 mutations, Jackson et al.(2003) concluded that human intestinal absorptive function is dependent on PC1 activity.

Synonyms: BDP antibody|EC antibody|NEC 1 antibody|NEC1 antibody|NEC1\_HUMAN antibody|Neuroendocrine convertase 1 antibody|PC1 antibody|PC3 antibody|PCSK1 antibody|Prohormone convertase 1 antibody|Prohormone convertase 1/3 antibody|Prohormone convertase 3 antibody|Proprotein convertase 1 antibody|SPC3 antibody

---

UniProt: [P29120](#)

---

Pathways: [Peptide Hormone Metabolism](#)

---

## Application Details

---

Application Notes: WB: Concentration: 0.1-0.5 µg/mL, Tested Species: Human, Rat, Predicted Species: Mouse, The detection limit for PCSK1 is approximately 1 ng/lane under reducing conditions.

IHC-P: Concentration: 0.5-1 µg/mL, Tested Species: Rat, Predicted Species: Human, Mouse,

Epitope Retrieval by Heat: Boiling the paraffin sections in 10 mM citrate buffer, pH 6.0, for 20 mins is required for the staining of formalin/paraffin sections.

Notes: Tested Species: Species with positive results. Predicted Species: Species predicted to be

---

## Application Details

---

fit for the product based on sequence similarities. Other applications have not been tested.  
Optimal dilutions should be determined by end users.

Comment: Antibody can be supported by chemiluminescence kit ABIN921124 in WB, supported by ABIN921231 in IHC(P).

Restrictions: For Research Use only

## Handling

---

Format: Lyophilized

Reconstitution: Add 0.2 mL of distilled water will yield a concentration of 500 µg/mL.

Concentration: 500 µg/mL

Buffer: Each vial contains 5 mg BSA, 0.9 mg NaCl, 0.2 mg Na<sub>2</sub>HPO<sub>4</sub>, 0.05 mg Thimerosal, 0.05 mg Sodium azide.

Preservative: Thimerosal (Merthiolate), Sodium azide

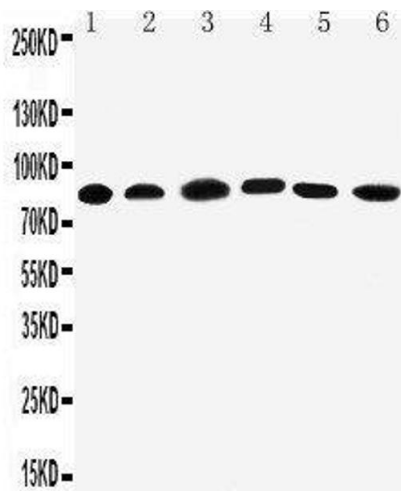
Precaution of Use: This product contains Sodium azide and Thimerosal (Merthiolate): POISONOUS AND HAZARDOUS SUBSTANCES which should be handled by trained staff only.

Handling Advice: Avoid repeated freezing and thawing.

Storage: 4 °C/-20 °C

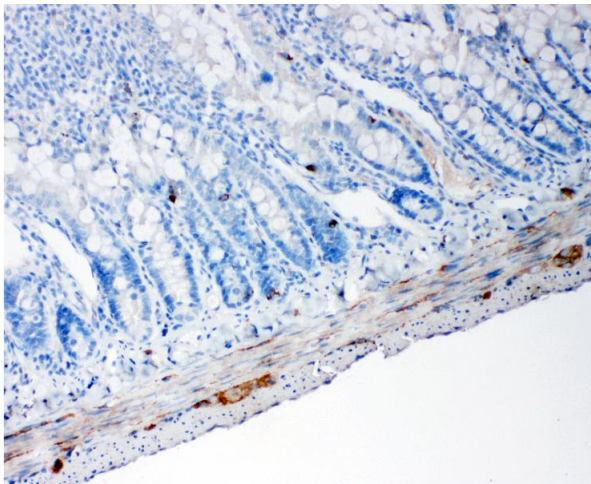
Storage Comment: At -20°C for one year. After reconstitution, at 4°C for one month.  
It can also be aliquotted and stored frozen at -20 °C for a longer time. Avoid repeated freezing and thawing.

Expiry Date: 12 months



### Western Blotting

**Image 1.** Anti-PC1/3 antibody, Western blotting Lane 1: Rat Liver Tissue Lysate Lane 2: Rat Thymus Tissue Lysate Lane 3: A549 Cell Lysate Lane 4: HELA Cell Lysate Lane 5: COLO320 Cell Lysate Lane 6: PANC Cell Lysate



### Immunohistochemistry

**Image 2.** Anti-PC1/3 antibody, IHC(P) IHC(P): Rat Intestine Tissue