

Datasheet for ABIN3044081
anti-CD1d antibody (N-Term)[Go to Product page](#)

2 Images

Overview

Quantity:	100 µg
Target:	CD1d (CD1D)
Binding Specificity:	AA 76-92, N-Term
Reactivity:	Human
Host:	Rabbit
Clonality:	Polyclonal
Conjugate:	This CD1d antibody is un-conjugated
Application:	Western Blotting (WB), Immunohistochemistry (Paraffin-embedded Sections) (IHC (p))

Product Details

Purpose:	Rabbit IgG polyclonal antibody for Antigen-presenting glycoprotein CD1d(CD1D) detection. Tested with WB, IHC-P in Human.
Immunogen:	A synthetic peptide corresponding to a sequence at the N-terminus of human CD1d(76-92aa FSDQQWETLQHIFRVYR).
Sequence:	FSDQQWETLQ HIFRVYR
Isotype:	IgG
Cross-Reactivity (Details):	No cross reactivity with other proteins.
Characteristics:	Rabbit IgG polyclonal antibody for Antigen-presenting glycoprotein CD1d(CD1D) detection. Tested with WB, IHC-P in Human. Gene Name: CD1d molecule Protein Name: Antigen-presenting glycoprotein CD1d

Product Details

Purification: Immunogen affinity purified.

Target Details

Target: CD1d (CD1D)

Alternative Name: CD1D ([CD1D Products](#))

Background: CD1D(CD1d molecule) also known as R3G1, Antigen-presenting glycoprotein CD1d, R3G1, CD1D, is the sole group-2 member of the CD1 family of major histocompatibility(MHC)-like glycoproteins. Expressed on the surface of various human antigen-presenting cells. They are related to the class I MHC molecules, and are involved in the presentation of lipid antigens to T cells. It is the only member of the group 2 CD1 Molecules. CD1d presented lipid antigens activate a special class of T cells, known as Natural Killer T(NKT) cells. When activated, NKT cells rapidly produce Th1 and Th2 cytokines, typically represented by interferon-gamma and IL-4 production. Jayawardena-Wolf et al. described 2 different pathways of Cd1d trafficking to endosomal compartments in mouse cells. A tyrosine-based motif governs recycling between the plasma membrane and the endosome, while Cd1d associates, like major histocompatibility complex class II antigens, with the invariant chain, or Ii, in the endoplasmic reticulum. Both pathways enhance antigen presentation to Cd1d-restricted natural killer T cells.

Synonyms: Antigen-presenting glycoprotein CD1d antibody|CD1.1 antibody|CD1A antibody|CD1d antibody|CD1D antigen antibody|CD1D antigen d polypeptide antibody|CD1d molecule antibody|CD1D_HUMAN antibody|Cd1d1 antibody|Differentiation antigen CD1 alpha 3 antibody|HMC class I antigen like glycoprotein CD1D antibody|Ly 38 antibody|MGC34622 antibody|IR3 antibody|IR3G1 antibody|T cell surface glycoprotein CD1d antibody|T cell surface glycoprotein CD1d precursor antibody|Thymocyte antigen CD1D antibody

UniProt: [P15813](#)

Pathways: [Regulation of Leukocyte Mediated Immunity](#), [Positive Regulation of Immune Effector Process](#)

Application Details

Application Notes: WB: Concentration: 0.1-0.5 µg/mL, Tested Species: Human, The detection limit for CD1D is approximately 2.5 ng/lane under reducing conditions.

IHC-P: Concentration: 0.5-1 µg/mL, Tested Species: Human, Epitope Retrieval by Heat: Boiling the paraffin sections in 10 mM citrate buffer, pH 6.0, for 20 mins is required for the staining of formalin/paraffin sections.

Application Details

Notes: Tested Species: Species with positive results. Predicted Species: Species predicted to be fit for the product based on sequence similarities. Other applications have not been tested.
Optimal dilutions should be determined by end users.

Comment: Antibody can be supported by chemiluminescence kit ABIN921124 in WB, supported by ABIN921231 in IHC(P).

Restrictions: For Research Use only

Handling

Format: Lyophilized

Reconstitution: Add 0.2 mL of distilled water will yield a concentration of 500 µg/mL.

Concentration: 500 µg/mL

Buffer: Each vial contains 5 mg BSA, 0.9 mg NaCl, 0.2 mg Na₂HPO₄, 0.05 mg Thimerosal, 0.05 mg Sodium azide.

Preservative: Thimerosal (Merthiolate), Sodium azide

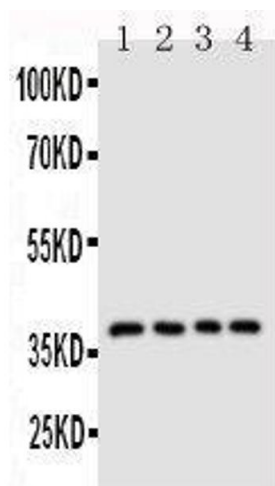
Precaution of Use: This product contains Sodium azide and Thimerosal (Merthiolate): POISONOUS AND HAZARDOUS SUBSTANCES which should be handled by trained staff only.

Handling Advice: Avoid repeated freezing and thawing.

Storage: 4 °C/-20 °C

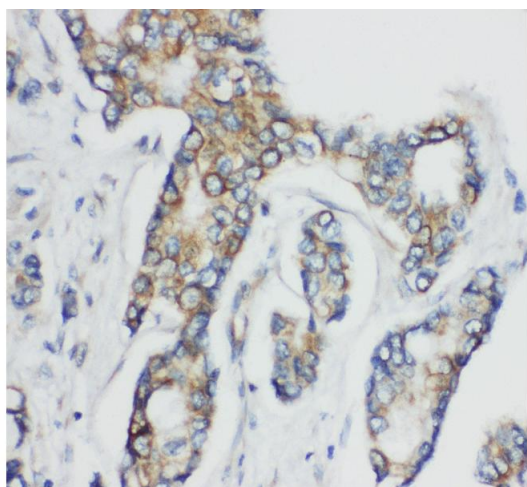
Storage Comment: At -20°C for one year. After reconstitution, at 4°C for one month.
It can also be aliquotted and stored frozen at -20 °C for a longer time. Avoid repeated freezing and thawing.

Expiry Date: 12 months



Western Blotting

Image 1. Anti-CD1d antibody, Western blotting Lane 1: COLO320 Cell Lysate Lane 2: HELA Cell Lysate Lane 3: Cell Lysate Lane 4: JURKAT Cell Lysate



Immunohistochemistry

Image 2. Anti-CD1d antibody, IHC(P) IHC(P): Human Mammary Cancer Tissue