

Datasheet for ABIN3044091

anti-Splicing Factor 1 antibody (N-Term)

4 Images

[Go to Product page](#)

Overview

Quantity:	100 µg
Target:	Splicing Factor 1 (SF1)
Binding Specificity:	AA 11-30, N-Term
Reactivity:	Human, Rat
Host:	Rabbit
Clonality:	Polyclonal
Conjugate:	This Splicing Factor 1 antibody is un-conjugated
Application:	Western Blotting (WB), Immunohistochemistry (Paraffin-embedded Sections) (IHC (p)), Immunocytochemistry (ICC), Immunohistochemistry (Frozen Sections) (IHC (fro))

Product Details

Purpose:	Rabbit IgG polyclonal antibody for Splicing factor 1(SF1) detection. Tested with WB, IHC-P, IHC-F, ICC in Human,Mouse,Rat.
Immunogen:	A synthetic peptide corresponding to a sequence at the N-terminus of human splicing factor 1(11-30aa DFPSKKRKRSRWNQDTMEQK), identical to the related rat and mouse sequences.
Sequence:	DFPSKKRKRS RWNQDTMEQK
Isotype:	IgG
Cross-Reactivity (Details):	Predicted Cross Reactivity: mouse No cross reactivity with other proteins. Predicted Cross Reactivity: Species predicted to be fit for the product based on sequence similarities.

Product Details

Characteristics:	Rabbit IgG polyclonal antibody for Splicing factor 1(SF1) detection. Tested with WB, IHC-P, IHC-F, ICC in Human,Mouse,Rat. Gene Name: splicing factor 1 Protein Name: Splicing factor 1
Purification:	Immunogen affinity purified.

Target Details

Target:	Splicing Factor 1 (SF1)
Alternative Name:	SF1 (SF1 Products)
Background:	<p>SF1(splicing factor 1), also known as zinc finger protein 162(ZFM162), ZNF162, Transcription factor ZFM1, ZFM1, D11S636, Mammalian branch point-binding protein(BBP, mBBP), Zinc finger gene in MEN1 locus, is a protein that in humans is encoded by the SF1 gene. It is predicted 623-amino acid protein. RT-PCR was used to show expression in the thyroid gland, pancreas, adrenal gland, and ovary. All of the ZNF162 isoforms contain a KH domain, a sequence motif present in proteins playing a major role in regulating cellular RNA metabolism.</p> <p>Synonyms: BBP antibody D11S636 antibody Mammalian branch point-binding protein mBBP antibody OTTHUMP00000069749 antibody OTTHUMP00000069750 antibody OTTHUMP00000069752 antibody splicing factor 1 antibody Transcription factor ZFM1 antibody ZFM1 antibody Zinc finger gene in MEN1 locus antibody Zinc finger protein 162 antibody ZNF162 antibody</p>
UniProt:	Q15637
Pathways:	Nuclear Receptor Transcription Pathway , Steroid Hormone Mediated Signaling Pathway , Ribonucleoprotein Complex Subunit Organization , Maintenance of Protein Location

Application Details

Application Notes:	WB: Concentration: 0.1-0.5 µg/mL, Tested Species: Human, Rat, Predicted Species: Mouse IHC-P: Concentration: 0.5-1 µg/mL, Tested Species: Human, Rat, Predicted Species: Mouse, Epitope Retrieval by Heat: Boiling the paraffin sections in 10 mM citrate buffer, pH 6.0, for 20 mins is required for the staining of formalin/paraffin sections. IHC-F: Concentration: 0.5-1 µg/mL, Tested Species: Rat, Predicted Species: Human, Mouse ICC: Concentration: 0.5-1 µg/mL, Tested Species: Human, Predicted Species: Mouse, Rat Notes: Tested Species: Species with positive results. Predicted Species: Species predicted to be
--------------------	----------------------------------------------------------------------------------------------------------------------------------------------------------------------------------------------------------------------------------------------------------------------------------------------------------------------------------------------------------------------------------------------------------------------------------------------------------------------------------------------------------------------------------------------------------------------------------------------------------------------------------------------

Application Details

fit for the product based on sequence similarities. Other applications have not been tested.
Optimal dilutions should be determined by end users.

Comment: Antibody can be supported by chemiluminescence kit ABIN921124 in WB, supported by ABIN921231 in IHC(P), IHC(F) and ICC.

Restrictions: For Research Use only

Handling

Format: Lyophilized

Reconstitution: Add 0.2 mL of distilled water will yield a concentration of 500 µg/mL.

Concentration: 500 µg/mL

Buffer: Each vial contains 5 mg BSA, 0.9 mg NaCl, 0.2 mg Na₂HPO₄, 0.05 mg Thimerosal, 0.05 mg Sodium azide.

Preservative: Thimerosal (Merthiolate), Sodium azide

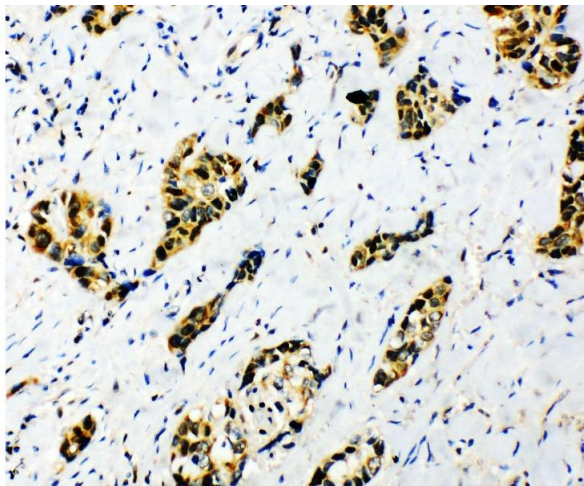
Precaution of Use: This product contains Sodium azide and Thimerosal (Merthiolate): POISONOUS AND HAZARDOUS SUBSTANCES which should be handled by trained staff only.

Handling Advice: Avoid repeated freezing and thawing.

Storage: 4 °C/-20 °C

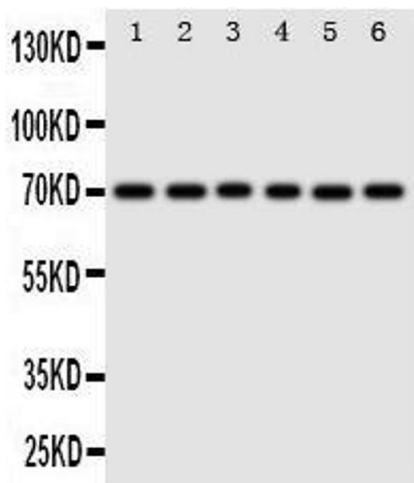
Storage Comment: At -20°C for one year. After reconstitution, at 4°C for one month.
It can also be aliquotted and stored frozen at -20 °C for a longer time. Avoid repeated freezing and thawing.

Expiry Date: 12 months



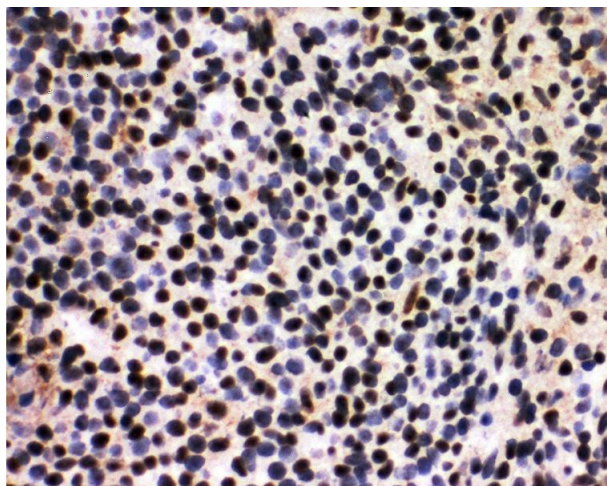
Immunohistochemistry

Image 1. Anti-splicing factor 1 antibody, IHC(P) IHC(P):
Human Lung Cancer Tissue



Western Blotting

Image 2.



Immunohistochemistry

Image 3. Anti-splicing factor 1 antibody, IHC(F) IHC(F): Rat
Spleen Tissue

Please check the [product details page](#) for more images. Overall 4 images are available for ABIN3044091.