

Datasheet for ABIN3044118
anti-CYP2E1 antibody (N-Term)



[Go to Product page](#)

2 Images

3 Publications

Overview

Quantity:	100 µg
Target:	CYP2E1
Binding Specificity:	AA 94-112, N-Term
Reactivity:	Mouse, Rat
Host:	Rabbit
Clonality:	Polyclonal
Conjugate:	This CYP2E1 antibody is un-conjugated
Application:	Western Blotting (WB), Immunohistochemistry (Paraffin-embedded Sections) (IHC (p))

Product Details

Purpose:	Rabbit IgG polyclonal antibody for Cytochrome P450 2E1(CYP2E1) detection. Tested with WB, IHC-P in Mouse,Rat.
Immunogen:	A synthetic peptide corresponding to a sequence at the N-terminus of mouse CYP2E1(94-112aa KNEFSGRGDIPVFQEYKNK), identical to the related rat sequence.
Sequence:	KNEFSGRGDI PVFQEYKNK
Isotype:	IgG
Cross-Reactivity (Details):	No cross reactivity with other proteins.
Characteristics:	Rabbit IgG polyclonal antibody for Cytochrome P450 2E1(CYP2E1) detection. Tested with WB, IHC-P in Mouse,Rat. Gene Name: cytochrome P450, family 2, subfamily E, polypeptide 1 Protein Name: Cytochrome P450 2E1

Product Details

Purification: Immunogen affinity purified.

Target Details

Target: CYP2E1

Alternative Name: CYP2E1 ([CYP2E1 Products](#))

Background: CYP2E1, also known as P450IIE1, is a member of the P450IIE subfamily which is ethanol-inducible. It has at least 1 gene which is mapped to 10q24.3-qter, and a second is likely in rat and in man. Both the rat and human proteins encoded by this gene contain 493 amino acids and calculated molecular masses of 56,634 and 56,916 daltons, respectively. In addition, genetic polymorphisms in the 5-prime flanking region of the human P450IIE1 gene affected its binding of transacting factor and changed its transcriptional regulation, which may lead to interindividual differences of microsomal drug oxidation activity. P450IIE1 is an important enzyme for the catalysis of the conversion of ethanol to acetaldehyde and to acetate in humans, and it is also involved in the metabolism of nitrosamines. Due to the possible correlation of P450IIE1 genes with malignancy, clinical studies of RFLP patterns of these genes in cancer may be useful.

Synonyms: 4-nitrophenol 2-hydroxylase antibody|CP2E1_HUMAN antibody|CPE 1 antibody|CPE1 antibody|CYP2E antibody|CYP2E1 antibody|CYP1IE1 antibody|Cytochrome P450 2E1 antibody|Cytochrome P450 family 2 subfamily E polypeptide 1 antibody|Cytochrome P450 isozyme 3A antibody|Cytochrome P450 LM3A antibody|Cytochrome P450 subfamily IIE(ethanol inducible) polypeptide 1 antibody|Cytochrome P450 subfamily IIE polypeptide 1 antibody|Cytochrome P450, family 2, subfamily e, polypeptide 1 antibody|cytochrome P450, subfamily IIE(ethanol-inducible), polypeptide 1 antibody|Cytochrome P450, subfamily IIE antibody|Cytochrome P450-ALC antibody|Cytochrome P450-J antibody|Cytochrome P450RLM6 antibody|EC 1.14.13.- antibody|EC 1.14.13.n7 antibody|Ethanol-inducible P450 antibody|Flavoprotein linked monooxygenase antibody|Flavoprotein-linked monooxygenase antibody|MGC133529 antibody|Microsomal monooxygenase antibody|OTTHUMP00000020813 antibody|OTTHUMP00000046571 antibody|P450 ALC antibody|p450 antibody|P450 J antibody|P450-J antibody|P450C2E antibody|P450J antibody|P450RLM6 antibody|Xenobiotic monooxygenase antibody

UniProt: [Q05421](#)

Application Details

Application Notes:	WB: Concentration: 0.1-0.5 µg/mL, Tested Species: Mouse, Rat, The detection limit for CYP2E1 is approximately 1 ng/lane under reducing conditions. IHC-P: Concentration: 0.5-1 µg/mL, Tested Species: Mouse, Rat, Epitope Retrieval by Heat: Boiling the paraffin sections in 10 mM citrate buffer, pH 6.0, for 20 mins is required for the staining of formalin/paraffin sections. Notes: Tested Species: Species with positive results. Predicted Species: Species predicted to be fit for the product based on sequence similarities. Other applications have not been tested. Optimal dilutions should be determined by end users.
Comment:	Antibody can be supported by chemiluminescence kit ABIN921124 in WB, supported by ABIN921231 in IHC(P).
Restrictions:	For Research Use only

Handling

Format:	Lyophilized
Reconstitution:	Add 0.2 mL of distilled water will yield a concentration of 500 µg/mL.
Concentration:	500 µg/mL
Buffer:	Each vial contains 5 mg BSA, 0.9 mg NaCl, 0.2 mg Na ₂ HPO ₄ , 0.05 mg Thimerosal, 0.05 mg Sodium azide.
Preservative:	Thimerosal (Merthiolate), Sodium azide
Precaution of Use:	This product contains Sodium azide and Thimerosal (Merthiolate): POISONOUS AND HAZARDOUS SUBSTANCES which should be handled by trained staff only.
Handling Advice:	Avoid repeated freezing and thawing.
Storage:	4 °C/-20 °C
Storage Comment:	At -20°C for one year. After reconstitution, at 4°C for one month. It can also be aliquotted and stored frozen at -20 °C for a longer time. Avoid repeated freezing and thawing.
Expiry Date:	12 months

Publications

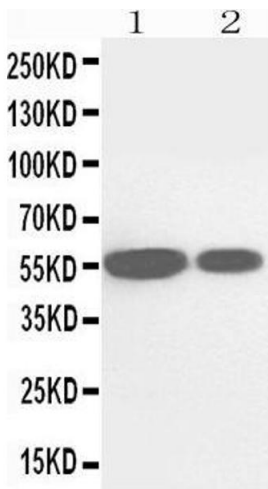
Product cited in:	Fan, Jiang, Wang, Tan, Zeng, Wang, Chen, Qu, Gonzalez, Huang, Bi: "Wuzhi tablet (Schisandra Sphenanthera extract) protects against acetaminophen-induced hepatotoxicity by inhibition of
-------------------	--

CYP-mediated bioactivation and regulation of NRF2-ARE and p53/p21 pathways." in: **Drug metabolism and disposition: the biological fate of chemicals**, Vol. 42, Issue 12, pp. 1982-90, (2014) ([PubMed](#)).

Jiang, Fan, Wang, Chen, Zeng, Tan, Gonzalez, Huang, Bi: "Schisandrol B protects against acetaminophen-induced hepatotoxicity by inhibition of CYP-mediated bioactivation and regulation of liver regeneration." in: **Toxicological sciences : an official journal of the Society of Toxicology**, Vol. 143, Issue 1, pp. 107-15, (2014) ([PubMed](#)).

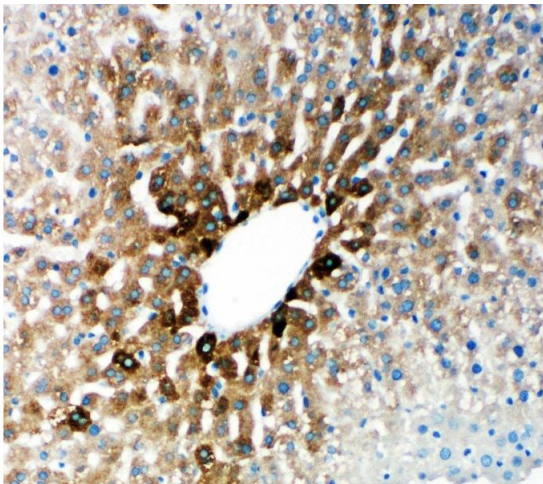
Chen, Sun, Han, Peng, Li, Liu, Lv, Liu, Zhou, Sun: "Protective effect of tea polyphenols against paracetamol-induced hepatotoxicity in mice is significantly correlated with cytochrome P450 suppression." in: **World journal of gastroenterology**, Vol. 15, Issue 15, pp. 1829-35, (2009) ([PubMed](#)).

Images



Western Blotting

Image 1. Anti-Cytochrome P450 2E1 antibody, Western blotting Lane 1: Rat Liver Tissue Lysate Lane 2: Mouse Liver Tissue Lysate



Immunohistochemistry

Image 2. Anti-Cytochrome P450 2E1 antibody, IHC(P)
IHC(P): Rat Liver Tissue