

Datasheet for ABIN3044119
anti-DCC antibody (N-Term)

2 Images

[Go to Product page](#)

Overview

Quantity:	100 µg
Target:	DCC
Binding Specificity:	AA 162-178, N-Term
Reactivity:	Human, Mouse, Rat
Host:	Rabbit
Clonality:	Polyclonal
Conjugate:	This DCC antibody is un-conjugated
Application:	Western Blotting (WB), Immunohistochemistry (Paraffin-embedded Sections) (IHC (p))

Product Details

Purpose:	Rabbit IgG polyclonal antibody for Netrin receptor DCC(DCC) detection. Tested with WB, IHC-P in Human,Mouse,Rat.
Immunogen:	A synthetic peptide corresponding to a sequence at the N-terminus of human DCC(162-178aa EVIGEPMP TIHWQKNQQ), identical to the related mouse sequence, and different from the related rat sequence by one amino acid.
Sequence:	EVIGEPMP TI HWQKNQQ
Isotype:	IgG
Cross-Reactivity (Details):	No cross reactivity with other proteins.
Characteristics:	Rabbit IgG polyclonal antibody for Netrin receptor DCC(DCC) detection. Tested with WB, IHC-P in Human,Mouse,Rat. Gene Name: deleted in colorectal carcinoma

Product Details

Protein Name: Netrin receptor DCC

Purification: Immunogen affinity purified.

Target Details

Target: DCC

Alternative Name: DCC ([DCC Products](#))

Background: DCC(Deleted IN Colorectal Carcinoma) also known as CRC18 or CRCR1. The DCC gene encodes a functional receptor for netrin and mediates axon outgrowth and the steering response. Heterozygous loss-of-function mutations in DCC can result in congenital mirror movements. Alterations in DCC occur frequently in colorectal cancer. Studying a YAC contig containing the entire DCC coding region, they showed that the DCC gene spans approximately 1.4 Mb. Vogelstein(1995) stated that the precise location of the DCC gene was thought to be 18q21.3. DCC is a receptor or a component of a receptor that mediates the effects of netrin-1 on commissural axons, and they complement genetic evidence for interactions between DCC and netrin homologs in C. DCC protein could be detected in varying abundance in all specimens of normal colonic mucosa analyzed as well as in all specimens of adenomatous polyps, colorectal carcinoma and colorectal liver metastases. DCC may function as a tumor-suppressor protein by inducing apoptosis in settings in which ligand is unavailable(for example, during metastasis or tumor growth beyond local blood supply) through functional caspase cascades by a mechanism that requires cleavage of DCC at asp1290. Stein et al.(2001) concluded that DCC plays a central role in netrin signaling of axon growth and guidance independent of A2B receptor activation.

Synonyms: Colorectal cancer related chromosome sequence 18 antibody|Colorectal cancer suppressor antibody|CRC 18 antibody|CRC18 antibody|CRCR 1 antibody|CRCR1 antibody|DCC antibody|DCC_HUMAN antibody|Deleted in colorectal cancer protein antibody|Deleted in colorectal carcinoma antibody|Immunoglobulin superfamily DCC subclass member 1 antibody|Netrin receptor DCC antibody|Tumor suppressor protein DCC antibody

UniProt: [P43146](#)

Pathways: [Regulation of Cell Size](#)

Application Details

Application Notes: WB: Concentration: 0.1-0.5 µg/mL, Tested Species: Human, Mouse, Rat

Application Details

IHC-P: Concentration: 0.5-1 µg/mL, Tested Species: Human, Predicted Species: Mouse, Rat,
Epitope Retrieval by Heat: Boiling the paraffin sections in 10 mM citrate buffer, pH 6.0, for
20 mins is required for the staining of formalin/paraffin sections.

Notes: Tested Species: Species with positive results. Predicted Species: Species predicted to be
fit for the product based on sequence similarities. Other applications have not been tested.

Optimal dilutions should be determined by end users.

Comment: Antibody can be supported by chemiluminescence kit ABIN921124 in WB, supported by
ABIN921231 in IHC(P).

Restrictions: For Research Use only

Handling

Format: Lyophilized

Reconstitution: Add 0.2 mL of distilled water will yield a concentration of 500 µg/mL.

Concentration: 500 µg/mL

Buffer: Each vial contains 5 mg BSA, 0.9 mg NaCl, 0.2 mg Na₂HPO₄, 0.05 mg Thimerosal, 0.05 mg
Sodium azide.

Preservative: Thimerosal (Merthiolate), Sodium azide

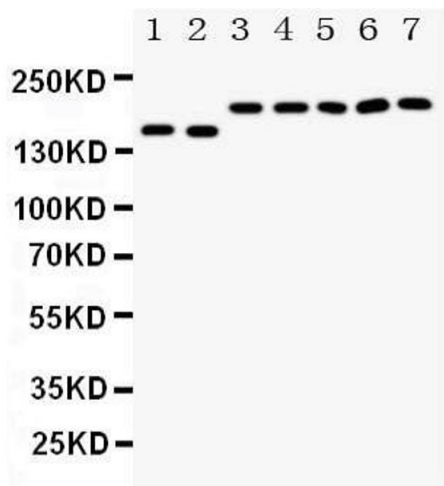
Precaution of Use: This product contains Sodium azide and Thimerosal (Merthiolate): POISONOUS AND
HAZARDOUS SUBSTANCES which should be handled by trained staff only.

Handling Advice: Avoid repeated freezing and thawing.

Storage: 4 °C/-20 °C

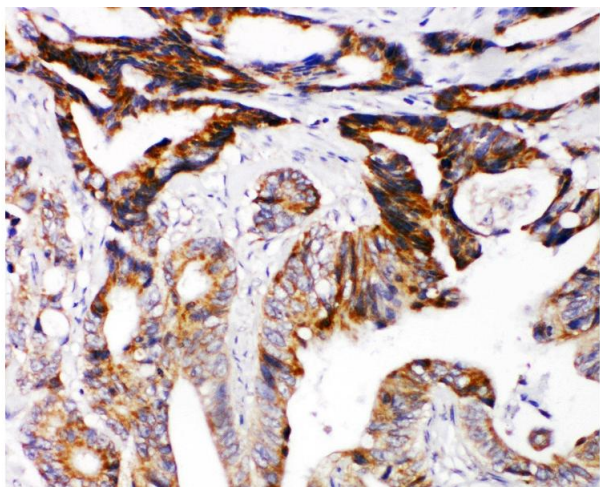
Storage Comment: At -20°C for one year. After reconstitution, at 4°C for one month.
It can also be aliquotted and stored frozen at -20 °C for a longer time. Avoid repeated freezing
and thawing.

Expiry Date: 12 months



Western Blotting

Image 1. Anti-DCC antibody, Western blotting Lane 1: Rat Brain Tissue Lysate Lane 2: Mouse Brain Tissue Lysate Lane 3: U87 Cell Lysate Lane 4: SW620 Cell Lysate Lane 5: COLO320 Cell Lysate Lane 6: 293T Cell Lysate Lane 7: HELA Cell Lysate



Immunohistochemistry

Image 2. Anti-DCC antibody, IHC(P) IHC(P): Human Intestinal Cancer Tissue