

Datasheet for ABIN3044153
anti-DCI antibody (C-Term)



[Go to Product page](#)

4 Images

Overview

Quantity:	100 µg
Target:	DCI (EC11)
Binding Specificity:	AA 272-290, C-Term
Reactivity:	Human, Rat
Host:	Rabbit
Clonality:	Polyclonal
Conjugate:	This DCI antibody is un-conjugated
Application:	Western Blotting (WB), Immunohistochemistry (Paraffin-embedded Sections) (IHC (p)), Immunocytochemistry (ICC)

Product Details

Purpose:	Rabbit IgG polyclonal antibody for Enoyl-CoA delta isomerase 1, mitochondrial(EC11) detection. Tested with WB, IHC-P, ICC in Human,Mouse,Rat.
Immunogen:	A synthetic peptide corresponding to a sequence at the C-terminus of human DCI(272-290aa ADVQNFVSFISKDSIQKSL), different from the related mouse sequence by two amino acids and from the related rat sequence by three amino acids.
Sequence:	ADVQNFVSFI SKDSIQKSL
Isotype:	IgG
Cross-Reactivity (Details):	Predicted Cross Reactivity: mouse No cross reactivity with other proteins. Predicted Cross Reactivity: Species predicted to be fit for the product based on sequence

Product Details

	similarities.
Characteristics:	Rabbit IgG polyclonal antibody for Enoyl-CoA delta isomerase 1, mitochondrial(ECI1) detection. Tested with WB, IHC-P, ICC in Human,Mouse,Rat. Gene Name: enoyl-CoA delta isomerase 1 Protein Name: Enoyl-CoA delta isomerase 1, mitochondrial
Purification:	Immunogen affinity purified.

Target Details

Target:	DCI (ECI1)
Alternative Name:	ECI1 (ECI1 Products)
Background:	<p>ECI1/DCI(Dodecenoyl-CoA Delta Isomerase), also known as 3,2-trans-enoyl-CoA isomerase, is an enzyme that catalyzes the conversion of cis-or trans-double bonds of fatty acids at gamma-carbon(position 3) to trans double bonds at beta-carbon(position 2). It plays a particularly important role in the metabolism of unsaturated fatty acids. All classes of enoyl-CoA isomerases belong to a family of enzymes, the hydratase/isomerase or crotonase superfamily, and when examined with x-ray crystallography, exhibit a common structural feature of the family, the N-terminal core with a spiral fold composed of four turns, each turn consisting of two beta-sheets and one alpha-helix. Dodecenoyl-CoA Delta Isomerase is involved in the beta-oxidation, one of the most frequently used pathways in fatty acid degradation, of unsaturated fatty acids with double bonds at odd-numbered carbon positions. It does so by shifting the position of the double bonds in the acyl-CoA intermediates and converting 3-cis or trans-enoyl-CoA to 2-trans-enoyl-CoA.</p> <p>Synonyms: 3,2 trans enoyl Coenzyme A isomerase antibody Acetylene allene isomerase antibody D3,D2 enoyl CoA isomerase antibody DCI antibody DCI protein antibody Delta(3),Delta(2) enoyl CoA isomerase antibody Delta3, delta2 enoyl CoA isomerase antibody Dodecenoyl CoA delta Isomerase antibody Dodecenoyl CoA isomerase antibody Dodecenoyl Coenzyme A delta isomerase antibody Dodecenoyl Coenzyme A delta isomerase(3,2 trans enoyl Coenzyme A isomerase) antibody Dodecenoyl Coenzyme A delta isomerase 3,2 trans enoyl Coenzyme A isomerase, isoform CRA a antibody</p>

UniProt: [P42126](#)

Application Details

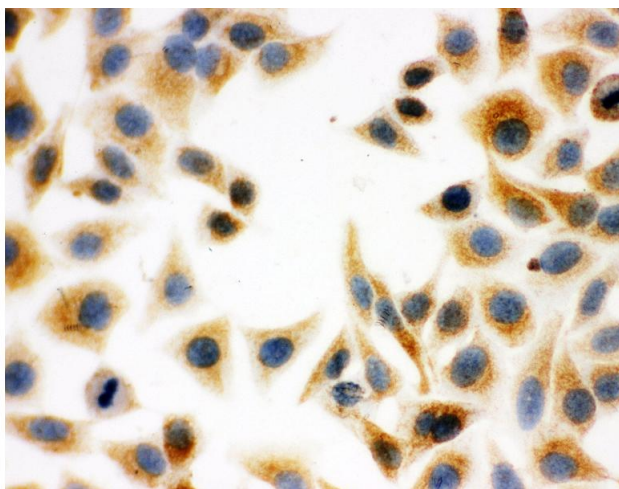
Application Notes:	WB: Concentration: 0.1-0.5 µg/mL, Tested Species: Human, Rat, Predicted Species: Mouse IHC-P: Concentration: 0.5-1 µg/mL, Tested Species: Human, Epitope Retrieval by Heat: Boiling the paraffin sections in 10 mM citrate buffer, pH 6.0, for 20 mins is required for the staining of formalin/paraffin sections. ICC: Concentration: 0.5-1 µg/mL, Tested Species: Human Notes: Tested Species: Species with positive results. Predicted Species: Species predicted to be fit for the product based on sequence similarities. Other applications have not been tested. Optimal dilutions should be determined by end users.
--------------------	--

Comment:	Antibody can be supported by chemiluminescence kit ABIN921124 in WB, supported by ABIN921231 in IHC(P) and ICC.
----------	---

Restrictions:	For Research Use only
---------------	-----------------------

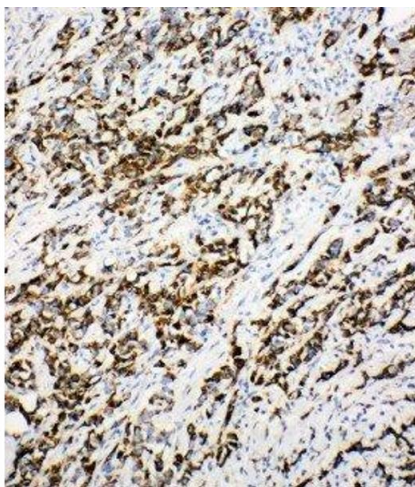
Handling

Format:	Lyophilized
Reconstitution:	Add 0.2 mL of distilled water will yield a concentration of 500 µg/mL.
Concentration:	500 µg/mL
Buffer:	Each vial contains 5 mg BSA, 0.9 mg NaCl, 0.2 mg Na ₂ HPO ₄ , 0.05 mg Thimerosal, 0.05 mg Sodium azide.
Preservative:	Thimerosal (Merthiolate), Sodium azide
Precaution of Use:	This product contains Sodium azide and Thimerosal (Merthiolate): POISONOUS AND HAZARDOUS SUBSTANCES which should be handled by trained staff only.
Handling Advice:	Avoid repeated freezing and thawing.
Storage:	4 °C/-20 °C
Storage Comment:	At -20°C for one year. After reconstitution, at 4°C for one month. It can also be aliquotted and stored frozen at -20 °C for a longer time. Avoid repeated freezing and thawing.
Expiry Date:	12 months



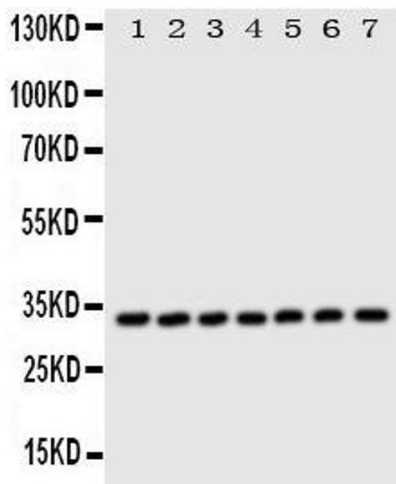
Immunohistochemistry

Image 1. Anti-DCI antibody, ICC ICC: HELA Cell



Immunohistochemistry

Image 2. Anti-DCI antibody, IHC(P) IHC(P): Human Mammary Cancer Tissue



Western Blotting

Image 3.

Please check the [product details page](#) for more images. Overall 4 images are available for ABIN3044153.