

Datasheet for ABIN3044157
anti-Kallikrein 6 antibody (C-Term)

3 Images

[Go to Product page](#)

Overview

Quantity:	100 µg
Target:	Kallikrein 6 (KLK6)
Binding Specificity:	AA 227-244, C-Term
Reactivity:	Human
Host:	Rabbit
Clonality:	Polyclonal
Conjugate:	This Kallikrein 6 antibody is un-conjugated
Application:	Western Blotting (WB), Immunohistochemistry (Paraffin-embedded Sections) (IHC (p)), Immunocytochemistry (ICC)

Product Details

Purpose:	Rabbit IgG polyclonal antibody for Kallikrein-6(KLK6) detection. Tested with WB, IHC-P, ICC in Human.
Immunogen:	A synthetic peptide corresponding to a sequence at the C-terminus of human Kallikrein 6(227-244aa YTNVCRYTNWIQKTIQAK).
Sequence:	YTNVCRYTNW IQKTIQAK
Isotype:	IgG
Cross-Reactivity (Details):	No cross reactivity with other proteins.
Characteristics:	Rabbit IgG polyclonal antibody for Kallikrein-6(KLK6) detection. Tested with WB, IHC-P, ICC in Human. Gene Name: kallikrein-related peptidase 6

Product Details

Protein Name: Kallikrein-6

Purification: Immunogen affinity purified.

Target Details

Target: Kallikrein 6 (KLK6)

Alternative Name: KLK6 ([KLK6 Products](#))

Background: KLK6(Kallikrein-related peptidase 6), also called KALLIKREIN 6, NEUROSIN, PROTEASE M, ZYME or PRSS9, is a protein that in humans is encoded by the KLK6 gene. This gene is one of the fifteen kallikrein subfamily members located in a cluster on chromosome 19. The encoded enzyme is regulated by steroid hormones. Northern blot analysis revealed that the PRSS9 mRNA was expressed in several primary tumors and cell lines from mammary, prostate, and ovarian cancers, but was not detected in any metastases of these cancers. The KLK6 gene is mapped on 19q13.41. In tissue culture, the enzyme has been found to generate amyloidogenic fragments from the amyloid precursor protein, suggesting a potential for involvement in Alzheimer's disease. Upon cellular stress, neurosin was released from mitochondria to the cytosol, which resulted in the increase of degraded alpha-synuclein species. Neurosin may play a significant role in physiologic alpha-synuclein degradation and also in the pathogenesis of synucleinopathies.

Synonyms: Bssp antibody|hK 6 antibody|hK6 antibody|Kallikrein 6 precursor antibody|Kallikrein related peptidase 6 antibody|Kallikrein-6 antibody|Kallikrein6 antibody|KLK 6 antibody|Klk 7 antibody|KLK 9 antibody|Klk29 antibody|Klk6 antibody|KLK6_HUMAN antibody|Klk7 antibody|KLK9 antibody|MGC9355 antibody|mGK 1 antibody|mGK1 antibody|MSP antibody|Neurosin antibody|Protease M antibody|Protease serine 18 antibody|Protease serine 9 antibody|PRSS 18 antibody|PRSS 9 antibody|PRSS18 antibody|PRSS9 antibody|Serine protease 18 antibody|Serine protease 9 antibody|SP 59 antibody|SP59 antibody|Tissue kallikrein antibody|TK antibody|Zyme antibody

UniProt: [Q92876](#)

Pathways: [Complement System](#), [Regulation of G-Protein Coupled Receptor Protein Signaling](#)

Application Details

Application Notes: WB: Concentration: 0.1-0.5 µg/mL, Tested Species: Human

IHC-P: Concentration: 0.5-1 µg/mL, Tested Species: Human, Epitope Retrieval by Heat: Boiling

Application Details

the paraffin sections in 10 mM citrate buffer, pH 6.0, for 20 mins is required for the staining of formalin/paraffin sections.

ICC: Concentration: 0.5-1 µg/mL, Tested Species: Human

Notes: Tested Species: Species with positive results. Predicted Species: Species predicted to be fit for the product based on sequence similarities. Other applications have not been tested.

Optimal dilutions should be determined by end users.

Comment: Antibody can be supported by chemiluminescence kit ABIN921124 in WB, supported by ABIN921231 in IHC(P) and ICC.

Restrictions: For Research Use only

Handling

Format: Lyophilized

Reconstitution: Add 0.2 mL of distilled water will yield a concentration of 500 µg/mL.

Concentration: 500 µg/mL

Buffer: Each vial contains 5 mg BSA, 0.9 mg NaCl, 0.2 mg Na₂HPO₄, 0.05 mg Thimerosal, 0.05 mg Sodium azide.

Preservative: Thimerosal (Merthiolate), Sodium azide

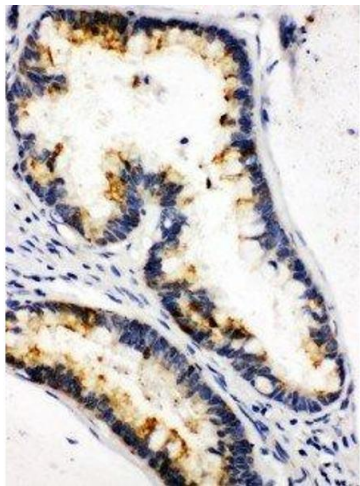
Precaution of Use: This product contains Sodium azide and Thimerosal (Merthiolate): POISONOUS AND HAZARDOUS SUBSTANCES which should be handled by trained staff only.

Handling Advice: Avoid repeated freezing and thawing.

Storage: 4 °C/-20 °C

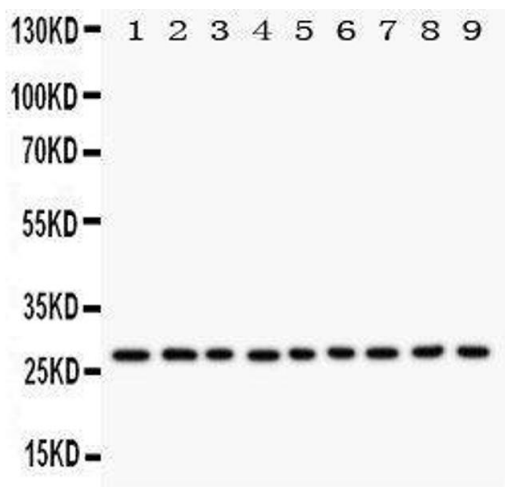
Storage Comment: At -20°C for one year. After reconstitution, at 4°C for one month.
It can also be aliquotted and stored frozen at -20 °C for a longer time. Avoid repeated freezing and thawing.

Expiry Date: 12 months



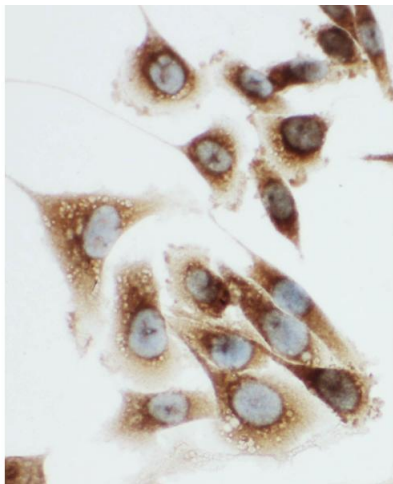
Immunohistochemistry

Image 1. Anti-Kallikrein 6 antibody, IHC(P) IHC(P): Human Intestinal Cancer Tissue



Western Blotting

Image 2.



Immunohistochemistry

Image 3. Anti-Kallikrein 6 antibody, ICC ICC: PC-3 Cell