

Datasheet for ABIN3044159
anti-MCM6 antibody (Middle Region)

5 Images

[Go to Product page](#)

Overview

Quantity:	100 µg
Target:	MCM6
Binding Specificity:	AA 589-605, Middle Region
Reactivity:	Human, Mouse, Rat
Host:	Rabbit
Clonality:	Polyclonal
Application:	Western Blotting (WB), Immunohistochemistry (Paraffin-embedded Sections) (IHC (p)), Immunocytochemistry (ICC), Immunohistochemistry (Frozen Sections) (IHC (fro))

Product Details

Purpose:	Rabbit IgG polyclonal antibody for DNA replication licensing factor MCM6(MCM6) detection. Tested with WB, IHC-P, IHC-F, ICC in Human,Mouse,Rat.
Immunogen:	A synthetic peptide corresponding to a sequence in the middle region of human MCM6(589-605aa ESEDFIVEQYKHLRQRD), different from the related rat and mouse sequences by one amino acid.
Sequence:	ESEDFIVEQY KHLRQRD
Isotype:	IgG
Cross-Reactivity (Details):	No cross reactivity with other proteins.
Characteristics:	Rabbit IgG polyclonal antibody for DNA replication licensing factor MCM6(MCM6) detection. Tested with WB, IHC-P, IHC-F, ICC in Human,Mouse,Rat. Gene Name: minichromosome maintenance complex component 6

Product Details

Protein Name: DNA replication licensing factor MCM6

Purification: Immunogen affinity purified.

Target Details

Target: MCM6

Alternative Name: MCM6 ([MCM6 Products](#))

Background: MCM6(Minichromosome maintenance, s. pombe, homolog of, 6) is a protein that in humans is encoded by the MCM6 gene. MCM6 is one of the highly conserved mini-chromosome maintenance proteins(MCM) that are essential for the initiation of eukaryotic genome replication. The MCM genes were originally identified in yeast defective in minichromosome maintenance and have since been shown to play roles in the progression of the cell cycle, many are cell division control genes. The MCM6 gene is mapped on 2q21.3. Mcm 6 has recently been shown to interact strongly Cdt1 at defined residues, by mutating these target residues Wei et al. observed lack of Cdt1 recruitment of Mcm2-7 to the pre-RC. An approximately 200-kb region surrounding the C/T(-13910) polymorphism in MCM6 intron 13 functioned as an enhancer of the lactase gene promoter in intestinal cell culture.

Synonyms: DNA replication licensing factor MCM6 antibody|MCG40308 antibody|Mcm6 antibody|MCM6 minichromosome maintenance deficient 6(MIS5 homolog, S. pombe) antibody|MCM6 minichromosome maintenance deficient 6 antibody|MCM6_HUMAN antibody|Minichromosome maintenance complex component 6 antibody|Minichromosome maintenance deficient(mis5 S. pombe) 6 antibody|Minichromosome maintenance deficient 6 homolog antibody|Minichromosome maintenance protein 6 antibody|Mis5 antibody|MIS5 homolog antibody|p105MCM antibody

UniProt: [Q14566](#)

Pathways: [DNA Damage Repair](#), [Mitotic G1-G1/S Phases](#), [DNA Replication](#), [Synthesis of DNA](#)

Application Details

Application Notes: WB: Concentration: 0.1-0.5 µg/mL, Tested Species: Human, Mouse, Rat
IHC-P: Concentration: 0.5-1 µg/mL, Tested Species: Human, Rat, Predicted Species: Mouse, Epitope Retrieval by Heat: Boiling the paraffin sections in 10 mM citrate buffer, pH 6.0, for 20 mins is required for the staining of formalin/paraffin sections.
IHC-F: Concentration: 0.5-1 µg/mL, Tested Species: Human, Rat, Predicted Species: Mouse

Application Details

ICC: Concentration: 0.5-1 µg/mL, Tested Species: Human, Predicted Species: Mouse, Rat
Notes: Tested Species: Species with positive results. Predicted Species: Species predicted to be fit for the product based on sequence similarities. Other applications have not been tested.
Optimal dilutions should be determined by end users.

Comment: Antibody can be supported by chemiluminescence kit ABIN921124 in WB, supported by ABIN921231 in IHC(P), IHC(F) and ICC.

Restrictions: For Research Use only

Handling

Format: Lyophilized

Reconstitution: Add 0.2 mL of distilled water will yield a concentration of 500 µg/mL.

Concentration: 500 µg/mL

Buffer: Each vial contains 5 mg BSA, 0.9 mg NaCl, 0.2 mg Na₂HPO₄, 0.05 mg Thimerosal, 0.05 mg Sodium azide.

Preservative: Thimerosal (Merthiolate), Sodium azide

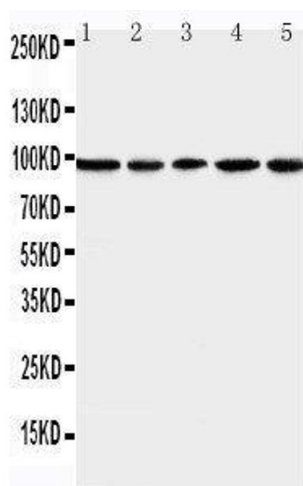
Precaution of Use: This product contains Sodium azide and Thimerosal (Merthiolate): POISONOUS AND HAZARDOUS SUBSTANCES which should be handled by trained staff only.

Handling Advice: Avoid repeated freezing and thawing.

Storage: 4 °C/-20 °C

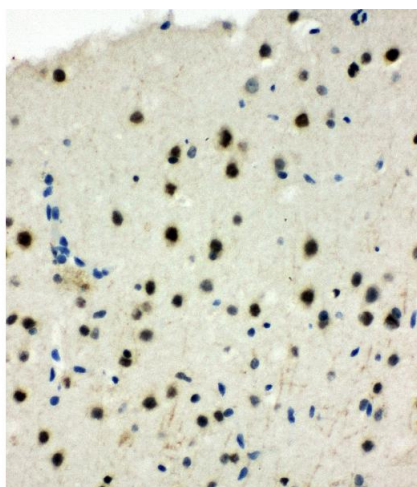
Storage Comment: At -20°C for one year. After reconstitution, at 4°C for one month.
It can also be aliquotted and stored frozen at -20 °C for a longer time. Avoid repeated freezing and thawing.

Expiry Date: 12 months



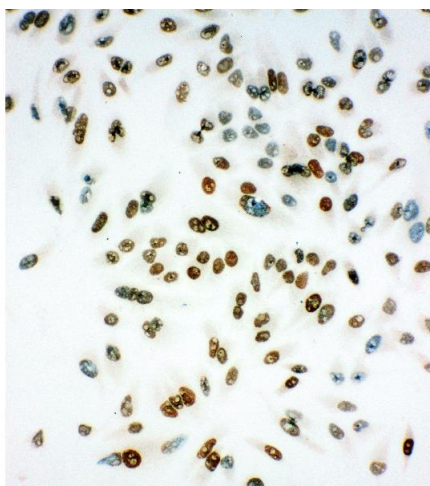
Western Blotting

Image 1. Anti-MCM6 antibody, Western blotting Lane 1: U87 Cell Lysate Lane 2: COLO320 Cell Lysate Lane 3: HELA Cell Lysate Lane 4: MCF-7 Cell Lysate Lane 5: JURKAT Cell Lysate



Immunohistochemistry

Image 2. Anti-MCM6 antibody, IHC(P) IHC(P): Rat Brain Tissue



Immunohistochemistry

Image 3. Anti-MCM6 antibody, ICC ICC: HELA Cell

Please check the [product details page](#) for more images. Overall 5 images are available for ABIN3044159.