

Datasheet for ABIN3044163
anti-SNAP23 antibody (C-Term)



[Go to Product page](#)

5 Images

Overview

Quantity:	100 µg
Target:	SNAP23
Binding Specificity:	AA 192-211, C-Term
Reactivity:	Human, Mouse, Rat
Host:	Rabbit
Clonality:	Polyclonal
Application:	Western Blotting (WB), Immunohistochemistry (Paraffin-embedded Sections) (IHC (p)), Immunocytochemistry (ICC), Immunohistochemistry (Frozen Sections) (IHC (fro))

Product Details

Purpose:	Rabbit IgG polyclonal antibody for Synaptosomal-associated protein 23(SNAP23) detection. Tested with WB, IHC-P, IHC-F, ICC in Human,Mouse,Rat.
Immunogen:	A synthetic peptide corresponding to a sequence at the C-terminus of human SNAP23(192-211aa DTNRDRIDIANARAKKLIDS), different from the related rat and mouse sequences by three amino acids.
Sequence:	DTNRDRIDIA NARAKKLIDS
Isotype:	IgG
Cross-Reactivity (Details):	No cross reactivity with other proteins.
Characteristics:	Rabbit IgG polyclonal antibody for Synaptosomal-associated protein 23(SNAP23) detection. Tested with WB, IHC-P, IHC-F, ICC in Human,Mouse,Rat. Gene Name: synaptosomal-associated protein, 23 kDa

Product Details

Protein Name: Synaptosomal-associated protein 23(SNAP-23)

Purification: Immunogen affinity purified.

Target Details

Target: SNAP23

Alternative Name: SNAP23 ([SNAP23 Products](#))

Background: SNAP23(Synaptosomal-Associated Protein, 23-KD), also called SNAP23A, is a protein that in humans is encoded by the SNAP23 gene. The SNAP23 gene has 8 exons, with the initiation codon located in exon 2. The SNAP23 gene is mapped on 15q15.1-q15.2. The SNAP23 cDNA encodes a 211-amino acid polypeptide with a predicted mass of 23 kD. Its amino acid sequence is 59 % identical to that of SNAP25. Northern blot analysis revealed that SNAP23 is ubiquitously expressed. SNAP23 is able to bind to multiple syntaxins as well as to multiple vesicle-associated membrane proteins. After relocation, SNAP23 is required for exocytosis, implying a crucial role in promoting membrane fusion. TIVAMP-containing vesicles were concentrated in the apical domain of epithelial cells. STX3A and SNAP23 were codistributed at the apical plasma membrane, where they formed N-ethyl maleimide-dependent SNARE complexes with TIVAMP and cellubrevin. SNAP23 is structurally and functionally similar to SNAP25 and binds tightly to multiple syntaxins and synaptobrevins/VAMPs. It is an essential component of the high affinity receptor for the general membrane fusion machinery and is an important regulator of transport vesicle docking and fusion.

Synonyms: HsT17016 antibody|LS-B8340 antibody|SNAP 23 antibody|SNAP-23 antibody|SNAP23 antibody|SNAP23A antibody|SNAP23B antibody|SNP23_HUMAN antibody|Synaptosomal associated protein 23 antibody|Synaptosomal associated protein 23 kDa antibody|Synaptosomal associated protein antibody|Synaptosomal-associated protein 23 antibody|Vesicle membrane fusion protein SNAP 23 antibody|Vesicle membrane fusion protein SNAP23 antibody|Vesicle-membrane fusion protein SNAP-23 antibody

UniProt: [O00161](#)

Application Details

Application Notes: WB: Concentration: 0.1-0.5 µg/mL, Tested Species: Human, Rat, Predicted Species: Mouse
IHC-P: Concentration: 0.5-1 µg/mL, Tested Species: Human, Rat, Predicted Species: Mouse,
Epitope Retrieval by Heat: Boiling the paraffin sections in 10 mM citrate buffer, pH 6.0, for

Application Details

20 mins is required for the staining of formalin/paraffin sections.

IHC-F: Concentration: 0.5-1 µg/mL, Tested Species: Human, Mouse, Predicted Species: Rat

ICC: Concentration: 0.5-1 µg/mL, Tested Species: Human

Notes: Tested Species: Species with positive results. Predicted Species: Species predicted to be fit for the product based on sequence similarities. Other applications have not been tested.

Optimal dilutions should be determined by end users.

Comment: Antibody can be supported by chemiluminescence kit ABIN921124 in WB, supported by ABIN921231 in IHC(P), IHC(F) and ICC.

Restrictions: For Research Use only

Handling

Format: Lyophilized

Reconstitution: Add 0.2 mL of distilled water will yield a concentration of 500 µg/mL.

Concentration: 500 µg/mL

Buffer: Each vial contains 5 mg BSA, 0.9 mg NaCl, 0.2 mg Na₂HPO₄, 0.05 mg Thimerosal, 0.05 mg Sodium azide.

Preservative: Thimerosal (Merthiolate), Sodium azide

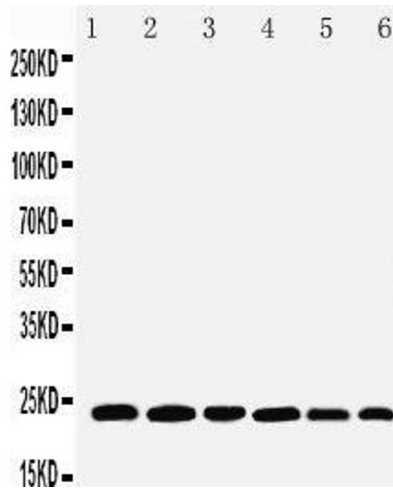
Precaution of Use: This product contains Sodium azide and Thimerosal (Merthiolate): POISONOUS AND HAZARDOUS SUBSTANCES which should be handled by trained staff only.

Handling Advice: Avoid repeated freezing and thawing.

Storage: 4 °C/-20 °C

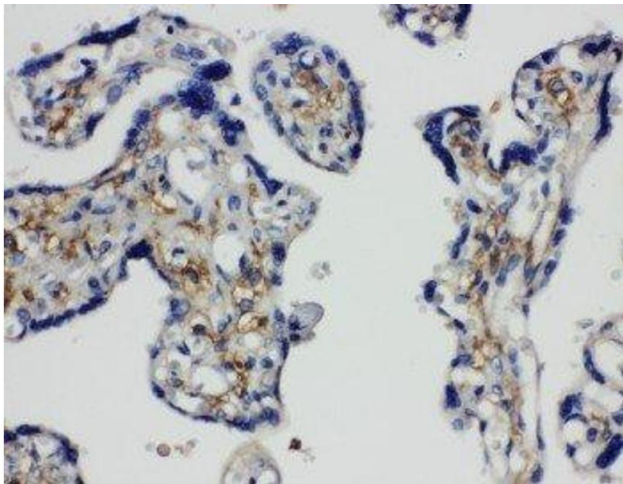
Storage Comment: At -20°C for one year. After reconstitution, at 4°C for one month.
It can also be aliquotted and stored frozen at -20 °C for a longer time. Avoid repeated freezing and thawing.

Expiry Date: 12 months



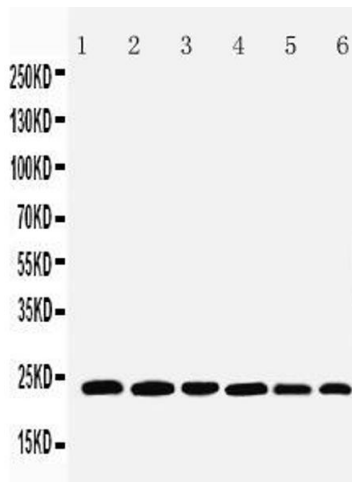
Western Blotting

Image 1. Anti-SNAP23 antibody, Western blotting Lane 1: Rat Spleen Tissue Lysate Lane 2: Rat testis Tissue Lysate Lane 3: Rat Ovary Tissue Lysate Lane 4: HELA Cell Lysate Lane 5: MCF-7 Cell Lysate Lane 6: SKOV Cell Lysate



Immunohistochemistry

Image 2. Anti-SNAP23 antibody, IHC(P) IHC(P): Human Placenta Tissue



Western Blotting

Image 3. Anti-SNAP23 antibody, Western blotting Lane 1: Rat Spleen Tissue Lysate Lane 2: Rat testis Tissue Lysate Lane 3: Rat Ovary Tissue Lysate Lane 4: HELA Cell Lysate Lane 5: MCF-7 Cell Lysate Lane 6: SKOV Cell Lysate

Please check the [product details page](#) for more images. Overall 5 images are available for ABIN3044163.