



[Go to Product page](#)

Datasheet for ABIN3044172  
**anti-CISH antibody (C-Term)**

3 Images

### Overview

Quantity:	100 µg
Target:	CISH
Binding Specificity:	AA 241-258, C-Term
Reactivity:	Human, Rat
Host:	Rabbit
Clonality:	Polyclonal
Conjugate:	This CISH antibody is un-conjugated
Application:	Western Blotting (WB), Immunocytochemistry (ICC), Immunohistochemistry (Paraffin-embedded Sections) (IHC (p))

### Product Details

Purpose:	Rabbit IgG polyclonal antibody for Cytokine-inducible SH2-containing protein(CISH) detection. Tested with WB, IHC-P, ICC in Human,Mouse,Rat.
Immunogen:	A synthetic peptide corresponding to a sequence at the C-terminus of human CISH(241-258aa LPLPRRMADYLRQYPFQL), identical to the related rat and mouse sequences.
Sequence:	LPLPRRMADY LRQYPFQL
Isotype:	IgG
Cross-Reactivity (Details):	Predicted Cross Reactivity: mouse No cross reactivity with other proteins. Predicted Cross Reactivity: Species predicted to be fit for the product based on sequence similarities.

## Product Details

---

Characteristics: Rabbit IgG polyclonal antibody for Cytokine-inducible SH2-containing protein(CISH) detection.  
Tested with WB, IHC-P, ICC in Human,Mouse,Rat.  
Gene Name: cytokine inducible SH2-containing protein  
Protein Name: Cytokine-inducible SH2-containing protein(CIS)

---

Purification: Immunogen affinity purified.

---

## Target Details

---

Target: CISH

---

Alternative Name: CISH ([CISH Products](#))

---

Background: CISH(cytokine inducible SH2-containing protein),also called CIS, CIS-1, G18, SOCS, is an important negative regulator for inflammatory signaling and belongs to the suppressors of cytokine signaling(SOCS) family. CIS family members are known to be cytokine-inducible negative regulators of cytokine signaling. CISH controls interleukin-2 signaling, and variations of CISH with certain SNPs are associated with susceptibility to bacteremia, tuberculosis and malaria. The human CISH gene is mapped to chromosome 3p21.3 by FISH. The mouse gene is tightly linked to the Gnai2 gene on chromosome 9, a region syntenic to human chromosome 3p21. CIS expression was upregulated by lipopolysaccharide(LPS) or *Cryptosporidium parvum* exposure, and this upregulation involved downregulation of MIR98 and LET7, which relieved MIR98- and LET7-mediated translational repression of CIS. Gain- and loss-of-function studies showed that CIS accelerated degradation of IKBA and enhanced NFKB activation in cholangiocytes in response to LPS stimulation or *C parvum* exposure.

Synonyms: BACTS2 antibody|cis 1 antibody|CIS antibody|CIS-1 antibody|CIS1 antibody|CISH antibody|CISH\_HUMAN antibody|Cytokine inducible inhibitor of signaling type 1B antibody|Cytokine inducible SH2 containing protein antibody|Cytokine-inducible SH2-containing protein antibody|G18 antibody|Protein G18 antibody|SOCS antibody|Suppressor of cytokine signaling antibody

---

Pathways: [JAK-STAT Signaling](#), [Response to Growth Hormone Stimulus](#)

---

## Application Details

---

Application Notes: WB: Concentration: 0.1-0.5 µg/mL, Tested Species: Human, Rat, Predicted Species: Mouse  
IHC-P: Concentration: 0.5-1 µg/mL, Tested Species: Human, Rat, Predicted Species: Mouse,  
Epitope Retrieval by Heat: Boiling the paraffin sections in 10 mM citrate buffer, pH 6.0, for

---

## Application Details

---

20 mins is required for the staining of formalin/paraffin sections.

ICC: Concentration: 0.5-1 µg/mL, Tested Species: Human, Predicted Species: Mouse, Rat

Notes: Tested Species: Species with positive results. Predicted Species: Species predicted to be fit for the product based on sequence similarities. Other applications have not been tested.

Optimal dilutions should be determined by end users.

---

Comment: Antibody can be supported by chemiluminescence kit ABIN921124 in WB, supported by ABIN921231 in IHC(P) and ICC.

---

Restrictions: For Research Use only

## Handling

---

Format: Lyophilized

---

Reconstitution: Add 0.2 mL of distilled water will yield a concentration of 500 µg/mL.

---

Concentration: 500 µg/mL

---

Buffer: Each vial contains 5 mg BSA, 0.9 mg NaCl, 0.2 mg Na<sub>2</sub>HPO<sub>4</sub>, 0.05 mg Thimerosal, 0.05 mg Sodium azide.

---

Preservative: Thimerosal (Merthiolate), Sodium azide

---

Precaution of Use: This product contains Sodium azide and Thimerosal (Merthiolate): POISONOUS AND HAZARDOUS SUBSTANCES which should be handled by trained staff only.

---

Handling Advice: Avoid repeated freezing and thawing.

---

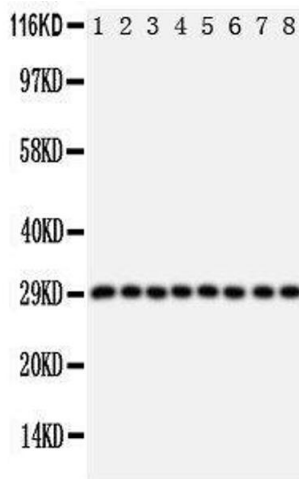
Storage: 4 °C/-20 °C

---

Storage Comment: At -20°C for one year. After reconstitution, at 4°C for one month.  
It can also be aliquotted and stored frozen at -20 °C for a longer time. Avoid repeated freezing and thawing.

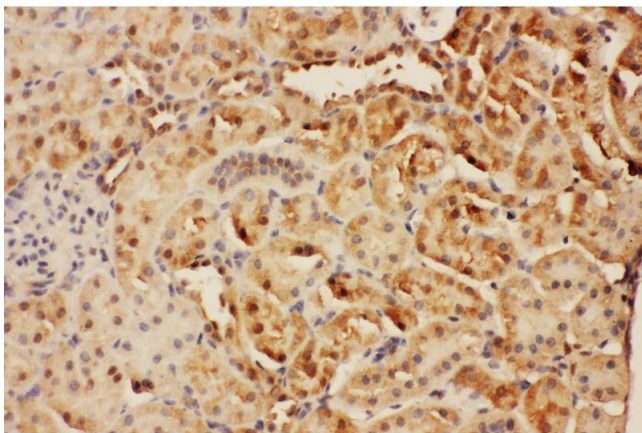
---

Expiry Date: 12 months



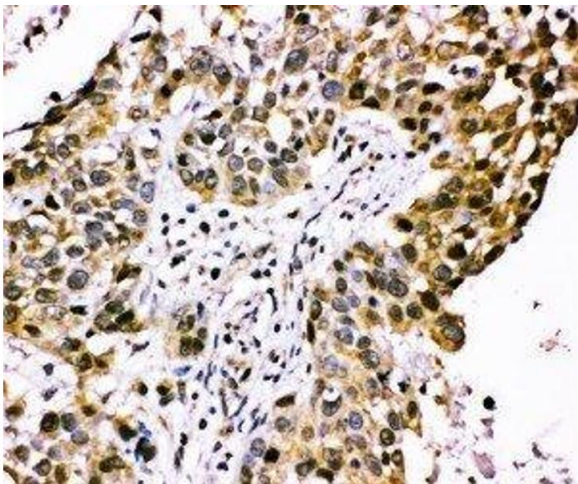
### Western Blotting

**Image 1.**



### Immunohistochemistry

**Image 2.** Anti-CISH antibody, IHC(P) IHC(P): Rat Kidney Tissue



### Immunohistochemistry

**Image 3.** Anti-CISH antibody, IHC(P) IHC(P): Human Lung Cancer Tissue