

Datasheet for ABIN3044175 anti-HLA-DMB antibody (Middle Region)

3 Images

[Go to Product page](#)

Overview

Quantity:	100 µg
Target:	HLA-DMB
Binding Specificity:	AA 81-100, Middle Region
Reactivity:	Human
Host:	Rabbit
Clonality:	Polyclonal
Conjugate:	This HLA-DMB antibody is un-conjugated
Application:	Western Blotting (WB), Immunohistochemistry (Paraffin-embedded Sections) (IHC (p))

Product Details

Purpose:	Rabbit IgG polyclonal antibody for HLA class II histocompatibility antigen, DM beta chain(HLA-DMB) detection. Tested with WB, IHC-P in Human.
Immunogen:	A synthetic peptide corresponding to a sequence in the middle region of human HLA DMB(81-100aa NQKDTLMQRLRNGLQNCATH).
Sequence:	NQKDTLMQRL RNGLQNCATH
Isotype:	IgG
Cross-Reactivity (Details):	No cross reactivity with other proteins.
Characteristics:	<p>Rabbit IgG polyclonal antibody for HLA class II histocompatibility antigen, DM beta chain(HLA-DMB) detection. Tested with WB, IHC-P in Human.</p> <p>Gene Name: major histocompatibility complex, class II, DM beta</p> <p>Protein Name: HLA class II histocompatibility antigen, DM beta chain</p>

Product Details

Purification: Immunogen affinity purified.

Target Details

Target: HLA-DMB

Alternative Name: HLA-DMB ([HLA-DMB Products](#))

Background: HLA-DMB(major histocompatibility complex, class II, DM beta), also known as D6S221E, RING7, HLA-DM histocompatibility type, beta chain, HLADMB or RING7, is a protein that in humans is encoded by the HLA-DMB gene. The HLA-DMB gene is mapped on 6p21.32. HLA-DMB belongs to the HLA class II beta chain paralogues. This class II molecule is a heterodimer consisting of an alpha(DMA) and a beta(DMB) chain, both anchored in the membrane. It is located in intracellular vesicles. DM plays a central role in the peptide loading of MHC class II molecules by helping to release the CLIP(class II-associated invariant chain peptide) molecule from the peptide binding site. Class II molecules are expressed in antigen presenting cells. The beta chain is approximately 26-28 kDa and its gene contains 6 exons. HLA-DMA and -DMB appear to encode subunits of a functional heterodimer that is critical in the pathway of class II antigen presentation.

Synonyms: class II antigen HLA-DM beta chain antibody|class II histocompatibility antigen antibody|Class II histocompatibility antigen M beta chain antibody|D6S221E antibody|DMB antibody|HLA class II histocompatibility antigen DM beta chain antibody|HLA-DM histocompatibility type, beta chain antibody|M beta chain antibody|Major histocompatibility complex class II DM beta antibody|MHC class II antigen DMB antibody|MHC class II antigen HLA DM beta chain antibody|MHC class II HLA DMB antibody|OTTHUMP00000029257 antibody|Really interesting new gene 7 protein antibody|RING 7 antibody|RING7 antibody

UniProt: [P28068](#)

Pathways: [Cancer Immune Checkpoints](#), [Human Leukocyte Antigen \(HLA\) in Adaptive Immune Response](#)

Application Details

Application Notes: WB: Concentration: 0.1-0.5 µg/mL, Tested Species: Human
IHC-P: Concentration: 0.5-1 µg/mL, Tested Species: Human, Epitope Retrieval by Heat: Boiling the paraffin sections in 10 mM citrate buffer, pH 6.0, for 20 mins is required for the staining of formalin/paraffin sections.
Notes: Tested Species: Species with positive results. Predicted Species: Species predicted to be

Application Details

fit for the product based on sequence similarities. Other applications have not been tested.
Optimal dilutions should be determined by end users.

Comment: Antibody can be supported by chemiluminescence kit ABIN921124 in WB, supported by ABIN921231 in IHC(P).

Restrictions: For Research Use only

Handling

Format: Lyophilized

Reconstitution: Add 0.2 mL of distilled water will yield a concentration of 500 µg/mL.

Concentration: 500 µg/mL

Buffer: Each vial contains 5 mg BSA, 0.9 mg NaCl, 0.2 mg Na₂HPO₄, 0.05 mg Thimerosal, 0.05 mg Sodium azide.

Preservative: Thimerosal (Merthiolate), Sodium azide

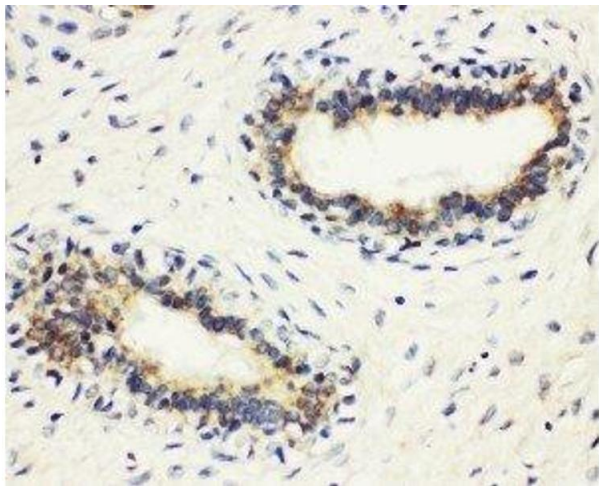
Precaution of Use: This product contains Sodium azide and Thimerosal (Merthiolate): POISONOUS AND HAZARDOUS SUBSTANCES which should be handled by trained staff only.

Handling Advice: Avoid repeated freezing and thawing.

Storage: 4 °C/-20 °C

Storage Comment: At -20°C for one year. After reconstitution, at 4°C for one month.
It can also be aliquotted and stored frozen at -20 °C for a longer time. Avoid repeated freezing and thawing.

Expiry Date: 12 months



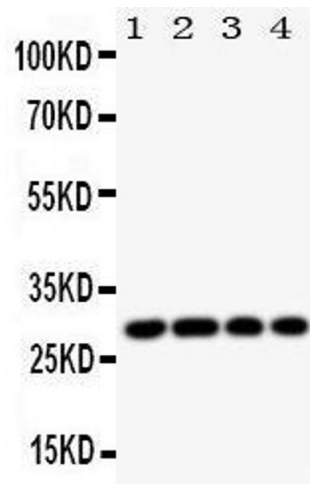
Immunohistochemistry

Image 1. Anti-HLA DMB antibody, IHC(P) IHC(P): Human Mammary Cancer Tissue



Western Blotting

Image 2. Anti-HLA DMB antibody, Western blotting All lanes: Anti HLA DMB at 0.5ug/ml Lane 1: JURKAT Whole Cell Lysate at 40ug Lane 2: JURKAT Whole Cell Lysate at 40ug Lane 3: RAJI Whole Cell Lysate at 40ug Lane 4: HUT Whole Cell Lysate at 40ug Predicted bind size: 29KD Observed bind size: 29KD



Western Blotting

Image 3.