

Datasheet for ABIN3044176
anti-HSPE1 antibody (C-Term)

5 Images

[Go to Product page](#)

Overview

Quantity:	100 µg
Target:	HSPE1
Binding Specificity:	AA 81-102, C-Term
Reactivity:	Human, Mouse, Rat
Host:	Rabbit
Clonality:	Polyclonal
Conjugate:	This HSPE1 antibody is un-conjugated
Application:	Western Blotting (WB), Immunocytochemistry (ICC), Immunohistochemistry (Paraffin-embedded Sections) (IHC (p))

Product Details

Purpose:	Rabbit IgG polyclonal antibody for 10 kDa heat shock protein, mitochondrial(HSPE1) detection. Tested with WB, IHC-P, ICC in Human,Mouse,Rat.
Immunogen:	A synthetic peptide corresponding to a sequence at the C-terminus of human Cpn10(81-102aa VVLDDKDYFLFRDGDILGKYVD), different from the related rat and mouse sequences by one amino acid.
Sequence:	VVLDDKDYFL FRDGDILGKY VD
Isotype:	IgG
Cross-Reactivity (Details):	No cross reactivity with other proteins.
Characteristics:	Rabbit IgG polyclonal antibody for 10 kDa heat shock protein, mitochondrial(HSPE1) detection. Tested with WB, IHC-P, ICC in Human,Mouse,Rat.

Product Details

Gene Name: heat shock 10 kDa protein 1(chaperonin 10)

Protein Name: 10 kDa heat shock protein, mitochondrial(Hsp10)

Purification: Immunogen affinity purified.

Target Details

Target: HSPE1

Alternative Name: HSPE1 ([HSPE1 Products](#))

Background: HSPE1(heat shock 10 kDa protein 1(chaperonin 10)), also called CPN10, GROES, CHAPERONIN 10 HOMOLOG, cpn10 HOMOLOG or HSP10, is a protein that in humans is encoded by the HSPE1 gene. GroES is a heptameric ring of identical 10.4-kD subunits that binds to each end of GroEL to form a symmetric, functional heterodimer. The HSP10 gene consists of 4 exons. The HSPE1 gene is mapped to 2q33.1. The transcriptional activity of the promoter fragment in the HSP60 direction is approximately twice that in the HSP10 direction under normal growth conditions, upon heat shock, promoter activity in either direction increased by a factor of approximately 12. Mutational drifts performed in vitro with 4 different enzymes indicated the GroES overexpression doubled the number of accumulating mutations, and promoted the folding of enzyme variants carrying mutations in the protein core and/or mutations with higher destabilizing effects.

Synonyms: 10 kDa chaperonin antibody|10 kDa heat shock protein mitochondrial antibody|10 kDa heat shock protein, mitochondrial antibody|CH10_HUMAN antibody|Chaperonin 10 antibody|Cpn 10 antibody|CPN10 antibody|Early pregnancy factor antibody|Early-pregnancy factor antibody|EPF antibody|GROES antibody|Heat shock 10kD protein 1 antibody|Heat shock 10kD protein 1 chaperonin 10 antibody|Heat shock 10 kDa protein 1 antibody|Heat shock 10 kDa protein 1 chaperonin 10 antibody|HSP 10 antibody|HSP10 antibody|HSPE 1 antibody|HSPE1 antibody

UniProt: [P61604](#)

Pathways: [Positive Regulation of Endopeptidase Activity](#)

Application Details

Application Notes: WB: Concentration: 0.1-0.5 µg/mL, Tested Species: Human, Rat, Predicted Species: Mouse
IHC-P: Concentration: 0.5-1 µg/mL, Tested Species: Human, Mouse, Rat, Epitope Retrieval by Heat: Boiling the paraffin sections in 10 mM citrate buffer, pH 6.0, for 20 mins is required for the

Application Details

staining of formalin/paraffin sections.

ICC: Concentration: 0.5-1 µg/mL, Tested Species: Human

Notes: Tested Species: Species with positive results. Predicted Species: Species predicted to be fit for the product based on sequence similarities. Other applications have not been tested.

Optimal dilutions should be determined by end users.

Comment: Antibody can be supported by chemiluminescence kit ABIN921124 in WB, supported by ABIN921231 in IHC(P) and ICC.

Restrictions: For Research Use only

Handling

Format: Lyophilized

Reconstitution: Add 0.2 mL of distilled water will yield a concentration of 500 µg/mL.

Concentration: 500 µg/mL

Buffer: Each vial contains 5 mg BSA, 0.9 mg NaCl, 0.2 mg Na₂HPO₄, 0.05 mg Thimerosal, 0.05 mg Sodium azide.

Preservative: Thimerosal (Merthiolate), Sodium azide

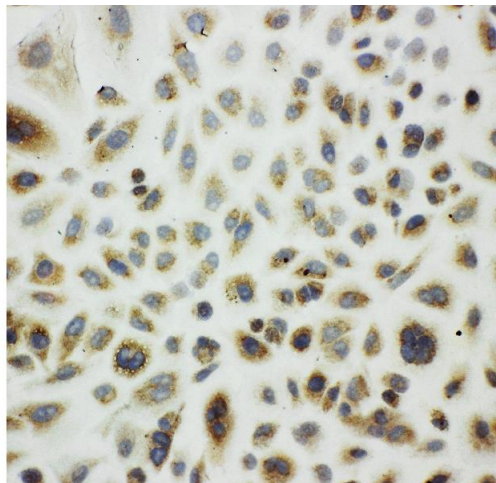
Precaution of Use: This product contains Sodium azide and Thimerosal (Merthiolate): POISONOUS AND HAZARDOUS SUBSTANCES which should be handled by trained staff only.

Handling Advice: Avoid repeated freezing and thawing.

Storage: 4 °C/-20 °C

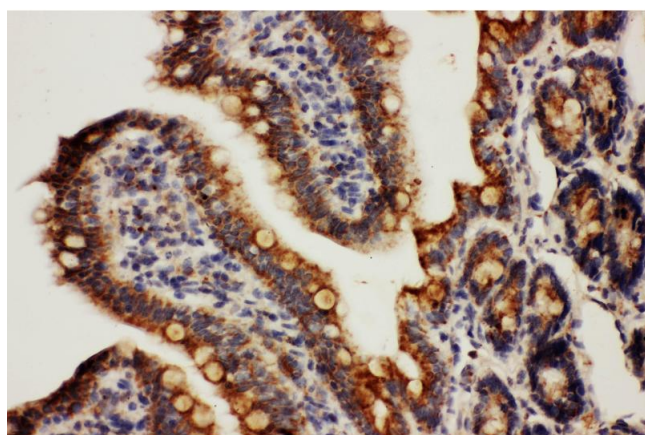
Storage Comment: At -20°C for one year. After reconstitution, at 4°C for one month.
It can also be aliquotted and stored frozen at -20 °C for a longer time. Avoid repeated freezing and thawing.

Expiry Date: 12 months



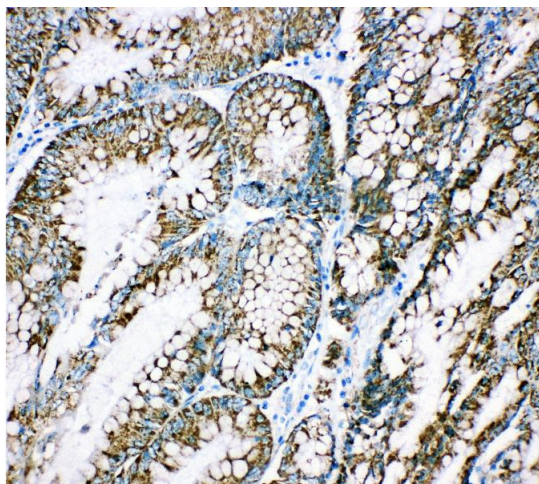
Immunohistochemistry

Image 1. Anti-Cpn10 antibody, ICC ICC: A549 Cell



Immunohistochemistry

Image 2. Anti-Cpn10 antibody, IHC(P) IHC(P): Rat Intestine Tissue



Immunohistochemistry

Image 3. Anti-Cpn10 antibody, IHC(P) IHC(P): Human Intestinal Cancer Tissue

Please check the [product details page](#) for more images. Overall 5 images are available for ABIN3044176.