

Datasheet for ABIN3044177
anti-LASP1 antibody (N-Term)

5 Images

[Go to Product page](#)

Overview

Quantity:	100 µg
Target:	LASP1
Binding Specificity:	AA 16-30, N-Term
Reactivity:	Human, Mouse, Rat
Host:	Rabbit
Clonality:	Polyclonal
Conjugate:	This LASP1 antibody is un-conjugated
Application:	Western Blotting (WB), Immunohistochemistry (Paraffin-embedded Sections) (IHC (p)), Immunocytochemistry (ICC)

Product Details

Purpose:	Rabbit IgG polyclonal antibody for LIM and SH3 domain protein 1(LASP1) detection. Tested with WB, IHC-P, ICC in Human,Mouse,Rat.
Immunogen:	A synthetic peptide corresponding to a sequence at the N-terminus of human LASP1(16-30aa EKVNCLDKFWHKACF), identical to the related rat sequence and different from the related mouse sequence by one amino acid.
Sequence:	EKVNCLDKFW HKACF
Isotype:	IgG
Cross-Reactivity (Details):	No cross reactivity with other proteins.
Characteristics:	Rabbit IgG polyclonal antibody for LIM and SH3 domain protein 1(LASP1) detection. Tested with WB, IHC-P, ICC in Human,Mouse,Rat.

Product Details

Gene Name: LIM and SH3 protein 1

Protein Name: LIM and SH3 domain protein 1(LASP-1)

Purification: Immunogen affinity purified.

Target Details

Target: LASP1

Alternative Name: LASP1 ([LASP1 Products](#))

Background: LASP1(LIM and SH3 domain protein 1), also known as LASP1, is a protein that in humans is encoded by the LASP1 gene. This gene encodes a member of a LIM protein subfamily which is characterized by a LIM motif and a domain of Src homology region 3. This protein functions as an actin-binding protein and possibly in cytoskeletal organization. LASP1 has been shown to interact with Zyxin. Tomasetto et al.(1995) mapped the LASP1 gene to chromosome 17q11-q21.3 by radioactive in situ hybridization. Northern blot analysis revealed that LASP1 mRNA was expressed at a basal level in all normal tissues examined and overexpressed in 8 % of primary breast cancers. In most of these cancers, LASP1 and ERBB2 were simultaneously overexpressed.

Synonyms: LASP 1 antibody|LASP-1 antibody|LASP1 antibody|LASP1_HUMAN antibody|LIM and SH3 domain protein 1 antibody|LIM and SH3 protein 1 antibody|Metastatic lymph node gene 50 protein antibody|MLN 50 antibody|MLN50 antibody|OTTHUMP00000164238 antibody|OTTHUMP00000164239 antibody

UniProt: [Q14847](#)

Application Details

Application Notes: WB: Concentration: 0.1-0.5 µg/mL, Tested Species: Human, Mouse, Rat
IHC-P: Concentration: 0.5-1 µg/mL, Tested Species: Human, Predicted Species: Mouse, Rat, Epitope Retrieval by Heat: Boiling the paraffin sections in 10 mM citrate buffer, pH 6.0, for 20 mins is required for the staining of formalin/paraffin sections.
ICC: Concentration: 0.5-1 µg/mL, Tested Species: Human, Predicted Species: Mouse, Rat
Notes: Tested Species: Species with positive results. Predicted Species: Species predicted to be fit for the product based on sequence similarities. Other applications have not been tested.
Optimal dilutions should be determined by end users.

Comment: Antibody can be supported by chemiluminescence kit ABIN921124 in WB, supported by

Application Details

ABIN921231 in IHC(P) and ICC.

Restrictions: For Research Use only

Handling

Format: Lyophilized

Reconstitution: Add 0.2 mL of distilled water will yield a concentration of 500 µg/mL.

Concentration: 500 µg/mL

Buffer: Each vial contains 5 mg BSA, 0.9 mg NaCl, 0.2 mg Na₂HPO₄, 0.05 mg Thimerosal, 0.05 mg Sodium azide.

Preservative: Thimerosal (Merthiolate), Sodium azide

Precaution of Use: This product contains Sodium azide and Thimerosal (Merthiolate): POISONOUS AND HAZARDOUS SUBSTANCES which should be handled by trained staff only.

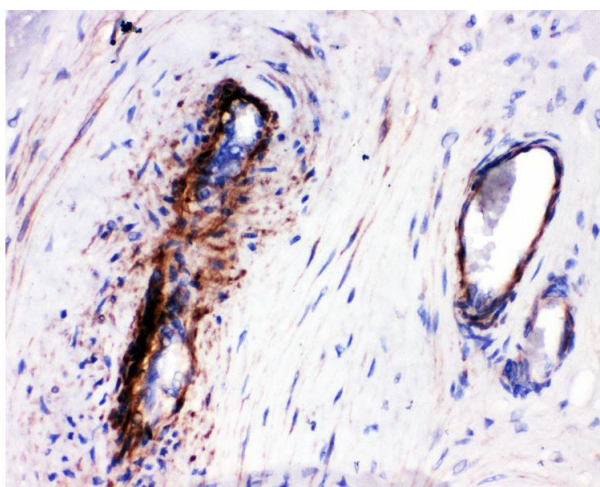
Handling Advice: Avoid repeated freezing and thawing.

Storage: 4 °C/-20 °C

Storage Comment: At -20°C for one year. After reconstitution, at 4°C for one month.
It can also be aliquotted and stored frozen at -20 °C for a longer time. Avoid repeated freezing and thawing.

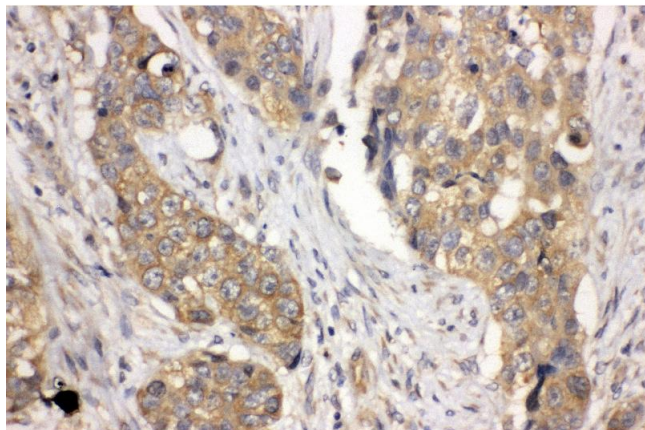
Expiry Date: 12 months

Images



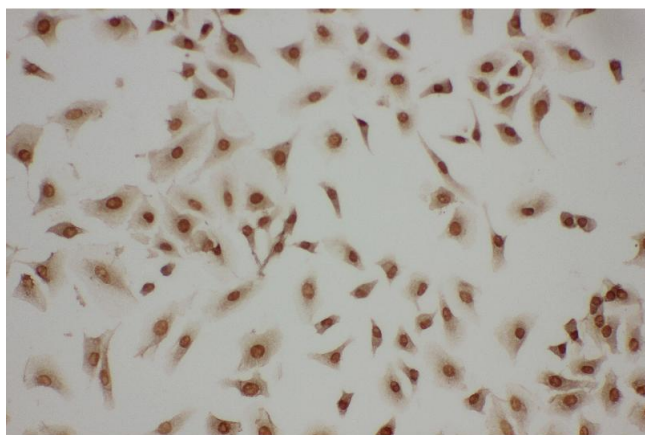
Immunohistochemistry

Image 1. Anti-LASP1 antibody, IHC(P) IHC(P): Human Placenta Tissue



Immunohistochemistry

Image 2. Anti-LASP1 antibody, IHC(P) IHC(P): Human Lung Cancer Tissue



Immunohistochemistry

Image 3. Anti-LASP1 antibody, ICC ICC: A549 Cell

Please check the [product details page](#) for more images. Overall 5 images are available for ABIN3044177.