



[Go to Product page](#)

Datasheet for ABIN3044181
anti-SSR3 antibody (N-Term)

4 Images

Overview

Quantity:	100 µg
Target:	SSR3 (SSRg)
Binding Specificity:	AA 8-23, N-Term
Reactivity:	Human, Mouse, Rat
Host:	Rabbit
Clonality:	Polyclonal
Conjugate:	This SSR3 antibody is un-conjugated
Application:	Western Blotting (WB), Immunohistochemistry (Paraffin-embedded Sections) (IHC (p)), Immunocytochemistry (ICC)

Product Details

Purpose:	Rabbit IgG polyclonal antibody for Translocon-associated protein subunit gamma(SSR3) detection. Tested with WB, IHC-P, ICC in Human,Mouse,Rat.
Immunogen:	A synthetic peptide corresponding to a sequence at the N-terminus of human SSR3(8-23aa KQQSEEDLLLQDFSRN), identical to the related rat and mouse sequences.
Sequence:	KQQSEEDLLL QDFSRN
Isotype:	IgG
Cross-Reactivity (Details):	No cross reactivity with other proteins.
Characteristics:	Rabbit IgG polyclonal antibody for Translocon-associated protein subunit gamma(SSR3) detection. Tested with WB, IHC-P, ICC in Human,Mouse,Rat. Gene Name: signal sequence receptor, gamma(translocon-associated protein gamma)

Product Details

Protein Name: Translocon-associated protein subunit gamma(TRAP-gamma)

Purification: Immunogen affinity purified.

Target Details

Target: SSR3 (SSRg)

Alternative Name: SSR3 ([SSRg Products](#))

Background: SSR3(signal sequence receptor, gamma) is also known as TRAPG. By immunoaffinity chromatography, biochemical purification, peptide sequence analysis, and screening of a rat liver cDNA library, Hartmann et al.(1993) obtained a cDNA encoding Ssr3, which they termed Trap-gamma. The deduced 185-amino acid protein spans the membrane 4 times and is expressed as a 20-kD protein. Gross(2012) mapped the SSR3 gene to chromosome 3q25.31 based on an alignment of the SSR3 sequence with the genomic sequence(GRCh37). Hartmann et al.(1993) found that Ssr3 was associated in equal amounts with Ssr1, Ssr2, and Ssr4 in canine pancreatic microsomes.

Synonyms: Signal sequence receptor subunit gamma antibody|SSR-gamma antibody|Ssr3 antibody|SSRG_HUMAN antibody|Translocon-associated protein subunit gamma antibody|TRAP-gamma antibody|TRAPG antibody

Application Details

Application Notes: WB: Concentration: 0.1-0.5 µg/mL, Tested Species: Human, Rat, Predicted Species: Mouse
IHC-P: Concentration: 0.5-1 µg/mL, Tested Species: Human, Mouse, Rat, Epitope Retrieval by Heat: Boiling the paraffin sections in 10 mM citrate buffer, pH 6.0, for 20 mins is required for the staining of formalin/paraffin sections.
ICC: Concentration: 0.5-1 µg/mL, Tested Species: Human, Predicted Species: Mouse, Rat
Notes: Tested Species: Species with positive results. Predicted Species: Species predicted to be fit for the product based on sequence similarities. Other applications have not been tested.
Optimal dilutions should be determined by end users.

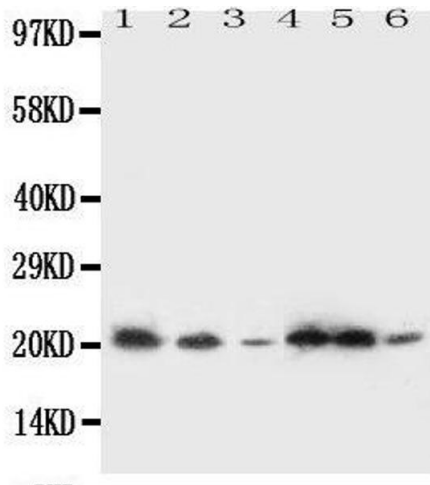
Comment: Antibody can be supported by chemiluminescence kit ABIN921124 in WB, supported by ABIN921231 in IHC(P) and ICC.

Restrictions: For Research Use only

Handling

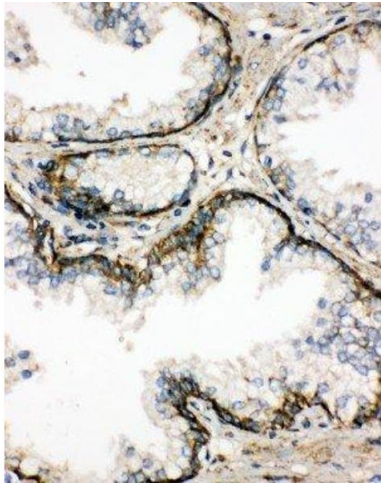
Format:	Lyophilized
Reconstitution:	Add 0.2 mL of distilled water will yield a concentration of 500 µg/mL.
Concentration:	500 µg/mL
Buffer:	Each vial contains 5 mg BSA, 0.9 mg NaCl, 0.2 mg Na ₂ HPO ₄ , 0.05 mg Thimerosal, 0.05 mg Sodium azide.
Preservative:	Thimerosal (Merthiolate), Sodium azide
Precaution of Use:	This product contains Sodium azide and Thimerosal (Merthiolate): POISONOUS AND HAZARDOUS SUBSTANCES which should be handled by trained staff only.
Handling Advice:	Avoid repeated freezing and thawing.
Storage:	4 °C/-20 °C
Storage Comment:	At -20°C for one year. After reconstitution, at 4°C for one month. It can also be aliquotted and stored frozen at -20 °C for a longer time. Avoid repeated freezing and thawing.
Expiry Date:	12 months

Images



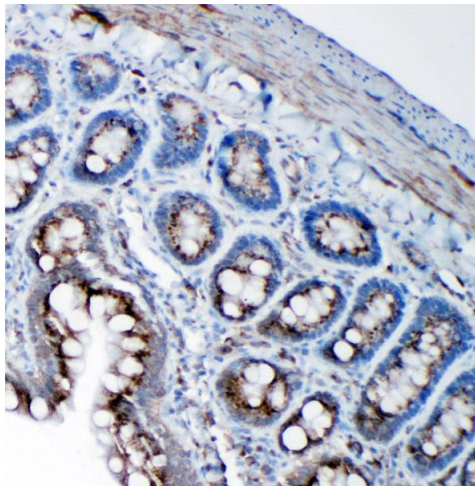
Western Blotting

Image 1.



Immunohistochemistry

Image 2. Anti-SSR3 antibody, IHC(P) IHC(P): Human Prostatic Cancer Tissue



Immunohistochemistry

Image 3. Anti-SSR3 antibody, IHC(P) IHC(P): Rat Intestine Tissue

Please check the [product details page](#) for more images. Overall 4 images are available for ABIN3044181.