

Datasheet for ABIN3044182

anti-14-3-3 sigma/SFN antibody (Middle Region)

4 Images

2 Publications

[Go to Product page](#)

Overview

Quantity:	100 µg
Target:	14-3-3 sigma/SFN (SFN)
Binding Specificity:	AA 140-156, Middle Region
Reactivity:	Human
Host:	Rabbit
Clonality:	Polyclonal
Conjugate:	This 14-3-3 sigma/SFN antibody is un-conjugated
Application:	Western Blotting (WB), Immunohistochemistry (Paraffin-embedded Sections) (IHC (p)), Immunocytochemistry (ICC)

Product Details

Purpose:	Rabbit IgG polyclonal antibody for 14-3-3 protein sigma(SFN) detection. Tested with WB, IHC-P, ICC in Human, Mouse, Rat.
Immunogen:	A synthetic peptide corresponding to a sequence in the middle region of human 14-3-3 sigma(140-156aa KKRIIDSARSAYQEAMD), identical to the related rat and mouse sequences.
Sequence:	KKRIIDSARS AYQEAMD
Isotype:	IgG
Cross-Reactivity (Details):	Predicted Cross Reactivity: mouse, rat No cross reactivity with other proteins. Predicted Cross Reactivity: Species predicted to be fit for the product based on sequence similarities.

Product Details

Characteristics:	Rabbit IgG polyclonal antibody for 14-3-3 protein sigma(SFN) detection. Tested with WB, IHC-P, ICC in Human,Mouse,Rat. Gene Name: stratifin Protein Name: 14-3-3 protein sigma
Purification:	Immunogen affinity purified.

Target Details

Target:	14-3-3 sigma/SFN (SFN)
Alternative Name:	SFN (SFN Products)
Background:	<p>Stratifin(SFN), also known as 14-3-3 protein sigma, is strongly induced by gamma irradiation and other DNA-damaging agents. The induction of 14-3-3-sigma is mediated by a p53 - responsive element located 1.8 kb upstream of its transcription start site. Leffers et al.(1993)obtained peptide sequence and subsequently cloned a T-cell cDNA of the 14-3-3 family of conserved proteins. The protein, called stratifin, was shown to be diffusely distributed in the cytoplasm and was present in cultured epithelial cells. It was most abundant in tissues enriched in stratified keratinizing epithelium.</p> <p>Synonyms: 14 3 3 protein sigma antibody 14-3-3 protein sigma antibody 1433S_HUMAN antibody Epithelial cell marker protein 1 antibody Er antibody HME 1 antibody HME1 antibody MGC143283 antibody Mkrn3 antibody Mme1 antibody OTTHUMP00000004242 antibody RP23 137L22.11 antibody SFN antibody SFN protein antibody Stratifin antibody YWHAS antibody</p>
UniProt:	P31947
Pathways:	p53 Signaling , Myometrial Relaxation and Contraction

Application Details

Application Notes:	WB: Concentration: 0.1-0.5 µg/mL, Tested Species: Human, Predicted Species: Mouse, Rat IHC-P: Concentration: 0.5-1 µg/mL, Tested Species: Human, Predicted Species: Mouse, Rat Epitope Retrieval by Heat: Boiling the paraffin sections in 10 mM citrate buffer, pH 6.0, for 20 mins is required for the staining of formalin/paraffin sections. ICC: Concentration: 0.5-1 µg/mL, Tested Species: Human, Predicted Species: Mouse, Rat Notes: Tested Species: Species with positive results. Predicted Species: Species predicted to be fit for the product based on sequence similarities. Other applications have not been tested.
--------------------	--------------------------------------------------------------------------------------------------------------------------------------------------------------------------------------------------------------------------------------------------------------------------------------------------------------------------------------------------------------------------------------------------------------------------------------------------------------------------------------------------------------------------------------------------------------------------------------------------------------------------------------------------

Application Details

Optimal dilutions should be determined by end users.

Comment: Antibody can be supported by chemiluminescence kit ABIN921124 in WB, supported by ABIN921231 in IHC(P) and ICC.

Restrictions: For Research Use only

Handling

Format: Lyophilized

Reconstitution: Add 0.2 mL of distilled water will yield a concentration of 500 µg/mL.

Concentration: 500 µg/mL

Buffer: Each vial contains 5 mg BSA, 0.9 mg NaCl, 0.2 mg Na₂HPO₄, 0.05 mg Thimerosal, 0.05 mg Sodium azide.

Preservative: Thimerosal (Merthiolate), Sodium azide

Precaution of Use: This product contains Sodium azide and Thimerosal (Merthiolate): POISONOUS AND HAZARDOUS SUBSTANCES which should be handled by trained staff only.

Handling Advice: Avoid repeated freezing and thawing.

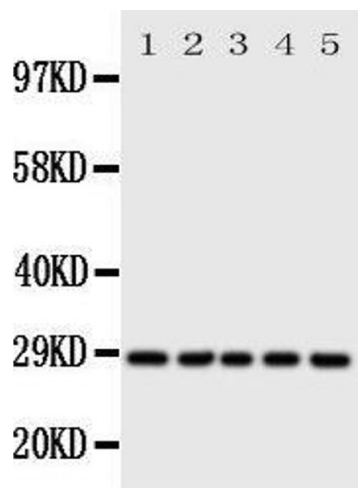
Storage: 4 °C/-20 °C

Storage Comment: At -20°C for one year. After reconstitution, at 4°C for one month.
It can also be aliquotted and stored frozen at -20 °C for a longer time. Avoid repeated freezing and thawing.

Expiry Date: 12 months

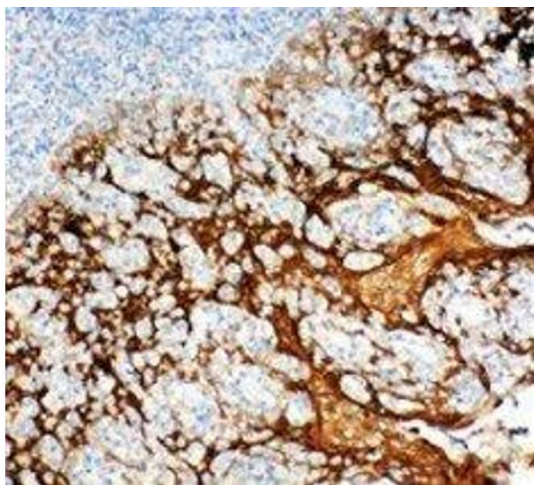
Publications

Product cited in: Luchinat, Barbieri, Rubino, Kozyreva, Cantini, Banci: "In-cell NMR reveals potential precursor of toxic species from SOD1 fALS mutants." in: **Nature communications**, Vol. 5, pp. 5502, (2014) ([PubMed](#)).



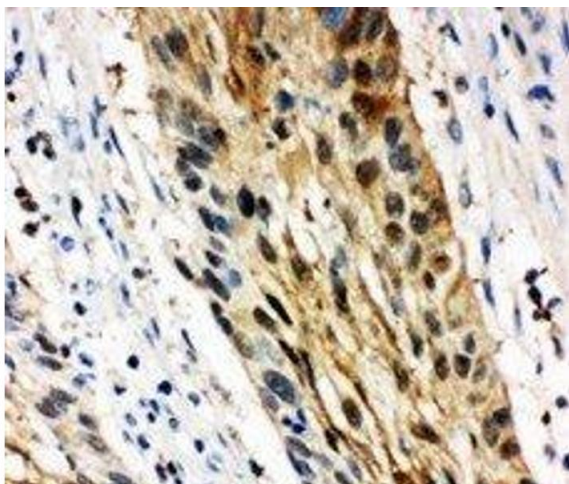
Western Blotting

Image 1.



Immunohistochemistry

Image 2. Anti-14-3-3 sigma antibody, IHC(P) IHC(P): Human Tonsil Tissue



Immunohistochemistry

Image 3. Anti-14-3-3 sigma antibody, IHC(P) IHC(P): Human Oesophagus Squama Cancer Tissue

Please check the [product details page](#) for more images. Overall 4 images are available for ABIN3044182.