



Datasheet for ABIN3044185
anti-HSPB2 antibody (Middle Region)



[Go to Product page](#)

3 Images

Overview

Quantity:	100 µg
Target:	HSPB2
Binding Specificity:	AA 102-118, Middle Region
Reactivity:	Human, Rat
Host:	Rabbit
Clonality:	Polyclonal
Conjugate:	This HSPB2 antibody is un-conjugated
Application:	Western Blotting (WB), Immunocytochemistry (ICC), Immunohistochemistry (Frozen Sections) (IHC (fro))

Product Details

Purpose:	Rabbit IgG polyclonal antibody for Heat shock protein beta-2(HSPB2) detection. Tested with WB, IHC-F, ICC in Human,Mouse,Rat.
Immunogen:	A synthetic peptide corresponding to a sequence in the middle region of human HSPB2(102-118aa RHPQLDRHGFVSREFC), identical to the related rat and mouse sequences.
Sequence:	RHPQLDRHG FVSREFC
Isotype:	IgG
Cross-Reactivity (Details):	Predicted Cross Reactivity: mouse No cross reactivity with other proteins. Predicted Cross Reactivity: Species predicted to be fit for the product based on sequence similarities.

Product Details

Characteristics: Rabbit IgG polyclonal antibody for Heat shock protein beta-2(HSPB2) detection. Tested with WB, IHC-F, ICC in Human, Mouse, Rat.

Gene Name: heat shock 27 kDa protein 2(HspB2)

Protein Name: Heat shock protein beta-2(HspB2)

Purification: Immunogen affinity purified.

Target Details

Target: HSPB2

Alternative Name: HSPB2 ([HSPB2 Products](#))

Background: Alpha-B-crystallin is a member of the alpha-crystallin/small heat-shock protein(HSP) family and under various neuropathologic conditions accumulates in reactive astrocytes and degenerating neurons. In the 5-prime flanking region of the CRYAB gene on 11q22-q23, where a constitutive DNaseI hypersensitive site is located, Iwaki et al.(1997) identified a gene transcribed in the opposite direction. Analysis of its mRNA structure by RT-PCR and 5-prime/3-prime RACE revealed that this gene is composed of 2 exons and encodes a new member of the alpha-crystallin/hsp family. They termed the gene HSPB2. Iwaki et al.(1997) also determined the complete genomic structure of the rat homolog of HSPB2. Southern blot analysis demonstrated that HSPB2 is expressed preferentially in skeletal muscle and heart but not in the lens, while the neighboring CRYAB gene is highly expressed in all 3 tissues. The 2 related genes are arranged in a head-to-head manner with an intergenic sequence of less than 1 kb, raising a possibility of shared regulatory elements for their expression.

Synonyms: DMPK-binding protein antibody|Heat shock 27kD protein 2 antibody|Heat shock 27 kDa protein 2 antibody|Heat shock protein beta-2 antibody|Heat-shock protein beta-2 antibody|Hs.78846 antibody|HSP27 antibody|HspB2 antibody|HSPB2_HUMAN antibody|LOH11CR1K antibody|MGC133245 antibody|MKBP antibody

UniProt: [Q16082](#)

Application Details

Application Notes: WB: Concentration: 0.1-0.5 µg/mL, Tested Species: Human, Rat, Predicted Species: Mouse
IHC-F: Concentration: 0.5-1 µg/mL, Tested Species: Rat, Predicted Species: Human, Mouse
ICC: Concentration: 0.5-1 µg/mL, Tested Species: Human, Predicted Species: Mouse, Rat
Notes: Tested Species: Species with positive results. Predicted Species: Species predicted to be

Application Details

fit for the product based on sequence similarities.

Other applications have not been tested. Optimal dilutions should be determined by end users.

Comment: Antibody can be supported by chemiluminescence kit ABIN921124 in WB, supported by ABIN921231 in IHC(F) and ICC.

Restrictions: For Research Use only

Handling

Format: Lyophilized

Reconstitution: Add 0.2 mL of distilled water will yield a concentration of 500 µg/mL.

Concentration: 500 µg/mL

Buffer: Each vial contains 5 mg BSA, 0.9 mg NaCl, 0.2 mg Na₂HPO₄, 0.05 mg Thimerosal, 0.05 mg Sodium azide.

Preservative: Thimerosal (Merthiolate), Sodium azide

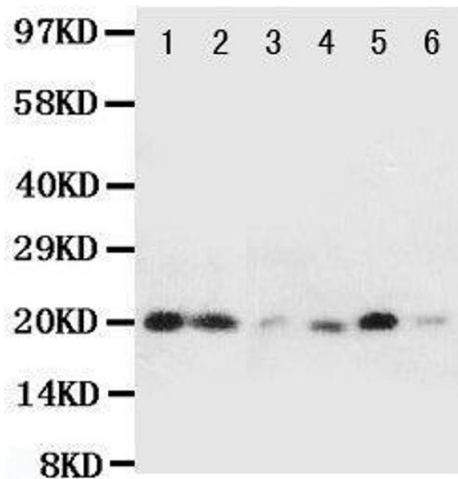
Precaution of Use: This product contains Sodium azide and Thimerosal (Merthiolate): POISONOUS AND HAZARDOUS SUBSTANCES which should be handled by trained staff only.

Handling Advice: Avoid repeated freezing and thawing.

Storage: 4 °C/-20 °C

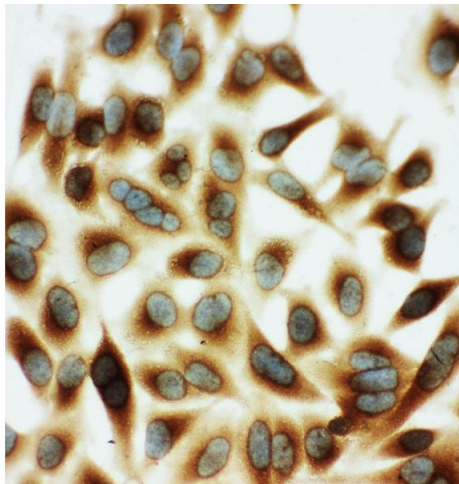
Storage Comment: At -20°C for one year. After reconstitution, at 4°C for one month.
It can also be aliquotted and stored frozen at -20 °C for a longer time. Avoid repeated freezing and thawing.

Expiry Date: 12 months



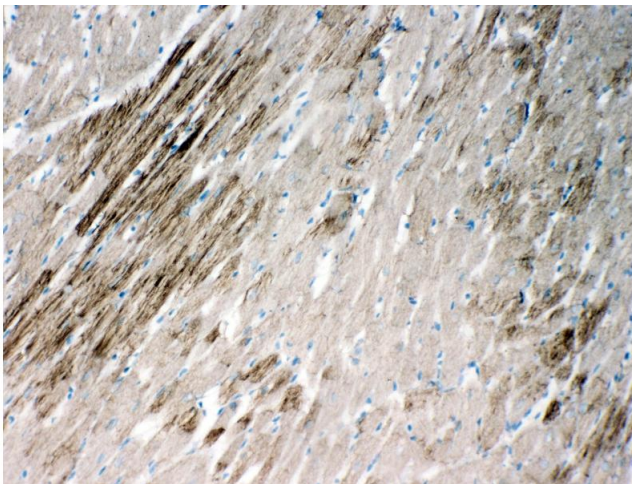
Western Blotting

Image 1.



Immunohistochemistry

Image 2. Anti-HSPB2 antibody, ICC ICC: HELA Cell



Immunohistochemistry

Image 3. Anti-HSPB2 antibody, IHC(F) IHC(F): Rat Cardiac Muscle Tissue