



[Go to Product page](#)

Datasheet for ABIN3044197

## anti-NME1 antibody (C-Term)

3 Images

1 Publication

### Overview

Quantity:	100 µg
Target:	NME1
Binding Specificity:	AA 137-152, C-Term
Reactivity:	Human, Mouse, Rat
Host:	Rabbit
Clonality:	Polyclonal
Application:	Western Blotting (WB), Immunohistochemistry (Paraffin-embedded Sections) (IHC (p)), Immunocytochemistry (ICC)

### Product Details

Purpose:	Rabbit IgG polyclonal antibody for Nucleoside diphosphate kinase A(NME1) detection. Tested with WB, IHC-P, ICC in Human,Mouse,Rat.
Immunogen:	A synthetic peptide corresponding to a sequence at the C-terminus of human NM23A(137-152aa EELVDYTSCAQNWIYE), different from the related mouse sequence by two amino acids and from rat sequence by one amino acid.
Sequence:	EELVDYTSCA QNWIYE
Isotype:	IgG
Cross-Reactivity (Details):	No cross reactivity with other proteins.
Characteristics:	Rabbit IgG polyclonal antibody for Nucleoside diphosphate kinase A(NME1) detection. Tested with WB, IHC-P, ICC in Human,Mouse,Rat. Gene Name: NME/NM23 nucleoside diphosphate kinase 1

## Product Details

---

Protein Name: Nucleoside diphosphate kinase A(NDK A)

---

Purification: Immunogen affinity purified.

## Target Details

---

Target: NME1

---

Alternative Name: NME1 ([NME1 Products](#))

---

Background: NME1(NME/NM23 nucleoside diphosphate kinase 1) also called non-metastatic cells 1, protein(NM23A) expressed in,NM23, NM23-H1, NDPKA, GAAD or AWD, is an enzyme that in humans is encoded by the NME1 gene. The promoters of the mouse and human NME1 genes, like those of other NME genes, contain several binding sites for AP2, NF1, Sp1, LEF1, and response elements to glucocorticoid receptors. The NME1 gene is mapped on 17q21.33. Immunofluorescence microscopy demonstrated colocalization of NME1 in nuclei of B cells expressing EBNA3C. Expression of EBNA3C reversed the ability of NME1 to inhibit migration of BL and breast carcinoma cells. NM23H1 bound SET and was released from inhibition by GZMA cleavage of SET. After GZMA loading or cytotoxic T lymphocyte attack, SET and NM23H1 translocated to the nucleus and SET was degraded, allowing NM23H1 to nick chromosomal DNA. Using a Drosophila model system, Dammai et al.(2003) showed that the Drosophila NME1 homolog, awd, regulates trachea cell motility by modulating FGFR levels through a dynamin -mediated pathway.

Synonyms: AWD antibody|AWD, drosophila, homolog of antibody|GAAD antibody|Granzyme A activated DNase antibody|Granzyme A-activated DNase antibody|GZMA activated DNase antibody|Metastasis inhibition factor NM23 antibody|NB antibody|NBS antibody|NDK A antibody|NDKA antibody|NDKA\_HUMAN antibody|NDP kinase A antibody|NDPK-A antibody|NDPKA antibody|NM23 antibody|NM23 long variant, included antibody|nm23-H1 antibody|NM23-M1 antibody|NM23H1B, included antibody|NME/NM23 nucleoside diphosphate kinase 1 antibody|Nme1 antibody|NME1-NME2 spliced read-through transcript, included antibody|Non-metastatic cells 1, protein(NM23A) expressed in antibody|Nonmetastatic cells 1, protein expressed in antibody|Nonmetastatic protein 23 antibody|Nonmetastatic protein 23, homolog 1 antibody|Nucleoside diphosphate kinase A antibody|Tumor metastatic process-associated protein antibody

UniProt: [P15531](#)

---

Pathways: [Apoptosis](#), [Nucleotide Phosphorylation](#), [Carbohydrate Homeostasis](#), [Ribonucleoside Biosynthetic Process](#)

## Application Details

---

Application Notes:	WB: Concentration: 0.1-0.5 µg/mL, Tested Species: Human, Rat, Predicted Species: Mouse IHC-P: Concentration: 0.5-1 µg/mL, Tested Species: Human, Mouse, Rat, Epitope Retrieval by Heat: Boiling the paraffin sections in 10 mM citrate buffer, pH 6.0, for 20 mins is required for the staining of formalin/paraffin sections. ICC: Concentration: 0.5-1 µg/mL, Tested Species: Human Notes: Tested Species: Species with positive results. Predicted Species: Species predicted to be fit for the product based on sequence similarities. Other applications have not been tested. Optimal dilutions should be determined by end users.
Comment:	Antibody can be supported by chemiluminescence kit ABIN921124 in WB, supported by ABIN921231 in IHC(P) and ICC.
Restrictions:	For Research Use only

## Handling

---

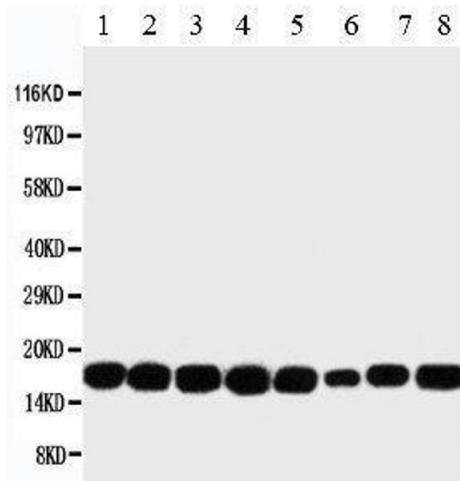
Format:	Lyophilized
Reconstitution:	Add 0.2 mL of distilled water will yield a concentration of 500 µg/mL.
Concentration:	500 µg/mL
Buffer:	Each vial contains 5 mg BSA, 0.9 mg NaCl, 0.2 mg Na <sub>2</sub> HPO <sub>4</sub> , 0.05 mg Thimerosal, 0.05 mg Sodium azide.
Preservative:	Thimerosal (Merthiolate), Sodium azide
Precaution of Use:	This product contains Sodium azide and Thimerosal (Merthiolate): POISONOUS AND HAZARDOUS SUBSTANCES which should be handled by trained staff only.
Handling Advice:	Avoid repeated freezing and thawing.
Storage:	4 °C/-20 °C
Storage Comment:	At -20°C for one year. After reconstitution, at 4°C for one month. It can also be aliquotted and stored frozen at -20 °C for a longer time. Avoid repeated freezing and thawing.
Expiry Date:	12 months

## Publications

---

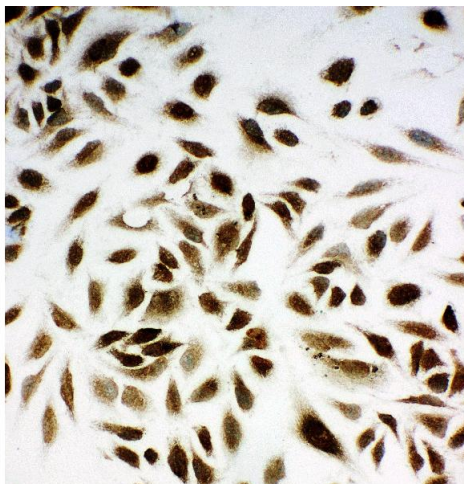
Product cited in:	Whiteland, Nicholls, Shimeld, Easty, Williams, Hill: "Immunohistochemical detection of T-cell subsets and other leukocytes in paraffin-embedded rat and mouse tissues with monoclonal
-------------------	---

antibodies." in: **The journal of histochemistry and cytochemistry : official journal of the Histochemistry Society**, Vol. 43, Issue 3, pp. 313-20, (1995) ([PubMed](#)).



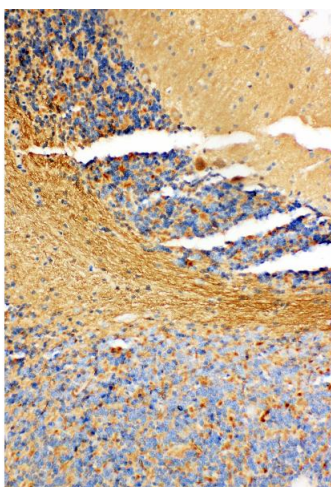
### Western Blotting

**Image 1.**



### Immunohistochemistry

**Image 2.** Anti-NM23A antibody, ICC ICC: HELA Cell



### Immunohistochemistry

**Image 3.** Anti-NM23A antibody, IHC(P) IHC(P): Rat Cerebellum Tissue