

Datasheet for ABIN3044209

anti-Haptoglobin antibody (Middle Region)



[Go to Product page](#)

2 Images

1 Publication

Overview

| | |
|----------------------|--|
| Quantity: | 100 µg |
| Target: | Haptoglobin (HP) |
| Binding Specificity: | AA 294-309, Middle Region |
| Reactivity: | Human |
| Host: | Rabbit |
| Clonality: | Polyclonal |
| Conjugate: | This Haptoglobin antibody is un-conjugated |
| Application: | Western Blotting (WB), Immunohistochemistry (Paraffin-embedded Sections) (IHC (p)) |

Product Details

| | |
|-----------------------------|--|
| Purpose: | Rabbit IgG polyclonal antibody for Haptoglobin(HP) detection. Tested with WB, IHC-P in Human. |
| Immunogen: | A synthetic peptide corresponding to a sequence in the middle region of human Haptoglobin(294-309aa DHLKYVMLPVADQDQC). |
| Sequence: | DHLKYVMLPV ADQDQC |
| Isotype: | IgG |
| Cross-Reactivity (Details): | No cross reactivity with other proteins. |
| Characteristics: | Rabbit IgG polyclonal antibody for Haptoglobin(HP) detection. Tested with WB, IHC-P in Human. Gene Name: haptoglobin Protein Name: Haptoglobin |
| Purification: | Immunogen affinity purified. |

Target Details

| | |
|-------------------|---|
| Target: | Haptoglobin (HP) |
| Alternative Name: | HP (HP Products) |
| Background: | <p>Haptoglobin(HP), is a protein that in humans is encoded by the HP gene. Haptoglobin, a plasma glycoprotein that binds free hemoglobin, has a tetrameric structure of 2 alpha and 2 beta polypeptides that are covalently associated by disulfide bonds. Haptoglobin is homologous to serine proteases of the chymotrypsinogen family. In the chimpanzee, there are 3 genes in the haptoglobin family(haptoglobin, HP, haptoglobin-related, HPR, and haptoglobin-primate, HPP), whereas only 2 genes exist in humans(HP and HPR). There are similarities between the primary structures of the alpha chain and of light chains of gamma globulins. The alpha haptoglobin locus is on the long arm of chromosome 16, where its exact cytogenetic location is 16q22.2. A major function of haptoglobin is to bind hemoglobin(Hb) to form a stable Hp-Hb complex and thereby prevent Hb-induced oxidative tissue damage. Haptoglobin is an unusual secretory protein in that it is proteolytically processed in the endoplasmic reticulum and not in the Golgi. The human haptoglobin HP*2 allele contains a 1.7-kb intragenic duplication that arose after a unique nonhomologous recombination between the prototype HP*1 alleles.</p> <p>Synonyms: Binding peptide antibody Bp antibody Haptoglobin alpha chain antibody Haptoglobin alpha(1S) beta antibody Haptoglobin alpha(2FS) beta antibody Haptoglobin beta chain antibody Haptoglobin, alpha polypeptide antibody Haptoglobin, beta polypeptide antibody HP antibody Hp2 alpha antibody HP2 ALPHA2 antibody HP2ALPHA2 antibody HPA1S antibody HPT antibody HPT_HUMAN antibody MGC111141 antibody Zonulin antibody</p> |
| UniProt: | P00738 |
| Pathways: | Transition Metal Ion Homeostasis |

Application Details

| | |
|--------------------|--|
| Application Notes: | <p>WB: Concentration: 0.1-0.5 µg/mL, Tested Species: Human</p> <p>IHC-P: Concentration: 0.5-1 µg/mL, Tested Species: Human, Epitope Retrieval by Heat: Boiling the paraffin sections in 10 mM citrate buffer, pH 6.0, for 20 mins is required for the staining of formalin/paraffin sections.</p> <p>Notes: Tested Species: Species with positive results. Predicted Species: Species predicted to be fit for the product based on sequence similarities. Other applications have not been tested.</p> <p>Optimal dilutions should be determined by end users.</p> |
| Comment: | Antibody can be supported by chemiluminescence kit ABIN921124 in WB, supported by |

Application Details

ABIN921231 in IHC(P).

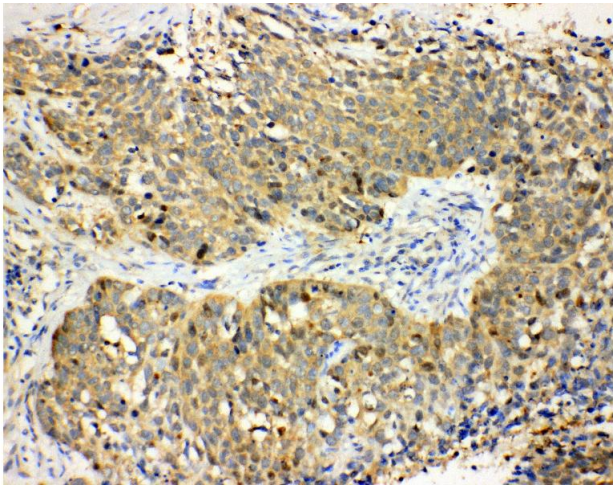
Restrictions: For Research Use only

Handling

| | |
|--------------------|---|
| Format: | Lyophilized |
| Reconstitution: | Add 0.2 mL of distilled water will yield a concentration of 500 µg/mL. |
| Concentration: | 500 µg/mL |
| Buffer: | Each vial contains 5 mg BSA, 0.9 mg NaCl, 0.2 mg Na ₂ HPO ₄ , 0.05 mg Thimerosal, 0.05 mg Sodium azide. |
| Preservative: | Thimerosal (Merthiolate), Sodium azide |
| Precaution of Use: | This product contains Sodium azide and Thimerosal (Merthiolate): POISONOUS AND HAZARDOUS SUBSTANCES which should be handled by trained staff only. |
| Handling Advice: | Avoid repeated freezing and thawing. |
| Storage: | 4 °C/-20 °C |
| Storage Comment: | At -20°C for one year. After reconstitution, at 4°C for one month. It can also be aliquotted and stored frozen at -20 °C for a longer time. Avoid repeated freezing and thawing. |
| Expiry Date: | 12 months |

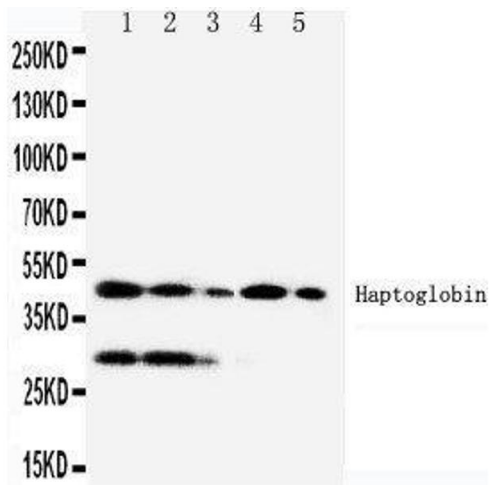
Publications

| | |
|-------------------|---|
| Product cited in: | Cao, Chen, Gao, Hu, Liang, Xiao: "Identification of a protein associated with the activity of cytokine-induced killer cells." in: Oncology letters , Vol. 14, Issue 6, pp. 6937-6942, (2017) (PubMed). |
|-------------------|---|



Immunohistochemistry

Image 1. Anti-Haptoglobin antibody, IHC(P) IHC(P): Human Lung Cancer Tissue



Western Blotting

Image 2. Anti-Haptoglobin antibody, Western blotting Lane 1:RAJI Cell Lysate Lane 2:HL-60 Cell Lysate Lane 3:HUT102 Cell Lysate Lane 4:JURKAT Cell Lysate Lane 5:CEM Cell Lysate