

Datasheet for ABIN3044234  
**anti-XRCC1 antibody (N-Term)**

## 4 Images

[Go to Product page](#)

## Overview

Quantity:	100 µg
Target:	XRCC1
Binding Specificity:	AA 15-34, N-Term
Reactivity:	Human, Mouse, Rat
Host:	Rabbit
Clonality:	Polyclonal
Application:	Western Blotting (WB), Immunohistochemistry (Paraffin-embedded Sections) (IHC (p)), Immunocytochemistry (ICC)

## Product Details

Purpose:	Rabbit IgG polyclonal antibody for DNA repair protein XRCC1(XRCC1) detection. Tested with WB, IHC-P, ICC in Human,Mouse,Rat.
Immunogen:	A synthetic peptide corresponding to a sequence at the N-terminus of human XRCC1(15-34aa QDSTHCAENLLKADTYRKWR), identical to the related mouse sequence, and different from the related rat sequence by one amino acid.
Sequence:	QDSTHCAENL LKADTYRKWR
Isotype:	IgG
Cross-Reactivity (Details):	No cross reactivity with other proteins.
Characteristics:	Rabbit IgG polyclonal antibody for DNA repair protein XRCC1(XRCC1) detection. Tested with WB, IHC-P, ICC in Human,Mouse,Rat.  Gene Name: X-ray repair complementing defective repair in Chinese hamster cells 1

## Product Details

Protein Name: DNA repair protein XRCC1

Purification: Immunogen affinity purified.

## Target Details

Target: XRCC1

Alternative Name: XRCC1 ([XRCC1 Products](#))

Background: XRCC1(X-RAY REPAIR, COMPLEMENTING DEFECTIVE, IN CHINESE HAMSTER, 1) is a DNA repair protein which complexes with DNA ligase III. The protein encoded by this gene is involved in the efficient repair of DNA single-strand breaks formed by exposure to ionizing radiation and alkylating agents. The XRCC1 gene is mapped to 19q13.31. The XRCC1 interacts with DNA ligase III, polymerase beta and poly(ADP-ribose) polymerase to participate in the base excision repair pathway. It may play a role in DNA processing during meiosis and recombination in germ cells. A rare microsatellite polymorphism in this gene is associated with cancer in patients of varying radiosensitivity. XRCC1 is phosphorylated in vivo and in vitro by CK2, and CK2 phosphorylation of XRCC1 on ser518, thr519, and thr523 largely determines aprataxin binding to XRCC1 through its FHA domain.

Synonyms: DNA repair protein XRCC1 antibody|RCC antibody|X ray repair complementing defective repair in chinese hamster antibody|X ray repair complementing defective repair in chinese hamster cells 1 antibody|X ray Repair Complementing Defective Repair in Chinese Hamster Cells antibody|X ray repair cross complementing protein 1 antibody|X ray repair, complementing defective, repair in Chinese hamster antibody|X-ray repair cross-complementing protein 1 antibody|XRCC 1 antibody|Xrcc1 antibody|XRCC1\_HUMAN antibody

UniProt: [P18887](#)

Pathways: [DNA Damage Repair](#)

## Application Details

Application Notes: WB: Concentration: 0.1-0.5 µg/mL, Tested Species: Human, Mouse, Rat  
IHC-P: Concentration: 0.5-1 µg/mL, Tested Species: Human, Predicted Species: Mouse, Rat, Epitope Retrieval by Heat: Boiling the paraffin sections in 10 mM citrate buffer, pH 6.0, for 20 mins is required for the staining of formalin/paraffin sections.  
ICC: Concentration: 0.5-1 µg/mL, Tested Species: Human, Predicted Species: Mouse, Rat  
Notes: Tested Species: Species with positive results. Predicted Species: Species predicted to be

## Application Details

fit for the product based on sequence similarities. Other applications have not been tested.  
Optimal dilutions should be determined by end users.

Comment: Antibody can be supported by chemiluminescence kit ABIN921124 in WB, supported by ABIN921231 in IHC(P) and ICC.

Restrictions: For Research Use only

## Handling

Format: Lyophilized

Reconstitution: Add 0.2 mL of distilled water will yield a concentration of 500 µg/mL.

Concentration: 500 µg/mL

Buffer: Each vial contains 5 mg BSA, 0.9 mg NaCl, 0.2 mg Na<sub>2</sub>HPO<sub>4</sub>, 0.05 mg Thimerosal, 0.05 mg Sodium azide.

Preservative: Thimerosal (Merthiolate), Sodium azide

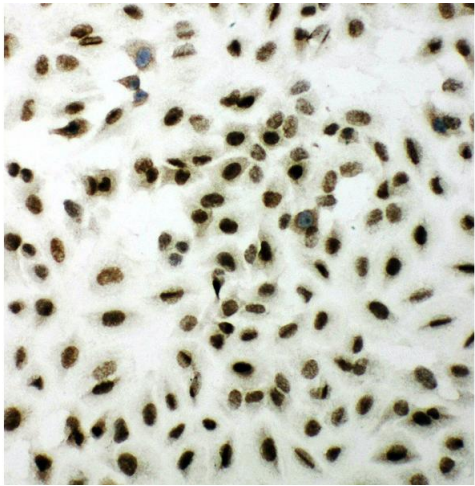
Precaution of Use: This product contains Sodium azide and Thimerosal (Merthiolate): POISONOUS AND HAZARDOUS SUBSTANCES which should be handled by trained staff only.

Handling Advice: Avoid repeated freezing and thawing.

Storage: 4 °C/-20 °C

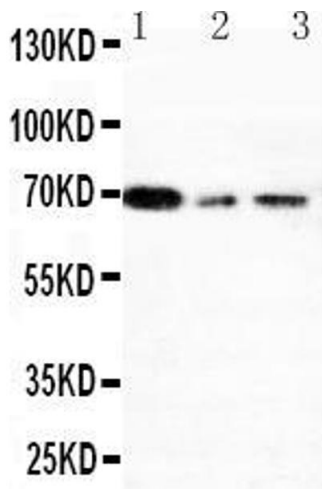
Storage Comment: At -20°C for one year. After reconstitution, at 4°C for one month.  
It can also be aliquotted and stored frozen at -20 °C for a longer time. Avoid repeated freezing and thawing.

Expiry Date: 12 months



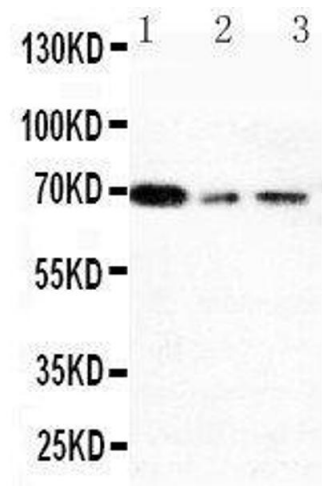
#### Immunohistochemistry

**Image 1.** Anti-XRCC1 antibody, ICC ICC: A549 Cell



#### Western Blotting

**Image 2.** Anti-XRCC1 antibody, Western blotting Lane 1: 293T Cell Lysate Lane 2: A431 Cell Lysate Lane 3: HELA Cell Lysate



#### Western Blotting

**Image 3.** Anti-XRCC1 antibody, Western blotting Lane 1: 293T Cell Lysate Lane 2: A431 Cell Lysate Lane 3: HELA Cell Lysate

Please check the [product details page](#) for more images. Overall 4 images are available for ABIN3044234.