

Datasheet for ABIN3044239  
**anti-BUB3 antibody (Middle Region)**

## 5 Images

[Go to Product page](#)

## Overview

Quantity:	100 µg
Target:	BUB3
Binding Specificity:	AA 76-90, Middle Region
Reactivity:	Human, Rat
Host:	Rabbit
Clonality:	Polyclonal
Application:	Western Blotting (WB), Immunohistochemistry (Paraffin-embedded Sections) (IHC (p)), Immunocytochemistry (ICC), Immunohistochemistry (Frozen Sections) (IHC (fro))

## Product Details

Purpose:	Rabbit IgG polyclonal antibody for Mitotic checkpoint protein BUB3(BUB3) detection. Tested with WB, IHC-P, IHC-F, ICC in Human, Mouse, Rat.
Immunogen:	A synthetic peptide corresponding to a sequence in the middle region of human Bub3(76-90aa DHQLKMHDNLNTDQEN), identical to the related rat and mouse sequences.
Sequence:	DHQLKMHDNLN TDQEN
Isotype:	IgG
Cross-Reactivity (Details):	<p>Predicted Cross Reactivity: mouse</p> <p>No cross reactivity with other proteins.</p> <p>Predicted Cross Reactivity: Species predicted to be fit for the product based on sequence similarities.</p>
Characteristics:	Rabbit IgG polyclonal antibody for Mitotic checkpoint protein BUB3(BUB3) detection. Tested

## Product Details

with WB, IHC-P, IHC-F, ICC in Human, Mouse, Rat.

Gene Name: budding uninhibited by benzimidazoles 3 homolog (yeast)

Protein Name: Mitotic checkpoint protein BUB3

Purification: Immunogen affinity purified.

## Target Details

Target: BUB3

Alternative Name: BUB3 ([BUB3 Products](#))

Background: BUB3 (BUDDING UNINHIBITED BY BENZIMIDAZOLES 3) is a protein that in humans is encoded by the BUB3 gene. And it is mapped on 10q26.13. Bub3 is also a protein involved with the regulation of the Spindle Assembly Checkpoint (SAC), though BUB3 is non-essential in yeast, it is essential in higher eukaryotes. As one of the checkpoint proteins, Bub3 delays the irreversible onset of anaphase through direction of kinetochore localization during prometaphase to achieve biorentation. Bub3 directs the localization of Bub1 at the kinetochore in order to activate the SAC. Bub3 also acts as a regulator in that it affects binding of Mad3 to Mad2. Using deletion analysis, the authors identified a domain of BUB1 that is required both for binding BUB3 and for kinetochore localization of BUB1.

Synonyms: Aa2-050 antibody|AU019800 antibody|AU021329 antibody|AU043350 antibody|AW146323 antibody|BUB 3 antibody|BUB 3L antibody|BUB3(budding uninhibited by benzimidazoles 3, yeast) homolog antibody|bub3 antibody|BUB3 budding uninhibited by benzimidazoles 3 homolog antibody|BUB3\_HUMAN antibody|BUB3L antibody|Budding uninhibited by benomyl antibody|Budding uninhibited by benzimidazoles 3 antibody|Budding uninhibited by benzimidazoles 3 homolog (S. cerevisiae) antibody|Budding uninhibited by benzimidazoles 3 homolog (yeast) antibody|Budding uninhibited by benzimidazoles 3 homolog antibody|Budding uninhibited by benzimidazoles 3, S. cerevisiae, homolog of antibody|C78067 antibody|hBUB3 antibody|Mitotic checkpoint component antibody|Mitotic checkpoint protein bub3 antibody|OTTHUMP00000020679 antibody|OTTHUMP00000020680 antibody|WD repeat type I transmembrane protein A72.5 antibody

UniProt: [O43684](#)

Pathways: [Maintenance of Protein Location](#)

## Application Details

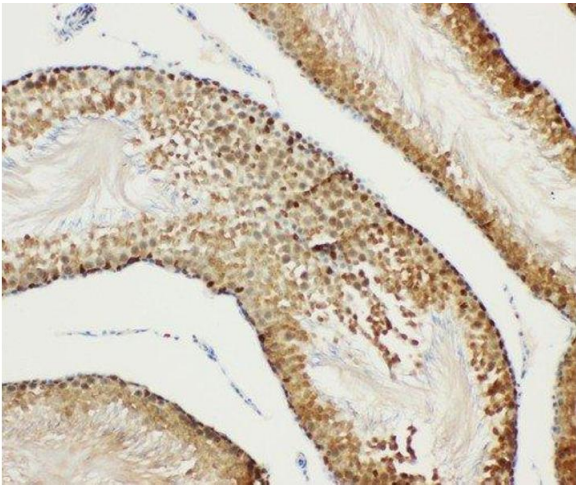
Application Notes:	WB: Concentration: 0.1-0.5 µg/mL, Tested Species: Human, Predicted Species: Mouse, Rat IHC-P: Concentration: 0.5-1 µg/mL, Tested Species: Human, Rat, Predicted Species: Mouse, Epitope Retrieval by Heat: Boiling the paraffin sections in 10 mM citrate buffer, pH 6.0, for 20 mins is required for the staining of formalin/paraffin sections. IHC-F: Concentration: 0.5-1 µg/mL, Tested Species: Rat, Predicted Species: Human, Mouse ICC: Concentration: 0.5-1 µg/mL, Tested Species: Human, Predicted Species: Mouse, Rat Notes: Tested Species: Species with positive results. Predicted Species: Species predicted to be fit for the product based on sequence similarities. Other applications have not been tested. Optimal dilutions should be determined by end users.
--------------------	--

Comment:	Antibody can be supported by chemiluminescence kit ABIN921124 in WB, supported by ABIN921231 in IHC(P), IHC(F) and ICC.
----------	---

Restrictions:	For Research Use only
---------------	-----------------------

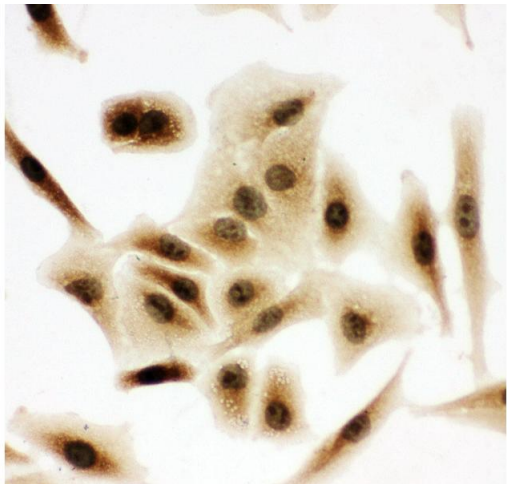
## Handling

Format:	Lyophilized
Reconstitution:	Add 0.2 mL of distilled water will yield a concentration of 500 µg/mL.
Concentration:	500 µg/mL
Buffer:	Each vial contains 5 mg BSA, 0.9 mg NaCl, 0.2 mg Na <sub>2</sub> HPO <sub>4</sub> , 0.05 mg Thimerosal, 0.05 mg Sodium azide.
Preservative:	Thimerosal (Merthiolate), Sodium azide
Precaution of Use:	This product contains Sodium azide and Thimerosal (Merthiolate): POISONOUS AND HAZARDOUS SUBSTANCES which should be handled by trained staff only.
Handling Advice:	Avoid repeated freezing and thawing.
Storage:	4 °C/-20 °C
Storage Comment:	At -20°C for one year. After reconstitution, at 4°C for one month. It can also be aliquotted and stored frozen at -20 °C for a longer time. Avoid repeated freezing and thawing.
Expiry Date:	12 months



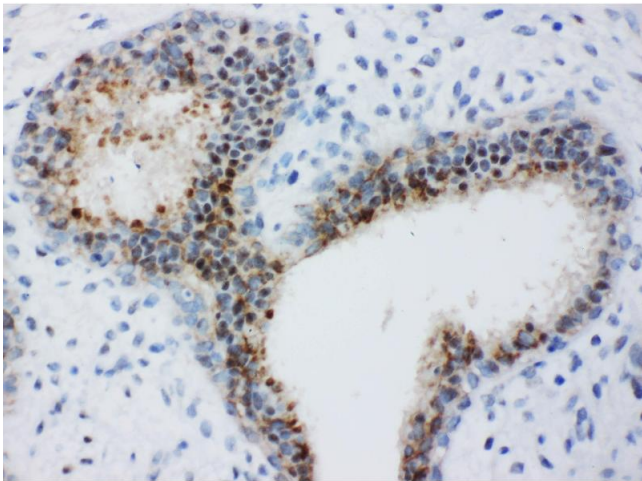
Immunohistochemistry

**Image 1.** Anti-Bub3 antibody, IHC(P) IHC(P): Rat Testis Tissue



Immunohistochemistry

**Image 2.** Anti-Bub3 antibody, ICC ICC: A549 Cell



Immunohistochemistry

**Image 3.** Anti-Bub3 antibody, IHC(P) IHC(P): Human Mammary Cancer Tissue

Please check the [product details page](#) for more images. Overall 5 images are available for ABIN3044239.