

Datasheet for ABIN3044242
anti-MCM2 antibody (C-Term)

5 Images

[Go to Product page](#)

Overview

Quantity:	100 µg
Target:	MCM2
Binding Specificity:	AA 889-904, C-Term
Reactivity:	Human, Rat
Host:	Rabbit
Clonality:	Polyclonal
Conjugate:	This MCM2 antibody is un-conjugated
Application:	Western Blotting (WB), Immunohistochemistry (Paraffin-embedded Sections) (IHC (p)), Immunocytochemistry (ICC)

Product Details

Purpose:	Rabbit IgG polyclonal antibody for DNA replication licensing factor MCM2(MCM2) detection. Tested with WB, IHC-P, ICC in Human,Mouse,Rat.
Immunogen:	A synthetic peptide corresponding to a sequence at the C-terminus of human MCM2(889-904aa NKFSHDLKRKMILQQF), different from the related rat and mouse sequences by two amino acids.
Sequence:	NKFSHDLKRK MILQQF
Isotype:	IgG
Cross-Reactivity (Details):	Predicted Cross Reactivity: mouse No cross reactivity with other proteins. Predicted Cross Reactivity: Species predicted to be fit for the product based on sequence

Product Details

similarities.

Characteristics: Rabbit IgG polyclonal antibody for DNA replication licensing factor MCM2(MCM2) detection.
Tested with WB, IHC-P, ICC in Human,Mouse,Rat.
Gene Name: minichromosome maintenance complex component 2
Protein Name: DNA replication licensing factor MCM2

Purification: Immunogen affinity purified.

Target Details

Target: MCM2

Alternative Name: MCM2 ([MCM2 Products](#))

Background: MCM2(MINICHROMOSOME MAINTENANCE, S. CEREVISIAE, HOMOLOG OF, 2),also known as MITOTIN, CDCL1 or BM28, is a human nuclear protein that plays an important role in 2 crucial steps of the cell cycle, namely, onset of DNA replication and cell division. And it is similar to members of the family of early S-phase proteins. The MCM2 gene is mapped to 3q21.3. The hexameric protein complex formed by MCM proteins is a key component of the pre-replication complex(pre-RC) and may be involved in the formation of replication forks and in the recruitment of other DNA replication related proteins. In the G0 stage, the MCM2 and MCM5 proteins were much less abundant than the MCM7 and MCM3 proteins, which suggests that the MCM proteins are not present in stoichiometric amounts and that only a proportion of these molecules actively participate in cell cycle regulation as part of MCM complexes.

Synonyms: BM28 antibody|CCNL 1 antibody|CCNL1 antibody|CDC like 1 antibody|CDC like-1 antibody|cdc19 antibody|CDCL 1 antibody|CDCL1 antibody|Cell devision cycle like 1 antibody|Cyclin like 1 antibody|cyclin like-1 antibody|D3S3194 antibody|DNA replication licensing factor MCM2 antibody|KIAA0030 antibody|MCM 2 antibody|MCM2 antibody|MCM2 minichromosome maintenance deficient 2 mitotin antibody|MCM2 minichromosome maintenance deficient 2 mitotin(S. cerevisiae) antibody|MCM2 minichromosome maintenance deficient 2, mitotin antibody|MCM2_HUMAN antibody|MGC10606 antibody|Minichromosome maintenance complex component 2 antibody|Minichromosome maintenance deficient 2(mitotin) antibody|Minichromosome maintenance deficient 2 mitotin antibody|Minichromosome maintenance protein 2 antibody|Minichromosome maintenance protein 2 homolog antibody|Mitotin antibody|Nuclear protein BM28 antibody|OTTHUMP00000216047 antibody|OTTHUMP00000216050 antibody

Target Details

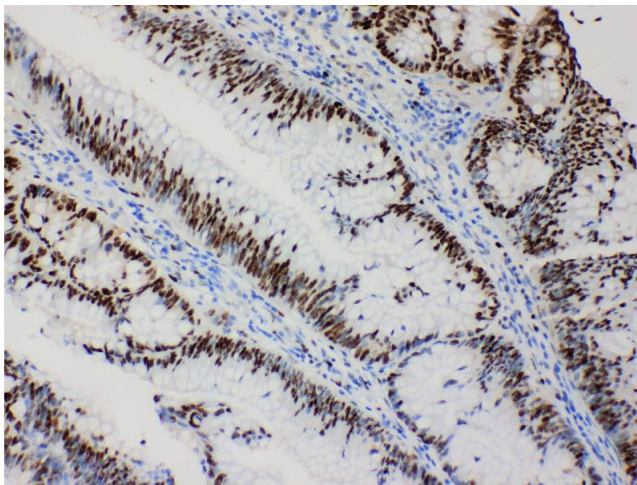
UniProt:	P49736
Pathways:	DNA Damage Repair , Mitotic G1-G1/S Phases , DNA Replication , Chromatin Binding , Synthesis of DNA

Application Details

Application Notes:	WB: Concentration: 0.1-0.5 µg/mL, Tested Species: Human, Rat, Predicted Species: Mouse IHC-P: Concentration: 0.5-1 µg/mL, Tested Species: Human, Epitope Retrieval by Heat: Boiling the paraffin sections in 10 mM citrate buffer, pH 6.0, for 20 mins is required for the staining of formalin/paraffin sections. ICC: Concentration: 0.5-1 µg/mL, Tested Species: Human Notes: Tested Species: Species with positive results. Predicted Species: Species predicted to be fit for the product based on sequence similarities. Other applications have not been tested. Optimal dilutions should be determined by end users.
Comment:	Antibody can be supported by chemiluminescence kit ABIN921124 in WB, supported by ABIN921231 in IHC(P) and ICC.
Restrictions:	For Research Use only

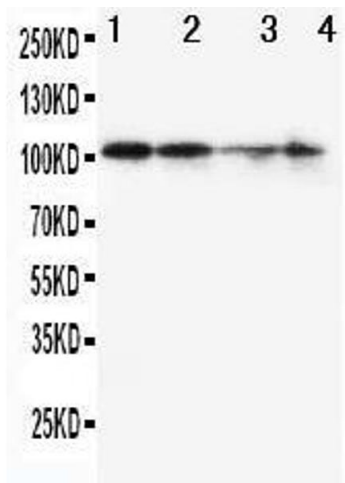
Handling

Format:	Lyophilized
Reconstitution:	Add 0.2 mL of distilled water will yield a concentration of 500 µg/mL.
Concentration:	500 µg/mL
Buffer:	Each vial contains 5 mg BSA, 0.9 mg NaCl, 0.2 mg Na ₂ HPO ₄ , 0.05 mg Thimerosal, 0.05 mg Sodium azide.
Preservative:	Thimerosal (Merthiolate), Sodium azide
Precaution of Use:	This product contains Sodium azide and Thimerosal (Merthiolate): POISONOUS AND HAZARDOUS SUBSTANCES which should be handled by trained staff only.
Handling Advice:	Avoid repeated freezing and thawing.
Storage:	4 °C/-20 °C
Storage Comment:	At -20°C for one year. After reconstitution, at 4°C for one month. It can also be aliquotted and stored frozen at -20 °C for a longer time. Avoid repeated freezing and thawing.



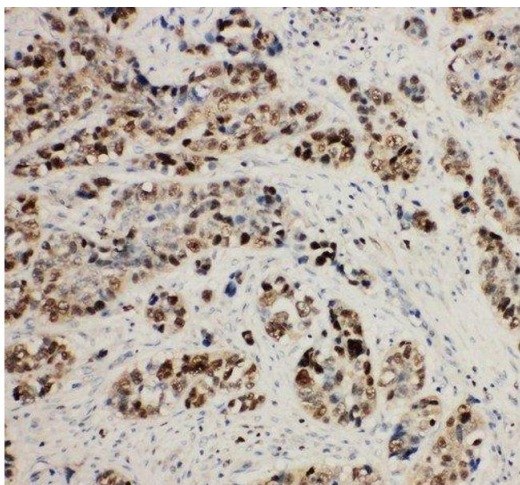
Immunohistochemistry

Image 1. Anti-MCM2 antibody, IHC(P) IHC(P): Human Intestinal Cancer Tissue



Western Blotting

Image 2. Anti-MCM2 antibody, Western blotting Lane 1: SW620 Cell Lysate Lane 2: PANC Cell Lysate Lane 3: JURKAT Cell Lysate Lane 4: HELA Cell Lysate



Immunohistochemistry

Image 3. Anti-MCM2 antibody, IHC(P) IHC(P): Human Lung Cancer Tissue

Please check the [product details page](#) for more images. Overall 5 images are available for ABIN3044242.