

Datasheet for ABIN3044243
anti-MCM3 antibody (N-Term)

6 Images

[Go to Product page](#)

Overview

Quantity:	100 µg
Target:	MCM3
Binding Specificity:	AA 13-27, N-Term
Reactivity:	Human, Mouse, Rat
Host:	Rabbit
Clonality:	Polyclonal
Application:	Western Blotting (WB), Immunohistochemistry (Paraffin-embedded Sections) (IHC (p)), Immunocytochemistry (ICC)

Product Details

Purpose:	Rabbit IgG polyclonal antibody for DNA replication licensing factor MCM3(MCM3) detection. Tested with WB, IHC-P, ICC in Human,Mouse,Rat.
Immunogen:	A synthetic peptide corresponding to a sequence at the N-terminus of human MCM3(13-27aa REAQRDYLDFLDDEE), identical to the related rat and mouse sequences.
Sequence:	REAQRDYLDLDF LDDEE
Isotype:	IgG
Cross-Reactivity (Details):	No cross reactivity with other proteins.
Characteristics:	Rabbit IgG polyclonal antibody for DNA replication licensing factor MCM3(MCM3) detection. Tested with WB, IHC-P, ICC in Human,Mouse,Rat. Gene Name: minichromosome maintenance complex component 3 Protein Name: DNA replication licensing factor MCM3

Product Details

Purification: Immunogen affinity purified.

Target Details

Target: MCM3

Alternative Name: MCM3 ([MCM3 Products](#))

Background: MCM3(MINICHROMOSOME MAINTENANCE, S. CEREVISIAE, HOMOLOG OF, 3), also called RLFB or P1 PROTEIN, is a protein that in humans is encoded by the MCM3 gene. MCM3 is one of the highly conserved mini-chromosome maintenance proteins(MCM) that are involved in the initiation of eukaryotic genome replication. The MCM3 gene is mapped to 6p12.2. This protein is a subunit of the protein complex that consists of MCM2-7. It has been shown to interact directly with MCM5/CDC46. This protein also interacts with, and thus is acetylated by MCM3AP, a chromatin-associated acetyltransferase. The acetylation of this protein inhibits the initiation of DNA replication and cell cycle progression.

Synonyms: Cervical cancer proto oncogene 5 antibody|DNA polymerase alpha holoenzyme associated P1 antibody|DNA polymerase alpha holoenzyme associated protein P1 antibody|DNA polymerase alpha holoenzyme-associated protein P1 antibody|DNA replication factor MCM3 antibody|DNA replication licensing factor MCM3 antibody|HCC 5 antibody|HCC5 antibody|hRlf beta subunit antibody|Human cervical cancer proto oncogene 5 antibody|MCM 3 antibody|mcm3 antibody|MCM3 minichromosome maintenance deficient 3 antibody|MCM3_HUMAN antibody|MGC1157 antibody|Minichromosome maintenance complex component 3 antibody|Minichromosome maintenance deficient 3 antibody|Minichromosome maintenance protein 3 antibody|P1 h antibody|P1 MCM3 antibody|P1 Protein antibody|P1-MCM3 antibody|P1.h antibody|p102 antibody|P102 protein antibody|Replication licensing factor beta subunit antibody|RLF beta subunit antibody|RLF subunit beta antibody|RLFB antibody

UniProt: [P25205](#)

Pathways: [DNA Damage Repair](#), [Mitotic G1-G1/S Phases](#), [DNA Replication](#), [Chromatin Binding](#), [Synthesis of DNA](#)

Application Details

Application Notes: WB: Concentration: 0.1-0.5 µg/mL, Tested Species: Human, Mouse, Rat
IHC-P: Concentration: 0.5-1 µg/mL, Tested Species: Human, Mouse, Rat, Epitope Retrieval by Heat: Boiling the paraffin sections in 10 mM citrate buffer, pH 6.0, for 20 mins is required for the

Application Details

staining of formalin/paraffin sections.

ICC: Concentration: 0.5-1 µg/mL, Tested Species: Human

Notes: Tested Species: Species with positive results. Predicted Species: Species predicted to be fit for the product based on sequence similarities. Other applications have not been tested.

Optimal dilutions should be determined by end users.

Comment: Antibody can be supported by chemiluminescence kit ABIN921124 in WB, supported by ABIN921231 in IHC(P) and ICC.

Restrictions: For Research Use only

Handling

Format: Lyophilized

Reconstitution: Add 0.2 mL of distilled water will yield a concentration of 500 µg/mL.

Concentration: 500 µg/mL

Buffer: Each vial contains 5 mg BSA, 0.9 mg NaCl, 0.2 mg Na₂HPO₄, 0.05 mg Thimerosal, 0.05 mg Sodium azide.

Preservative: Thimerosal (Merthiolate), Sodium azide

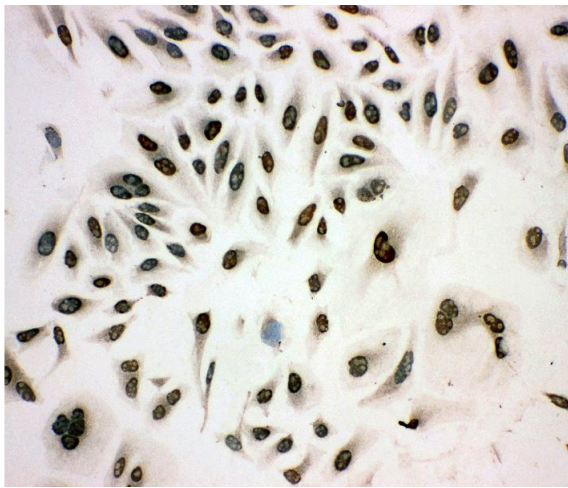
Precaution of Use: This product contains Sodium azide and Thimerosal (Merthiolate): POISONOUS AND HAZARDOUS SUBSTANCES which should be handled by trained staff only.

Handling Advice: Avoid repeated freezing and thawing.

Storage: 4 °C/-20 °C

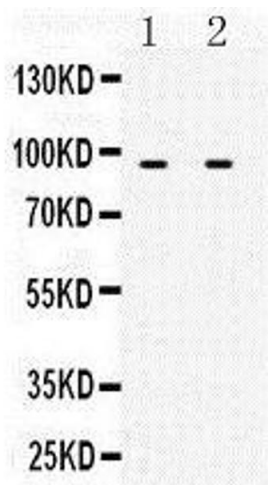
Storage Comment: At -20°C for one year. After reconstitution, at 4°C for one month.
It can also be aliquotted and stored frozen at -20 °C for a longer time. Avoid repeated freezing and thawing.

Expiry Date: 12 months



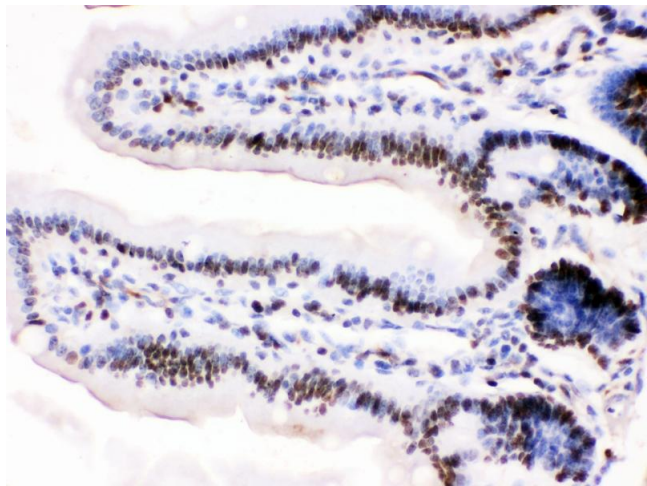
Immunohistochemistry

Image 1. Anti-MCM3 antibody, ICC ICC: HELA Cell



Western Blotting

Image 2. Observed bind size: 91KD



Immunohistochemistry

Image 3. Anti-MCM3 antibody, IHC(P) IHC(P): Mouse Intestine Tissue

Please check the [product details page](#) for more images. Overall 6 images are available for ABIN3044243.