

Datasheet for ABIN3044244  
**anti-MCM5 antibody (C-Term)**



[Go to Product page](#)

2 Images

## Overview

Quantity:	100 µg
Target:	MCM5
Binding Specificity:	AA 720-734, C-Term
Reactivity:	Human, Mouse, Rat
Host:	Rabbit
Clonality:	Polyclonal
Conjugate:	This MCM5 antibody is un-conjugated
Application:	Western Blotting (WB), Immunohistochemistry (IHC), Immunofluorescence (IF), Immunocytochemistry (ICC), Flow Cytometry (FACS)

## Product Details

Purpose:	Anti-MCM5 Antibody Picoband®
Immunogen:	A synthetic peptide corresponding to a sequence at the C-terminus of human MCM5, identical to the related rat and mouse sequences.
Sequence:	EIQHRMQRKV LYRLK
Isotype:	IgG
Cross-Reactivity (Details):	No cross-reactivity with other proteins
Characteristics:	Anti-MCM5 Antibody (ABIN3044244). Tested in Flow Cytometry, IF, IHC, ICC, WB applications. This antibody reacts with Human, Mouse, Rat. The brand Picoband indicates this is a premium antibody that guarantees superior quality, high affinity, and strong signals with minimal background in Western blot applications. Only our best-performing antibodies are designated

## Product Details

as Picoband, ensuring unmatched performance.

Purification: Immunogen affinity purified.

## Target Details

Target: MCM5

Alternative Name: MCM5 ([MCM5 Products](#))

Background: Synonyms: DNA replication licensing factor MCM5,3.6.4.12,CDC46 homolog,P1-CDC46,MCM5,CDC46,  
Tissue Specificity: Heart, liver, duodenum, blood vessels and kidney.  
Background: MCM5 (MINICHROMOSOME MAINTENANCE, S. CEREVISIAE, HOMOLOG OF, 5),also known as CDC46, is a protein that in humans is encoded by the MCM5 gene. MCM5 is structurally very similar to the CDC46 protein from S. cerevisiae, a protein involved in the initiation of DNA replication. And MCM5 is a member of the MCM family of chromatin-binding proteins and can interact with at least two other members of this family. The MCM5 gene is mapped on 22q12.3. The MCM5 gene contains 16 exons. The encoded protein is upregulated in the transition from the G0 to G1/S phase of the cell cycle and may actively participate in cell cycle regulation.  
Sequence Similarities: Belongs to the MCM family.

Molecular Weight: 82 kDa

UniProt: [P33992](#)

Pathways: [DNA Damage Repair](#), [Mitotic G1-G1/S Phases](#), [DNA Replication](#), [Chromatin Binding](#), [Synthesis of DNA](#)

## Application Details

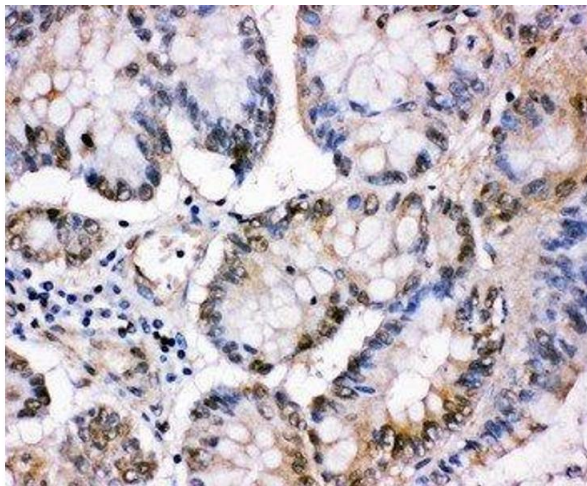
Application Notes: Immunohistochemistry (Paraffin-embedded Section), 0.5-1 µg/mL, Human, Mouse, Rat  
Western blot, 0.1-0.5 µg/mL, Human, Rat, Mouse  
Immunocytochemistry/Immunofluorescence, 2 µg/mL, Human  
Flow Cytometry (Fixed), 1-3 µg/1×10<sup>6</sup> cells, Human  
1. Burkhart, R., Schulte, D., Hu, D., Musahl, C., Gohring, F., Knippers, R. Interactions of human nuclear proteins P1Mcm3 and P1Cdc46. Europ. J. Biochem. 228: 431-438, 1995. 2. Groth, A., Corpet, A., Cook, A. J. L., Roche, D., Bartek, J., Lukas, J., Almouzni, G. Regulation of replication fork progression through histone supply and demand. Science 318: 1928-1931, 2007. 3. Paul R, Hu B, Musahl C, Hameister H, Knippers R (Sep 1996). "Coding sequence and chromosome

## Application Details

	mapping of the human gene (CDC46) for replication protein hCdc46/Mcm5". Cytogenet Cell Genet 73 (4): 317-21.
Comment:	Antibody can be supported by chemiluminescence kit ABIN921124 in WB, supported by ABIN921231 in IHC(P).
Restrictions:	For Research Use only

## Handling

Format:	Lyophilized
Reconstitution:	Add 0.2 mL of distilled water will yield a concentration of 500 µg/mL.
Concentration:	500 µg/mL
Buffer:	Each vial contains 5 mg BSA, 0.9 mg NaCl, 0.2 mg Na <sub>2</sub> HPO <sub>4</sub> , 0.05 mg Thimerosal, 0.05 mg Sodium azide.
Preservative:	Thimerosal (Merthiolate), Sodium azide
Precaution of Use:	This product contains Thimerosal (Merthiolate) and Sodium azide: POISONOUS AND HAZARDOUS SUBSTANCES which should be handled by trained staff only.
Handling Advice:	Avoid repeated freezing and thawing.
Storage:	4 °C, -20 °C
Storage Comment:	Store at -20°C for one year from date of receipt. After reconstitution, at 4°C for one month. It can also be aliquotted and stored frozen at -20°C for six months. Avoid repeated freeze-thaw cycles.
Expiry Date:	12 months



#### Immunohistochemistry

**Image 1.** Anti-MCM5 antibody, IHC(P) IHC(P): Human Intestinal Cancer Tissue



#### Western Blotting

**Image 2.** Anti-MCM5 antibody, Western blotting Lane 1: Rat Testis Tissue Lysate Lane 2: Rat Brain Tissue Lysate Lane3: JURKAT Cell Lysate