

Datasheet for ABIN3044254  
**anti-SLC10A1 antibody (Middle Region)**

## 3 Images

[Go to Product page](#)

## Overview

Quantity:	100 µg
Target:	SLC10A1
Binding Specificity:	AA 141-154, Middle Region
Reactivity:	Human, Rat
Host:	Rabbit
Clonality:	Polyclonal
Application:	Western Blotting (WB), Immunohistochemistry (Paraffin-embedded Sections) (IHC (p))

## Product Details

Purpose:	Rabbit IgG polyclonal antibody for Sodium/bile acid cotransporter(SLC10A1) detection. Tested with WB, IHC-P in Human,Mouse,Rat.
Immunogen:	A synthetic peptide corresponding to a sequence in the middle region of human SLC10A1(141-154aa YSRGIYDGDLDKDV), different from the related rat and mouse sequences by one amino acid.
Sequence:	YSRGIYDGDLDKDV
Isotype:	IgG
Cross-Reactivity (Details):	<p>Predicted Cross Reactivity: mouse</p> <p>No cross reactivity with other proteins.</p> <p>Predicted Cross Reactivity: Species predicted to be fit for the product based on sequence similarities.</p>
Characteristics:	Rabbit IgG polyclonal antibody for Sodium/bile acid cotransporter(SLC10A1) detection. Tested

## Product Details

with WB, IHC-P in Human, Mouse, Rat.

Gene Name: solute carrier family 10(sodium/bile acid cotransporter family), member 1

Protein Name: Sodium/bile acid cotransporter

Purification: Immunogen affinity purified.

## Target Details

Target: SLC10A1

Alternative Name: SLC10A1 ([SLC10A1 Products](#))

Background: Na<sup>+</sup>-taurocholate cotransporting polypeptide (NTCP), also known as SLC10A1 (Solute carrier family 10, member 1), is the major bile acid uptake system in human hepatocytes. NTCP and the ileal transporter ASBT (apical sodium-dependent bile acid transporter) are two sodium-dependent transporters critical for the enterohepatic circulation of bile acids. The hASBT gene is known to be activated by the glucocorticoid receptor (GR). Ho RH et al. indicates functionally important polymorphisms in NTCP exist and that the like lihood of being carriers of such polymorphisms is dependent on ethnicity.

Synonyms: Cell growth-inhibiting gene 29 protein antibody|Growth inhibiting protein 29 antibody|Na/bile acid cotransporter antibody|Na/taurocholate transport protein antibody|Na(+)/bile acid cotransporter antibody|Na(+)/taurocholate transport protein antibody|Na/taurocholate cotransporting polypeptide antibody|NTCP antibody|NTCP\_HUMAN antibody|NTCP1 antibody|SLC10A1 antibody|Sodium/bile acid cotransporter antibody|Sodium/taurocholate cotransporter antibody|Sodium/taurocholate cotransporting polypeptide antibody|Solute carrier family 10(sodium/bile acid cotransporter family) member 1 antibody|Solute carrier family 10 member 1 antibody

UniProt: [Q14973](#)

## Application Details

Application Notes: WB: Concentration: 0.1-0.5 µg/mL, Tested Species: Rat, Predicted Species: Human, Mouse  
IHC-P: Concentration: 0.5-1 µg/mL, Tested Species: Human, Rat, Predicted Species: Mouse,  
Epitope Retrieval by Heat: Boiling the paraffin sections in 10 mM citrate buffer, pH 6.0, for 20 mins is required for the staining of formalin/paraffin sections.  
Notes: Tested Species: Species with positive results. Predicted Species: Species predicted to be fit for the product based on sequence similarities. Other applications have not been tested.

## Application Details

Optimal dilutions should be determined by end users.

Comment: Antibody can be supported by chemiluminescence kit ABIN921124 in WB, supported by ABIN921231 in IHC(P).

Restrictions: For Research Use only

## Handling

Format: Lyophilized

Reconstitution: Add 0.2 mL of distilled water will yield a concentration of 500 µg/mL.

Concentration: 500 µg/mL

Buffer: Each vial contains 5 mg BSA, 0.9 mg NaCl, 0.2 mg Na<sub>2</sub>HPO<sub>4</sub>, 0.05 mg Thimerosal, 0.05 mg Sodium azide.

Preservative: Thimerosal (Merthiolate), Sodium azide

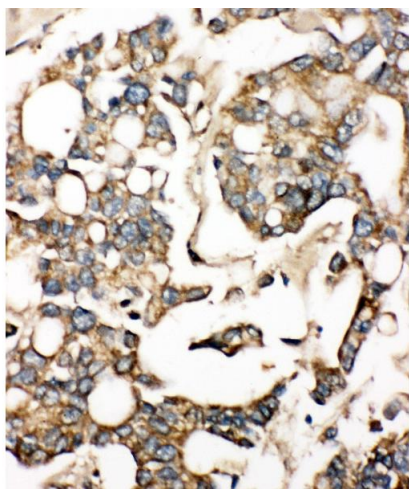
Precaution of Use: This product contains Sodium azide and Thimerosal (Merthiolate): POISONOUS AND HAZARDOUS SUBSTANCES which should be handled by trained staff only.

Handling Advice: Avoid repeated freezing and thawing.

Storage: 4 °C/-20 °C

Storage Comment: At -20°C for one year. After reconstitution, at 4°C for one month.  
It can also be aliquotted and stored frozen at -20 °C for a longer time. Avoid repeated freezing and thawing.

Expiry Date: 12 months



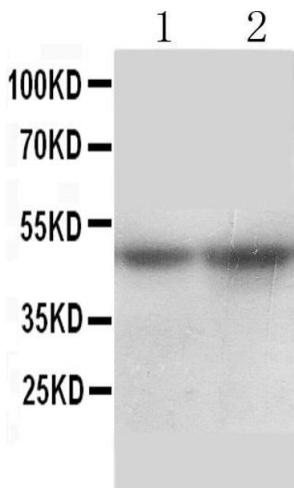
#### Immunohistochemistry

**Image 1.** Anti-SLC10A1 antibody, IHC(P) IHC(P): Human Liver Cancer Tissue



#### Western Blotting

**Image 2.** Anti-SLC10A1 antibody, Western blotting All lanes: Anti SLC10A1 at 0.5ug/ml Lane 1: Rat Liver Tissue Lysate at 50ug Lane 1: Rat Brain Tissue Lysate at 50ug Predicted bind size: 39KD Observed bind size: 39KD



#### Western Blotting

**Image 3.** Anti-SLC10A1 antibody, Western blottingAll lanes: Anti SLC10A1 at 0.5ug/ml Lane 1: Rat Liver Tissue Lysate at 50ug Lane 2: Mouse Liver Tissue Lysate at 50ug Predicted bind size: 38-56KD Observed bind size: 49KD