



Datasheet for ABIN3044267
anti-XRCC3 antibody (C-Term)



[Go to Product page](#)

2 Images

Overview

Quantity:	100 µg
Target:	XRCC3
Binding Specificity:	AA 290-305, C-Term
Reactivity:	Mouse, Rat
Host:	Rabbit
Clonality:	Polyclonal
Conjugate:	This XRCC3 antibody is un-conjugated
Application:	Western Blotting (WB), Immunohistochemistry (Paraffin-embedded Sections) (IHC (p))

Product Details

Purpose:	Rabbit IgG polyclonal antibody for DNA repair protein XRCC3(XRCC3) detection. Tested with WB, IHC-P in Mouse,Rat.
Immunogen:	A synthetic peptide corresponding to a sequence at the C-terminus of mouse XRCC3(290-305aa NQLLMRLMVDRTHEDD), identical to the related rat sequence.
Sequence:	NQLLMRLMVD RTHEDD
Isotype:	IgG
Cross-Reactivity (Details):	No cross reactivity with other proteins.
Characteristics:	Rabbit IgG polyclonal antibody for DNA repair protein XRCC3(XRCC3) detection. Tested with WB, IHC-P in Mouse,Rat. Gene Name: X-ray repair complementing defective repair in Chinese hamster cells 3 Protein Name: DNA repair protein XRCC3

Product Details

Purification: Immunogen affinity purified.

Target Details

Target: XRCC3

Alternative Name: XRCC3 ([XRCC3 Products](#))

Background: XRCC3(X-RAY REPAIR, COMPLEMENTING DEFECTIVE, IN CHINESE HAMSTER, 3) is a DNA repair protein that in humans, is encoded by the XRCC3 gene. The XRCC3 is a member of the RecA/Rad51-related protein family that participates in homologous recombination to maintain chromosome stability and repair DNA damage. XRCC3 interacts directly with RAD51 and may cooperate with RAD51 during recombinational repair. XRCC3 function is not limited to HR initiation, but extends to later stages in formation and resolution of HR intermediates, possibly by stabilizing heteroduplex DNA. The gene functionally complements Chinese hamster irs1SF, a repair-deficient mutant that exhibits hypersensitivity to a number of different DNA-damaging agents and is chromosomally unstable. A rare microsatellite polymorphism in this gene is associated with cancer in patients of varying radiosensitivity.

Synonyms: CMM6 antibody|DNA repair protein XRCC3 antibody|RAD51 like antibody|X ray repair complementing defective repair in Chinese hamster antibody|X ray repair complementing defective repair in Chinese hamster cells 3 antibody|X ray repair cross complementing protein 3 antibody|X-ray repair cross-complementing protein 3 antibody|XRCC 3 antibody|XRCC3 antibody|XRCC3_HUMAN antibody

Pathways: [DNA Damage Repair](#)

Application Details

Application Notes: WB: Concentration: 0.1-0.5 µg/mL, Tested Species: Mouse, Predicted Species: Rat
IHC-P: Concentration: 0.5-1 µg/mL, Tested Species: Rat, Predicted Species: Mouse, Epitope Retrieval by Heat: Boiling the paraffin sections in 10 mM citrate buffer, pH 6.0, for 20 mins is required for the staining of formalin/paraffin sections.
Notes: Tested Species: Species with positive results. Predicted Species: Species predicted to be fit for the product based on sequence similarities. Other applications have not been tested.
Optimal dilutions should be determined by end users.

Comment: Antibody can be supported by chemiluminescence kit ABIN921124 in WB, supported by ABIN921231 in IHC(P).

Application Details

Restrictions: For Research Use only

Handling

Format: Lyophilized

Reconstitution: Add 0.2 mL of distilled water will yield a concentration of 500 µg/mL.

Concentration: 500 µg/mL

Buffer: Each vial contains 5 mg BSA, 0.9 mg NaCl, 0.2 mg Na₂HPO₄, 0.05 mg Thimerosal, 0.05 mg Sodium azide.

Preservative: Thimerosal (Merthiolate), Sodium azide

Precaution of Use: This product contains Sodium azide and Thimerosal (Merthiolate): POISONOUS AND HAZARDOUS SUBSTANCES which should be handled by trained staff only.

Handling Advice: Avoid repeated freezing and thawing.

Storage: 4 °C/-20 °C

Storage Comment: At -20°C for one year. After reconstitution, at 4°C for one month.
It can also be aliquotted and stored frozen at -20 °C for a longer time. Avoid repeated freezing and thawing.

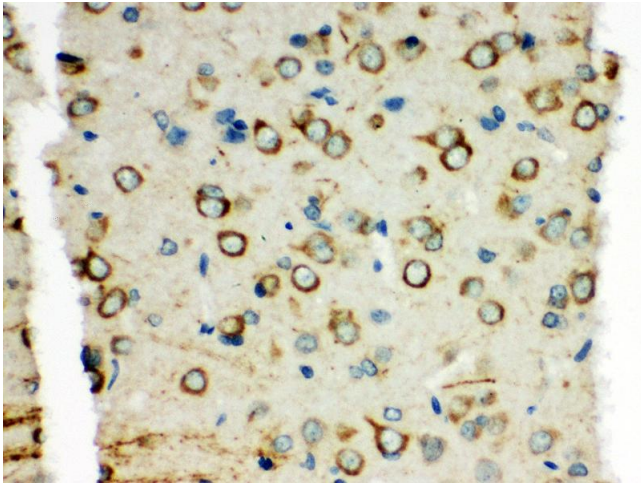
Expiry Date: 12 months

Images



Western Blotting

Image 1. Anti-XRCC3 antibody, Western blotting All lanes: Anti XRCC3 at 0.5ug/ml WB: Mouse Brain Tissue Lysate at 50ug Predicted bind size: 38KD Observed bind size: 38KD



Immunohistochemistry

Image 2. Anti-XRCC3 antibody, IHC(P) IHC(P): Rat Brain Tissue