

Datasheet for ABIN3044276

**anti-PEBP1 antibody (N-Term)****2** Images[Go to Product page](#)

## Overview

Quantity:	100 µg
Target:	PEBP1
Binding Specificity:	AA 15-29, N-Term
Reactivity:	Mouse, Rat
Host:	Rabbit
Clonality:	Polyclonal
Conjugate:	This PEBP1 antibody is un-conjugated
Application:	Western Blotting (WB), Immunohistochemistry (IHC)

## Product Details

Purpose:	Anti-PBP/PEBP1 Antibody Picoband®
Immunogen:	A synthetic peptide corresponding to a sequence at the N-terminus of mouse PBP, identical to the related rat sequence.
Sequence:	QEVDEPPQHA LRVDY
Isotype:	IgG
Cross-Reactivity (Details):	No cross-reactivity with other proteins
Characteristics:	Anti-PBP/PEBP1 Antibody (ABIN3044276). Tested in IHC, WB applications. This antibody reacts with Mouse, Rat. The brand Picoband indicates this is a premium antibody that guarantees superior quality, high affinity, and strong signals with minimal background in Western blot applications. Only our best-performing antibodies are designated as Picoband, ensuring unmatched performance.

## Product Details

Purification: Immunogen affinity purified.

## Target Details

Target: PEBP1

Alternative Name: PEBP1 ([PEBP1 Products](#))

Background: Synonyms: Phosphatidylethanolamine-binding protein 1,PEBP-1,HCNPpp,Hippocampal cholinergic neurostimulating peptide,HCNP,Pebp1,Pbp, Pebp,  
Tissue Specificity: HCNP is expressed in brain. Increased expression in aged senescence-accelerated mice.  
Background: PEBP1 (Phosphatidylethanolamine-binding protein 1), also called PBP, RKIP, inhibits the phosphorylation and activation of MEK by RAF1. PEBP1 is identical to the phosphatidylethanolamine-binding protein (PBP) with a relative molecular mass of 23 kD. The PEBP1 gene is mapped on 12q24.23. PEBP1 coimmunoprecipitates with RAF1 and MEK from cell lysates and colocalizes with RAF1 when examined by confocal microscopy. PEBP1 overexpression interferes with the activation of MEK and ERK, induction of AP1-dependent reporter genes, and transformation elicited by an oncogenically activated RAF1 kinase. PEBP1 expression was rapidly upregulated during induction of chemotherapy-triggered apoptosis in human prostate and breast cancer cell lines, and maximal RKIP expression correlated perfectly with the onset of apoptosis by Chatterjee et al (2004). RKIP depletion decreased the mitotic index, the number of metaphase cells, traversal times from nuclear envelope breakdown to anaphase, and an override of mitotic checkpoints induced by spindle poisons.  
Sequence Similarities: Belongs to the MCM family.

Molecular Weight: 21 kDa

UniProt: [P70296](#)

Pathways: [Feeding Behaviour](#)

## Application Details

Application Notes: Immunohistochemistry (Paraffin-embedded Section), 0.5-1 µg/mL, Rat  
Western blot, 0.1-0.5 µg/mL, Mouse, Rat  
1. Chatterjee, D., Bai, Y., Wang, Z., Beach, S., Mott, S., Roy, R., Braastad, C., Sun, Y., Mukhopadhyay, A., Aggarwal, B. B., Darnowski, J., Pantazis, P., Wyche, J., Fu, Z., Kitagwa, Y., Keller, E. T., Sedivy, J. M., Yeung, K. C. RKIP sensitizes prostate and breast cancer cells to drug-induced apoptosis. J. Biol. Chem. 279: 17515-17523, 2004. 2. Hengst, U., Albrecht, H., Hess, D.,

## Application Details

Monard, D. The phosphatidylethanolamine-binding protein is the prototype of a novel family of serine protease inhibitors. J. Biol. Chem. 276: 535-540, 2001. 3. Yeung, K., Seitz, T., Li, S., Janosch, P., McFerran, B., Kaiser, C., Fee, F., Katsanakis, K. D., Rose, D. W., Mischak, H., Sedivy, J. M., Kolch, W. Suppression of Raf-1 kinase activity and MAP kinase signalling by RKIP. Nature 401: 173-177, 1999.

Comment: Antibody can be supported by chemiluminescence kit ABIN921124 in WB, supported by ABIN921231 in IHC(P).

Restrictions: For Research Use only

## Handling

Format: Lyophilized

Reconstitution: Add 0.2 mL of distilled water will yield a concentration of 500 µg/mL.

Concentration: 500 µg/mL

Buffer: Each vial contains 5 mg BSA, 0.9 mg NaCl, 0.2 mg Na<sub>2</sub>HPO<sub>4</sub>, 0.05 mg Thimerosal, 0.05 mg Sodium azide.

Preservative: Thimerosal (Merthiolate), Sodium azide

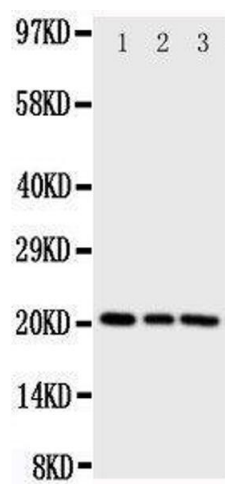
Precaution of Use: This product contains Thimerosal (Merthiolate) and Sodium azide: POISONOUS AND HAZARDOUS SUBSTANCES which should be handled by trained staff only.

Handling Advice: Avoid repeated freezing and thawing.

Storage: 4 °C, -20 °C

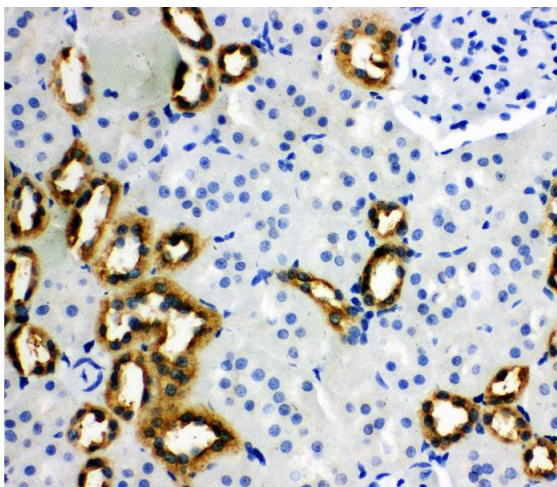
Storage Comment: Store at -20°C for one year from date of receipt. After reconstitution, at 4°C for one month. It can also be aliquotted and stored frozen at -20°C for six months. Avoid repeated freeze-thaw cycles.

Expiry Date: 12 months



Western Blotting

Image 1.



Immunohistochemistry

Image 2. Anti-PBP antibody, IHC(P) IHC(P): Rat Kidney Tissue