

Datasheet for ABIN3044277

anti-P-Selectin antibody (N-Term)



[Go to Product page](#)

3 Images

Overview

Quantity:	100 µg
Target:	P-Selectin (SELP)
Binding Specificity:	AA 49-66, N-Term
Reactivity:	Human
Host:	Rabbit
Clonality:	Polyclonal
Conjugate:	This P-Selectin antibody is un-conjugated
Application:	Western Blotting (WB), Immunohistochemistry (IHC)

Product Details

Purpose:	Anti-CD62P/SELP Antibody Picoband®
Immunogen:	A synthetic peptide corresponding to a sequence at the N-terminus of human CD62P.
Sequence:	KAYSWNISRK YCQNRD
Isotype:	IgG
Cross-Reactivity (Details):	No cross-reactivity with other proteins
Characteristics:	Anti-CD62P/SELP Antibody (ABIN3044277). Tested in IHC, WB applications. This antibody reacts with Human. The brand Picoband indicates this is a premium antibody that guarantees superior quality, high affinity, and strong signals with minimal background in Western blot applications. Only our best-performing antibodies are designated as Picoband, ensuring unmatched performance.

Product Details

Purification: Immunogen affinity purified.

Target Details

Target: P-Selectin (SELP)

Alternative Name: SELP ([SELP Products](#))

Background: Synonyms: P-selectin, CD62 antigen-like family member P, Granule membrane protein 140, GMP-140, Leukocyte-endothelial cell adhesion molecule 3, LECAM3, Platelet activation dependent granule-external membrane protein, PADGEM, CD62P, SELP, GMRP, GRMP,
Tissue Specificity: Stored in the alpha-granules of platelets and Weibel-Palade bodies of endothelial cells. Upon cell activation by agonists, P-selectin is transported rapidly to the cell surface.
Background: P-Selectin, also called CD62, GRMP, GMP140 is a 140-kD adhesion molecule, expressed at the surface of activated cells, that mediates the interaction of activated endothelial cells or platelets with leukocytes. The P-Selectin gene is mapped on 1q24.2. P-selectin plays an essential role in the initial recruitment of leukocytes (white blood cells) to the site of injury during inflammation. P-selectin is also very important in the recruitment and aggregation of platelets at areas of vascular injury. In quiescent platelet, P-selectin is located on the inner wall of alpha-granules. Sorting nexin-17 interacts with the cytosolic domain of P-selectin and suggested that SNX17 may function in the intracellular trafficking of P-selectin. P-selectin expression was found to be significantly and positively correlated with carotid artery stiffness and wall thickness, and the percentage of P-selectin-positive platelets was significantly higher in patients with carotid plaque.
Sequence Similarities: Belongs to the selectin/LECAM family.

Molecular Weight: 140 kDa

UniProt: [P16109](#)

Application Details

Application Notes: Immunohistochemistry (Paraffin-embedded Section), 0.5-1 µg/mL, Human
Western blot, 0.1-0.5 µg/mL, Human
1. Burger, P. C., Wagner, D. D. Platelet P-selectin facilitates atherosclerotic lesion development. Blood 101: 2661-2666, 2003. 2. Florian, V., Schluter, T., Bohnensack, R. A new member of the sorting nexin family interacts with the C-terminus of P-selectin. Biochem. Biophys. Res. Commun. 281: 1045-1050, 2001. 3. Hillis, G. S., Terregino, C., Taggart, P., Killian, A., Zhao, N.,

Application Details

Dalsey, W. C., Mangione, A. Elevated soluble P-selectin levels are associated with an increased risk of early adverse effects in patients with presumed myocardial ischemia. Am. Heart J. 143: 235-241, 2002.

Comment: Antibody can be supported by chemiluminescence kit ABIN921124 in WB, supported by ABIN921231 in IHC(P).

Restrictions: For Research Use only

Handling

Format: Lyophilized

Reconstitution: Add 0.2 mL of distilled water will yield a concentration of 500 µg/mL.

Concentration: 500 µg/mL

Buffer: Each vial contains 5 mg BSA, 0.9 mg NaCl, 0.2 mg Na₂HPO₄, 0.05 mg Thimerosal, 0.05 mg Sodium azide.

Preservative: Thimerosal (Merthiolate), Sodium azide

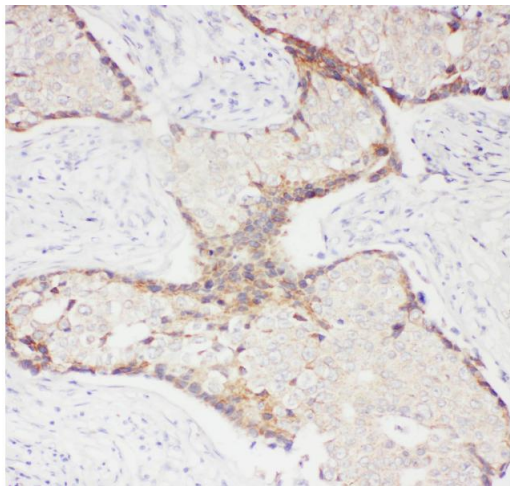
Precaution of Use: This product contains Thimerosal (Merthiolate) and Sodium azide: POISONOUS AND HAZARDOUS SUBSTANCES which should be handled by trained staff only.

Handling Advice: Avoid repeated freezing and thawing.

Storage: 4 °C, -20 °C

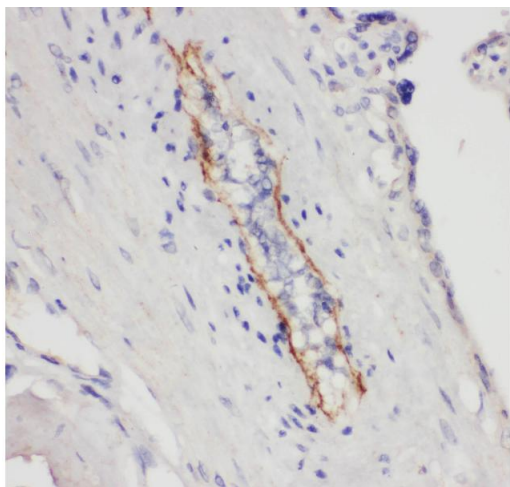
Storage Comment: Store at -20°C for one year from date of receipt. After reconstitution, at 4°C for one month. It can also be aliquotted and stored frozen at -20°C for six months. Avoid repeated freeze-thaw cycles.

Expiry Date: 12 months



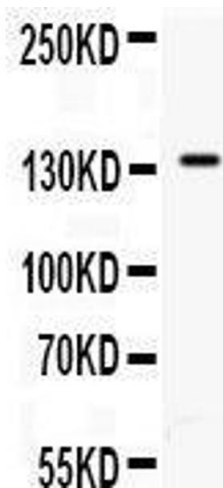
Immunohistochemistry

Image 1. Anti- CD62P antibody, IHC(P) IHC(P): Human Mammary Cancer Tissue



Immunohistochemistry

Image 2. Anti- CD62P antibody, IHC(P) IHC(P): Human Placenta Tissue



Western Blotting

Image 3. Anti- CD62P antibody, Western blotting All lanes: Anti CD62P at 0.5ug/ml WB: PANC Whole Cell Lysate at 40ug Predicted bind size: 91KD Observed bind size: 140KD