

Datasheet for ABIN3044281
anti-SLC6A1 antibody (C-Term)[Go to Product page](#)

2 Images

1 Publication

Overview

Quantity:	100 µg
Target:	SLC6A1 (GAT1)
Binding Specificity:	AA 473-487, C-Term
Reactivity:	Rat, Mouse
Host:	Rabbit
Clonality:	Polyclonal
Application:	Western Blotting (WB), Immunohistochemistry (Paraffin-embedded Sections) (IHC (p))

Product Details

Purpose:	Rabbit IgG polyclonal antibody for Sodium- and chloride-dependent GABA transporter 1(SLC6A1) detection. Tested with WB, IHC-P in Human,Mouse,Rat.
Immunogen:	A synthetic peptide corresponding to a sequence at the C-terminus of human GABA Transporter 1(473-487aa WFYGVNRFYDNIQEM), identical to the related rat and mouse sequences.
Sequence:	WFYGVNRFYD NIQEM
Isotype:	IgG
Cross-Reactivity (Details):	<p>Predicted Cross Reactivity: human</p> <p>No cross reactivity with other proteins.</p> <p>Predicted Cross Reactivity: Species predicted to be fit for the product based on sequence similarities.</p>
Characteristics:	Rabbit IgG polyclonal antibody for Sodium- and chloride-dependent GABA transporter

Product Details

1(SLC6A1) detection. Tested with WB, IHC-P in Human,Mouse,Rat.

Gene Name: solute carrier family 6(neurotransmitter transporter, GABA), member 1

Protein Name: Sodium- and chloride-dependent GABA transporter 1(GAT-1)

Purification: Immunogen affinity purified.

Target Details

Target: SLC6A1 (GAT1)

Alternative Name: SLC6A1 ([GAT1 Products](#))

Background: GABA transporter 1 (GAT1), also known as sodium- and chloride-dependent GABA transporter 1, is a protein that in humans is encoded by the SLC6A1 gene. GABA Transporter 1 uses Na⁺ and Cl⁻ to create a gradient, which removes or adds GABA to extracellular spaces in the cerebrum and cerebellum. The stoichiometry for GABA Transporter 1 is 2 Na⁺: 1 Cl⁻: 1 GABA. The activity of GAT1 is largely dependent on the presence of Na⁺, while Cl⁻ assists by increasing the ability for GAT-1 to uptake GABA.

Synonyms: GABATHG antibody|GABATR antibody|GABT 1 antibody|GABT1 antibody|GAT-1 antibody|GAT1 antibody|SC6A1_HUMAN antibody|SLC6A1 antibody|Sodium and chloride dependent GABA transporter 1 antibody|Sodium- and chloride-dependent GABA transporter 1 antibody|Solute carrier family 6(neurotransmitter transporter GABA) member 1 antibody|Solute carrier family 6 member 1 antibody

UniProt: [P30531](#)

Application Details

Application Notes: WB: Concentration: 0.1-0.5 µg/mL, Tested Species: Mouse, Rat, Predicted Species: Human
IHC-P: Concentration: 0.5-1 µg/mL, Tested Species: Rat, Predicted Species: Human, Mouse ,
Epitope Retrieval by Heat: Boiling the paraffin sections in 10 mM citrate buffer, pH 6.0, for 20 mins is required for the staining of formalin/paraffin sections.
Notes: Tested Species: Species with positive results. Predicted Species: Species predicted to be fit for the product based on sequence similarities. Other applications have not been tested.
Optimal dilutions should be determined by end users.

Comment: Antibody can be supported by chemiluminescence kit ABIN921124 in WB, supported by ABIN921231 in IHC(P).

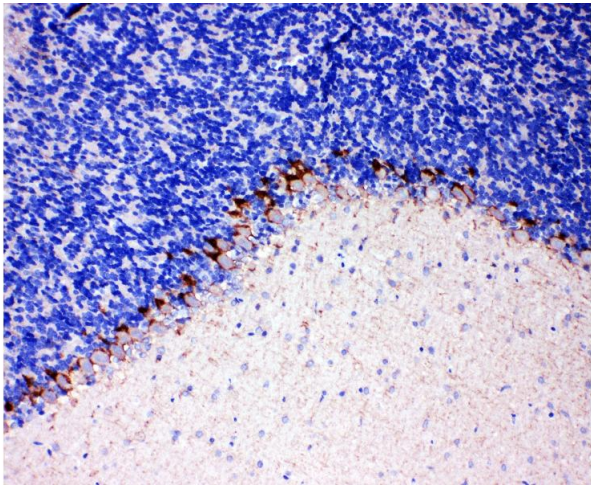
Restrictions: For Research Use only

Handling

Format:	Lyophilized
Reconstitution:	Add 0.2 mL of distilled water will yield a concentration of 500 µg/mL.
Concentration:	500 µg/mL
Buffer:	Each vial contains 5 mg BSA, 0.9 mg NaCl, 0.2 mg Na ₂ HPO ₄ , 0.05 mg Thimerosal, 0.05 mg Sodium azide.
Preservative:	Thimerosal (Merthiolate), Sodium azide
Precaution of Use:	This product contains Sodium azide and Thimerosal (Merthiolate): POISONOUS AND HAZARDOUS SUBSTANCES which should be handled by trained staff only.
Handling Advice:	Avoid repeated freezing and thawing.
Storage:	4 °C/-20 °C
Storage Comment:	At -20°C for one year. After reconstitution, at 4°C for one month. It can also be aliquotted and stored frozen at -20 °C for a longer time. Avoid repeated freezing and thawing.
Expiry Date:	12 months

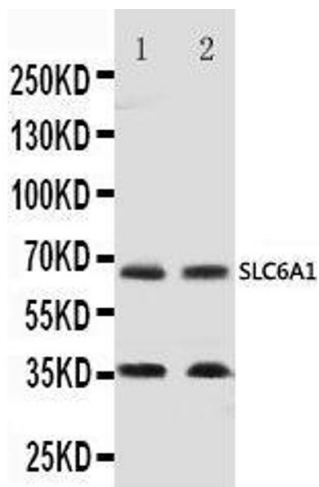
Publications

Product cited in:	Whiteland, Nicholls, Shimeld, Easty, Williams, Hill: "Immunohistochemical detection of T-cell subsets and other leukocytes in paraffin-embedded rat and mouse tissues with monoclonal antibodies." in: The journal of histochemistry and cytochemistry : official journal of the Histochemistry Society , Vol. 43, Issue 3, pp. 313-20, (1995) (PubMed).
-------------------	---



Immunohistochemistry

Image 1. Anti-GABA Transporter 1/GAT 1 antibody, IHC(P)
IHC(P): Rat Brain Tissue



Western Blotting

Image 2. Anti-GABA Transporter 1/GAT 1 antibody, Western blotting
Lane 1: Rat Brain Tissue Lysate
Lane 2: Mouse Brain Tissue Lysate