

Datasheet for ABIN3044283  
**anti-ABCB6 antibody (C-Term)**

## 2 Images

[Go to Product page](#)

## Overview

Quantity:	100 µg
Target:	ABCB6
Binding Specificity:	AA 818-842, C-Term
Reactivity:	Human
Host:	Rabbit
Clonality:	Polyclonal
Conjugate:	This ABCB6 antibody is un-conjugated
Application:	Western Blotting (WB), Immunohistochemistry (Paraffin-embedded Sections) (IHC (p)), Immunocytochemistry (ICC)

## Product Details

Purpose:	Rabbit IgG polyclonal antibody for ATP-binding cassette sub-family B member 6, mitochondrial(ABCB6) detection. Tested with WB, IHC-P, ICC in Human.
Immunogen:	A synthetic peptide corresponding to a sequence at the C-terminus of human ABCB6(818-842aa YADMWQLQQGQEETSEDTKPQTMR).
Sequence:	YADMWQLQQG QEETSEDTKP QTMR
Isotype:	IgG
Cross-Reactivity (Details):	No cross reactivity with other proteins.
Characteristics:	Rabbit IgG polyclonal antibody for ATP-binding cassette sub-family B member 6, mitochondrial(ABCB6) detection. Tested with WB, IHC-P, ICC in Human. Gene Name: ATP-binding cassette, sub-family B(MDR/TAP), member 6

## Product Details

Protein Name: ATP-binding cassette sub-family B member 6, mitochondrial

Purification: Immunogen affinity purified.

## Target Details

Target: ABCB6

Alternative Name: ABCB6 ([ABCB6 Products](#))

Background: ABCB6, ATP-binding cassette sub-family B member 6, mitochondrial is a protein that in humans is encoded by the ABCB6 gene. The membrane-associated protein encoded by this gene is a member of the superfamily of ATP-binding cassette(ABC) transporters. ABC proteins transport various molecules across extra- and intra-cellular membranes. ABC genes are divided into seven distinct subfamilies(ABC1, MDR/TAP, MRP, ALD, OABP, GCN20, White). This protein is a member of the MDR/TAP subfamily. Members of the MDR/TAP subfamily are involved in multidrug resistance as well as antigen presentation. This half-transporter likely plays a role in mitochondrial function. Localized to 2q26, this gene is considered a candidate gene for lethal neonatal metabolic syndrome, a disorder of mitochondrial function.

Synonyms: ABC antibody|ABC transporter umat antibody|ABC14 antibody|Abcb6 antibody|ABCB6\_HUMAN antibody|ATP binding cassette sub family B member 6, mitochondrial precursor antibody|ATP binding cassette, sub family B(MDR/TAP), member 6 antibody|ATP-binding cassette sub-family B member 6 antibody|Mitochondrial ABC transporter 3 antibody|mitochondrial antibody|Mt ABC transporter 3 antibody|Mt-ABC transporter 3 antibody|MTABC3 antibody|P glycoprotein related protein antibody|P-glycoprotein-related protein antibody|PRP antibody|Ubiquitously expressed mammalian ABC half transporter antibody|Ubiquitously-expressed mammalian ABC half transporter antibody|UMAT antibody

Pathways: [Transition Metal Ion Homeostasis](#)

## Application Details

Application Notes: WB: Concentration: 0.1-0.5 µg/mL, Tested Species: Human  
IHC-P: Concentration: 0.5-1 µg/mL, Tested Species: Human, Epitope Retrieval by Heat: Boiling the paraffin sections in 10 mM citrate buffer, pH 6.0, for 20 mins is required for the staining of formalin/paraffin sections.  
ICC: Concentration: 0.5-1 µg/mL, Tested Species: Human  
Notes: Tested Species: Species with positive results. Predicted Species: Species predicted to be

## Application Details

fit for the product based on sequence similarities. Other applications have not been tested.  
Optimal dilutions should be determined by end users.

Comment: Antibody can be supported by chemiluminescence kit ABIN921124 in WB, supported by ABIN921231 in IHC(P) and ICC.

Restrictions: For Research Use only

## Handling

Format: Lyophilized

Reconstitution: Add 0.2 mL of distilled water will yield a concentration of 500 µg/mL.

Concentration: 500 µg/mL

Buffer: Each vial contains 5 mg BSA, 0.9 mg NaCl, 0.2 mg Na<sub>2</sub>HPO<sub>4</sub>, 0.05 mg Thimerosal, 0.05 mg Sodium azide.

Preservative: Thimerosal (Merthiolate), Sodium azide

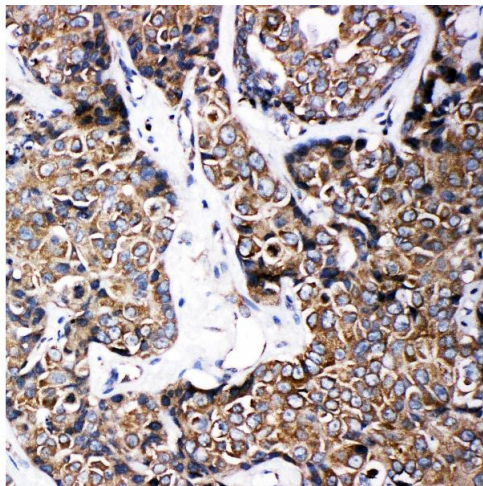
Precaution of Use: This product contains Sodium azide and Thimerosal (Merthiolate): POISONOUS AND HAZARDOUS SUBSTANCES which should be handled by trained staff only.

Handling Advice: Avoid repeated freezing and thawing.

Storage: 4 °C/-20 °C

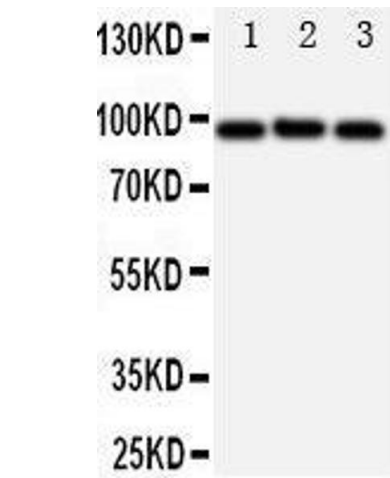
Storage Comment: At -20°C for one year. After reconstitution, at 4°C for one month.  
It can also be aliquotted and stored frozen at -20 °C for a longer time. Avoid repeated freezing and thawing.

Expiry Date: 12 months



#### Immunohistochemistry

**Image 1.** Anti-ABCB6 antibody, IHC(P) IHC(P): Human Mammary Cancer Tissue



#### Western Blotting

**Image 2.**