

Datasheet for ABIN3044285
anti-PAK6 antibody (N-Term)

2 Images

[Go to Product page](#)

Overview

Quantity:	100 µg
Target:	PAK6
Binding Specificity:	AA 16-32, N-Term
Reactivity:	Human, Rat
Host:	Rabbit
Clonality:	Polyclonal
Conjugate:	This PAK6 antibody is un-conjugated
Application:	Western Blotting (WB), Immunohistochemistry (Paraffin-embedded Sections) (IHC (p))

Product Details

Purpose:	Rabbit IgG polyclonal antibody for Serine/threonine-protein kinase PAK 6(PAK6) detection. Tested with WB, IHC-P in Human,Rat,Mouse.
Immunogen:	A synthetic peptide corresponding to a sequence at the N-terminus of human PAK6(16-32aa QNFQHRVHTSFDPKEGK), identical to the related rat and mouse sequences.
Sequence:	QNFQHRVHTS FDPKEGK
Isotype:	IgG
Cross-Reactivity (Details):	Predicted Cross Reactivity: mouse No cross reactivity with other proteins. Predicted Cross Reactivity: Species predicted to be fit for the product based on sequence similarities.
Characteristics:	Rabbit IgG polyclonal antibody for Serine/threonine-protein kinase PAK 6(PAK6) detection.

Product Details

Tested with WB, IHC-P in Human,Rat,Mouse.

Gene Name: p21 protein(Cdc42/Rac)-activated kinase 6

Protein Name: Serine/threonine-protein kinase PAK 6

Purification: Immunogen affinity purified.

Target Details

Target: PAK6

Alternative Name: PAK6 ([PAK6 Products](#))

Background: Serine/threonine-protein kinase PAK 6(p21 Protein-activated Kinase 6) is an enzyme that in humans is encoded by the PAK6 gene. The PAK6 gene is mapped to chromosome 15q15. based on an alignment of the PAK6 sequence with the genomic sequence. This gene encodes a protein that shares a high degree of sequence similarity with p21-activated kinase(PAK) family members. The proteins of this family are Rac/Cdc42-associated Ste20-like Ser/Thr protein kinases, characterized by a highly conserved amino-terminal Cdc42/Rac interactive binding(CRIB) domain and a carboxyl-terminal kinase domain. PAK kinases are implicated in the regulation of a number of cellular processes, including cytoskeleton rearrangement, apoptosis and the MAP kinase signaling pathway. The protein encoded by this gene was found to interact with androgen receptor(AR), which is a steroid hormone-dependent transcription factor that is important for male sexual differentiation and development. The p21-activated protein kinase 6 gene was found to be highly expressed in testis and prostate tissues and the encoded protein was shown to cotranslocate into the nucleus with AR in response to androgen.

Synonyms: CDKN1A activated kinase 6 antibody|EC 2.7.1.37 antibody|p21 activated protein kinase 6 antibody|p21 protein(Cdc42/Rac)-activated kinase 6 antibody|p21(CDKN1A) activated kinase 6 antibody|p21-activated kinase 6 antibody|p21activated kinase 6 antibody|PAK 5 antibody|PAK 6 antibody|PAK-5 antibody|PAK-6 antibody|PAK5 antibody|Pak6 antibody|PAK6_HUMAN antibody|Serine threonine protein kinase PAK 6 antibody|Serine/threonine protein kinase PAK 6 antibody|Serine/threonine-protein kinase PAK 6 antibody

Application Details

Application Notes: WB: Concentration: 0.1-0.5 µg/mL, Tested Species: Human, Rat, Predicted Species: Mouse
IHC-P: Concentration: 0.5-1 µg/mL, Tested Species: Rat, Predicted Species: Human, Mouse,
Epitope Retrieval by Heat: Boiling the paraffin sections in 10 mM citrate buffer, pH 6.0, for

Application Details

20 mins is required for the staining of formalin/paraffin sections.

Notes: Tested Species: Species with positive results. Predicted Species: Species predicted to be fit for the product based on sequence similarities. Other applications have not been tested.

Optimal dilutions should be determined by end users.

Comment: Antibody can be supported by chemiluminescence kit ABIN921124 in WB, supported by ABIN921231 in IHC(P).

Restrictions: For Research Use only

Handling

Format: Lyophilized

Reconstitution: Add 0.2 mL of distilled water will yield a concentration of 500 µg/mL.

Concentration: 500 µg/mL

Buffer: Each vial contains 5 mg BSA, 0.9 mg NaCl, 0.2 mg Na₂HPO₄, 0.05 mg Thimerosal, 0.05 mg Sodium azide.

Preservative: Thimerosal (Merthiolate), Sodium azide

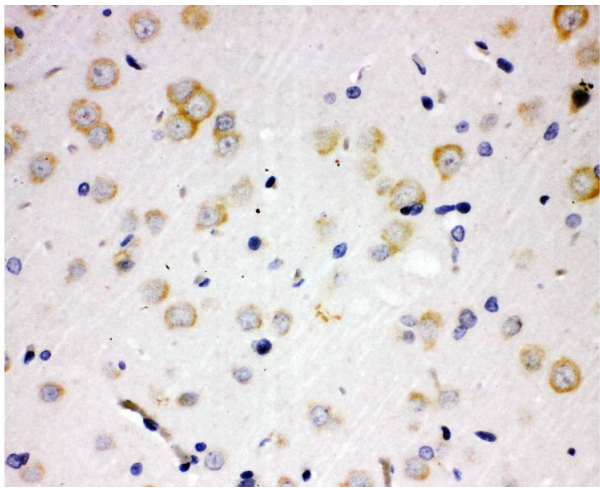
Precaution of Use: This product contains Sodium azide and Thimerosal (Merthiolate): POISONOUS AND HAZARDOUS SUBSTANCES which should be handled by trained staff only.

Handling Advice: Avoid repeated freezing and thawing.

Storage: 4 °C/-20 °C

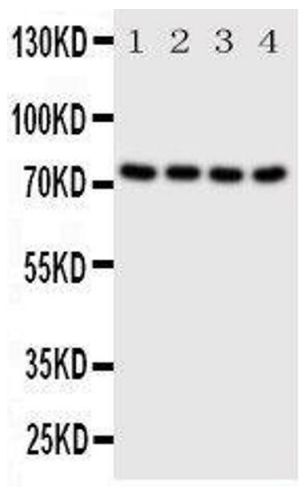
Storage Comment: At -20°C for one year. After reconstitution, at 4°C for one month.
It can also be aliquotted and stored frozen at -20 °C for a longer time. Avoid repeated freezing and thawing.

Expiry Date: 12 months



Immunohistochemistry

Image 1. Anti-PAK6 antibody, IHC(P) IHC(P): Rat Brain Tissue



Western Blotting

Image 2.