

Datasheet for ABIN3044294
anti-C5 antibody (N-Term)



[Go to Product page](#)

6 Images

Overview

Quantity:	100 µg
Target:	C5
Binding Specificity:	AA 1-18, N-Term
Reactivity:	Mouse, Rat
Host:	Rabbit
Clonality:	Polyclonal
Conjugate:	This C5 antibody is un-conjugated
Application:	Western Blotting (WB), Immunohistochemistry (Paraffin-embedded Sections) (IHC (p))

Product Details

Purpose:	Rabbit IgG polyclonal antibody for Complement C5(C5) detection. Tested with WB, IHC-P in Mouse,Rat.
Immunogen:	A synthetic peptide corresponding to a sequence at the N-terminus of rat C5a(1-18aa DLQLLHQBKVEEQAAKYKH), different from the related mouse sequence by four amino acids.
Sequence:	DLQLLHQBKVE EQAAKYKH
Isotype:	IgG
Cross-Reactivity (Details):	No cross reactivity with other proteins.
Characteristics:	Rabbit IgG polyclonal antibody for Complement C5(C5) detection. Tested with WB, IHC-P in Mouse,Rat. Gene Name: complement component 5 Protein Name: Complement C5

Product Details

Purification: Immunogen affinity purified.

Target Details

Target: C5

Alternative Name: Complement C5 ([C5 Products](#))

Background: C5a is a protein fragment released from complement component C5. This gene is mapped to 9q33.2. The protein encoded by this gene is the fifth component of complement, which plays an important role in inflammatory and cell killing processes. This protein is comprised of alpha and beta polypeptide chains that are linked by a disulfide bridge. An activation peptide, C5a, which is an anaphylatoxin that possesses potent spasmogenic and chemotactic activity, is derived from the alpha polypeptide via cleavage with a convertase. The C5b macromolecular cleavage product can form a complex with the C6 complement component, and this complex is the basis for formation of the membrane attack complex, which includes additional complement components. Mutations in this gene cause complement component 5 deficiency, a disease where patients show a propensity for severe recurrent infections. Defects in this gene have also been linked to susceptibility to liver fibrosis and to rheumatoid arthritis.

Synonyms: Anaphylatoxin C5a analog antibody|Anaphylatoxin C5a antibody|C5 antibody|C5a antibody|Complement C5 antibody|Complement component C5 antibody|Complement component C5a antibody|CPAMD 4 antibody|CPAMD4 antibody

Gene ID: 362119

UniProt: [P08650](#)

Pathways: [Complement System](#), [Carbohydrate Homeostasis](#)

Application Details

Application Notes: WB: Concentration: 0.1-0.5 µg/mL, Tested Species: Mouse, Rat
IHC-P: Concentration: 0.5-1 µg/mL, Tested Species: Mouse, Rat, Epitope Retrieval by Heat: Boiling the paraffin sections in 10 mM citrate buffer, pH 6.0, for 20 mins is required for the staining of formalin/paraffin sections.
Notes: Tested Species: Species with positive results. Predicted Species: Species predicted to be fit for the product based on sequence similarities. Other applications have not been tested.
Optimal dilutions should be determined by end users.

Comment: Antibody can be supported by chemiluminescence kit ABIN921124 in WB, supported by

Application Details

ABIN921231 in IHC(P).

Restrictions: For Research Use only

Handling

Format: Lyophilized

Reconstitution: Add 0.2 mL of distilled water will yield a concentration of 500 µg/mL.

Concentration: 500 µg/mL

Buffer: Each vial contains 5 mg BSA, 0.9 mg NaCl, 0.2 mg Na₂HPO₄, 0.05 mg Thimerosal, 0.05 mg Sodium azide.

Preservative: Thimerosal (Merthiolate), Sodium azide

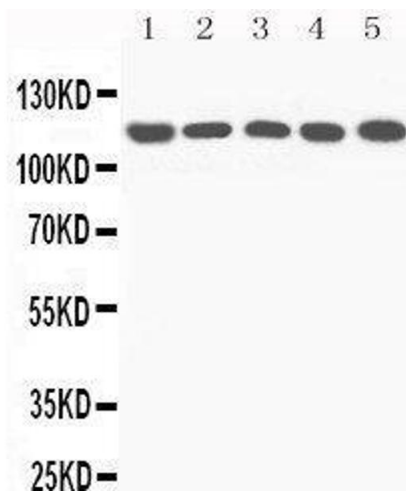
Precaution of Use: This product contains Sodium azide and Thimerosal (Merthiolate): POISONOUS AND HAZARDOUS SUBSTANCES which should be handled by trained staff only.

Handling Advice: Avoid repeated freezing and thawing.

Storage: 4 °C/-20 °C

Storage Comment: At -20°C for one year. After reconstitution, at 4°C for one month.
It can also be aliquotted and stored frozen at -20 °C for a longer time. Avoid repeated freezing and thawing.

Images



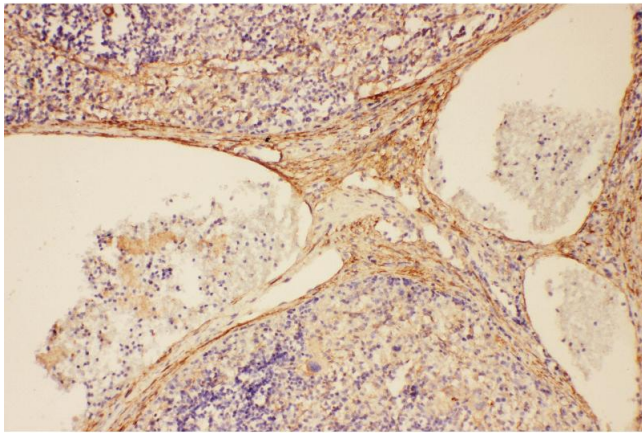
Western Blotting

Image 1.



Western Blotting

Image 2.



Immunohistochemistry

Image 3. Anti-C5/C5a antibody, IHC(P) IHC(P): Rat Spleen Tissue

Please check the [product details page](#) for more images. Overall 6 images are available for ABIN3044294.