

Datasheet for ABIN3044299  
**anti-GRP94 antibody (Middle Region)**



[Go to Product page](#)

4 Images

1 Publication

## Overview

Quantity:	100 µg
Target:	GRP94 (HSP90B1)
Binding Specificity:	AA 687-700, Middle Region
Reactivity:	Human, Mouse, Rat
Host:	Rabbit
Clonality:	Polyclonal
Conjugate:	This GRP94 antibody is un-conjugated
Application:	Western Blotting (WB), Immunocytochemistry (ICC), Immunohistochemistry (Paraffin-embedded Sections) (IHC (p)), Immunohistochemistry (Frozen Sections) (IHC (fro))

## Product Details

Purpose:	Rabbit IgG polyclonal antibody for Endoplasmin(HSP90B1) detection. Tested with WB, IHC-P, IHC-F, ICC in Human,Mouse,Rat.
Immunogen:	A synthetic peptide corresponding to a sequence in the middle region of human GRP94(687-700aa INPRHPLIRDMLRR), identical to the related mouse and rat sequences.
Sequence:	INPRHPLIRD MLRR
Isotype:	IgG
Cross-Reactivity (Details):	No cross reactivity with other proteins.
Characteristics:	Rabbit IgG polyclonal antibody for Endoplasmin(HSP90B1) detection. Tested with WB, IHC-P, IHC-F, ICC in Human,Mouse,Rat. Gene Name: heat shock protein 90 kDa beta(Grp94), member 1

## Product Details

---

Protein Name: Endoplasmin

Purification: Immunogen affinity purified.

## Target Details

---

Target: GRP94 (HSP90B1)

Alternative Name: HSP90B1 ([HSP90B1 Products](#))

Background: Heat shock protein 90 kDa beta member 1 (HSP90B1), known also as endoplasmin, GRP94, is a chaperone protein that in humans is encoded by the HSP90B1 gene. It is mapped to chromosome 12q23.3. This gene encodes a member of a family of adenosine triphosphate (ATP)-metabolizing molecular chaperones with roles in stabilizing and folding other proteins. The encoded protein is localized to melanosomes and the endoplasmic reticulum. Expression of this protein is associated with a variety of pathogenic states, including tumor formation.

Synonyms: 94 kDa glucose regulated protein antibody|94 kDa glucose-regulated protein antibody|ECGP antibody|Endoplasmin antibody|Endothelial cell(HBMEC) glycoprotein antibody|ENPL\_HUMAN antibody|Glucose regulated protein 94 antibody|Glucose regulated protein 94 kDa antibody|gp96 antibody|gp96 homolog antibody|GRP 94 antibody|GRP-94 antibody|Heat shock protein 90 kDa beta member 1 antibody|heat shock protein 90 kDa beta(Grp94), member 1 antibody|Heat shock protein, 90 kDa, beta, 1 antibody|HSP90B1 antibody|Stress inducible tumor rejection antigen GP96 antibody|TRA1 antibody|tumor rejection antigen(gp96) 1 antibody|Tumor rejection antigen 1 antibody|Tumor rejection antigen gp96 antibody|Tumor rejection antigen-1(gp96) antibody

UniProt: [P14625](#)

Pathways: [Thyroid Hormone Synthesis](#), [Activation of Innate immune Response](#), [ER-Nucleus Signaling](#), [Toll-Like Receptors Cascades](#)

## Application Details

---

Application Notes: WB: Concentration: 0.1-0.5 µg/mL, Tested Species: Human  
IHC-P: Concentration: 0.5-1 µg/mL, Tested Species: Human, Mouse, Rat, Epitope Retrieval by Heat: Boiling the paraffin sections in 10 mM citrate buffer, pH 6.0, for 20 mins is required for the staining of formalin/paraffin sections.  
IHC-F: Concentration: 0.5-1 µg/mL, Tested Species: Rat, Predicted Species: Human, Mouse  
ICC: Concentration: 0.5-1 µg/mL, Tested Species: Human, Predicted Species: Mouse, Rat

## Application Details

---

Notes: Tested Species: Species with positive results. Predicted Species: Species predicted to be fit for the product based on sequence similarities. Other applications have not been tested.  
Optimal dilutions should be determined by end users.

Comment: Antibody can be supported by chemiluminescence kit ABIN921124 in WB, supported by ABIN921231 in IHC(P), IHC(F) and ICC.

Restrictions: For Research Use only

## Handling

---

Format: Lyophilized

Reconstitution: Add 0.2 mL of distilled water will yield a concentration of 500 µg/mL.

Concentration: 500 µg/mL

Buffer: Each vial contains 5 mg BSA, 0.9 mg NaCl, 0.2 mg Na<sub>2</sub>HPO<sub>4</sub>, 0.05 mg Thimerosal, 0.05 mg Sodium azide.

Preservative: Thimerosal (Merthiolate), Sodium azide

Precaution of Use: This product contains Sodium azide and Thimerosal (Merthiolate): POISONOUS AND HAZARDOUS SUBSTANCES which should be handled by trained staff only.

Handling Advice: Avoid repeated freezing and thawing.

Storage: 4 °C/-20 °C

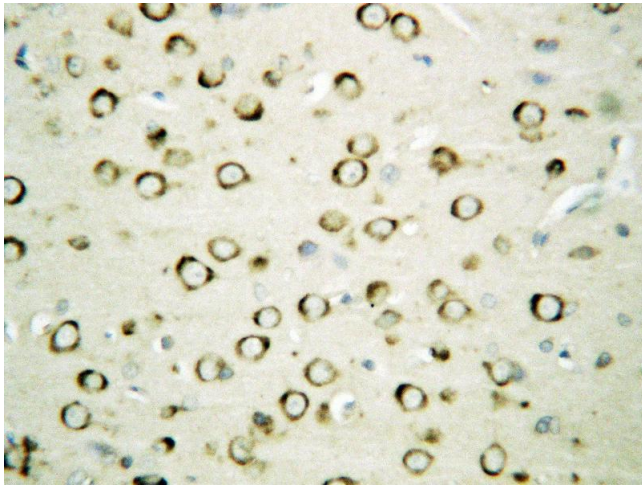
Storage Comment: At -20°C for one year. After reconstitution, at 4°C for one month.  
It can also be aliquotted and stored frozen at -20 °C for a longer time. Avoid repeated freezing and thawing.

Expiry Date: 12 months

## Publications

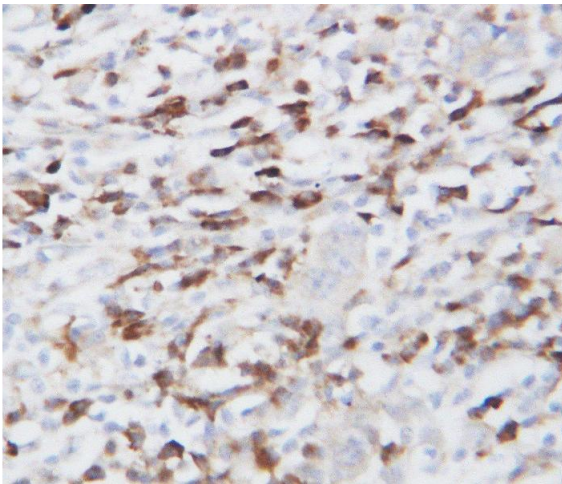
---

Product cited in: Wang, Wang, Huang, Yang, Zhao, Wei, Zhao: "Erratum to: Ibutilide protects against cardiomyocytes injury via inhibiting endoplasmic reticulum and mitochondrial stress pathways." in: **Heart and vessels**, Vol. 32, Issue 2, pp. 216, (2016) ([PubMed](#)).



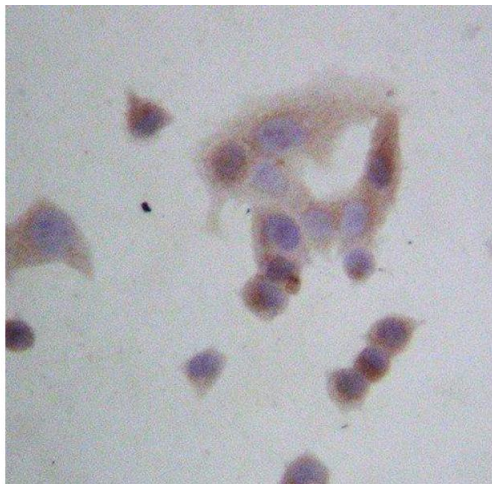
#### Immunohistochemistry

**Image 1.** Anti-GRP94 antibody, IHC(P) IHC(P): Rat Brain Tissue



#### Immunohistochemistry

**Image 2.** Anti-GRP94 antibody, IHC(P) IHC(P): Human Lung Cancer Tissue



#### Immunohistochemistry

**Image 3.** Anti-GRP94 antibody, IHC(P) IHC(P): HELA Cell

Please check the [product details page](#) for more images. Overall 4 images are available for ABIN3044299.