

Datasheet for ABIN3044318
anti-CCR5 antibody (N-Term)

6 Images

1 Publication

[Go to Product page](#)

Overview

Quantity:	100 µg
Target:	CCR5
Binding Specificity:	AA 19-34, N-Term
Reactivity:	Human, Mouse
Host:	Rabbit
Clonality:	Polyclonal
Application:	Western Blotting (WB), Immunohistochemistry (Paraffin-embedded Sections) (IHC (p))

Product Details

Purpose:	Rabbit IgG polyclonal antibody for C-C chemokine receptor type 5(CCR5) detection. Tested with WB, IHC-P in Human,Mouse,Rat.
Immunogen:	A synthetic peptide corresponding to a sequence at the N-terminus of human CCR5(19-34aa PCQKINVKQIAARLLP), different from the related rat sequence by two amino acids.
Sequence:	PCQKINVKQI AARLLP
Isotype:	IgG
Cross-Reactivity (Details):	<p>Predicted Cross Reactivity: rat</p> <p>No cross reactivity with other proteins.</p> <p>Predicted Cross Reactivity: Species predicted to be fit for the product based on sequence similarities.</p>
Characteristics:	Rabbit IgG polyclonal antibody for C-C chemokine receptor type 5(CCR5) detection. Tested with WB, IHC-P in Human,Mouse,Rat.

Product Details

Gene Name: chemokine(C-C motif) receptor 5(gene/pseudogene)

Protein Name: C-C chemokine receptor type 5(C-C CKR-5/CC-CKR-5/CCR-5/CCR5)

Purification: Immunogen affinity purified.

Target Details

Target: CCR5

Alternative Name: CCR5 ([CCR5 Products](#))

Background: Human CC chemokine receptor 5(CCR5), which is 17.5 kb from the CMKBR2 gene, encodes a 352-amino acid protein with a calculated molecular mass of 40,600 Da. It is organized into four exons and two introns. Human CCR5 is a co-receptor for macrophage-tropic strains of human immunodeficiency virus(HIV)-1 and is expressed by bone-marrow-derived cells. CCR5 is expressed on neurons, astrocytes, and microglia in the central nervous system, and on epithelium, endothelium, vascular smooth muscle and fibroblasts in other tissues. Functionally, CCR5 mediates the activation of cells by the chemokines macrophage inflammatory protein-1alpha, macrophage inflammatory protein-1beta, and RANTES, and serves as a fusion cofactor for macrophage-tropic strains of human immunodeficiency virus type 1.

Synonyms: AM4 7 antibody|C C chemokine receptor type 5 antibody|C C CKR 5 antibody|C-C chemokine receptor type 5 antibody|C-C CKR-5 antibody|C-C motif chemokine receptor 5 A159A antibody|CC Chemokine Receptor 5 antibody|CC Chemokine Receptor Type 5 antibody|CC CKR 5 antibody|CC-CKR-5 antibody|CCCKR 5 antibody|CCCKR5 antibody|CCR 5 antibody|CCR-5 antibody|CCR5 antibody|CCR5 chemokine(C C motif) receptor 5 antibody|CCR5_HUMAN antibody|CD 195 antibody|CD195 antibody|CD195 Antigen antibody|Chemokine C C motif receptor 5 antibody|Chemokine receptor CCR5 antibody|CHEMR13 antibody|CKR 5 antibody|CKR5 antibody|CMKBR 5 antibody|CMKBR5 antibody|FLJ78003 antibody|HIV 1 Fusion Coreceptor antibody|HIV-1 fusion coreceptor antibody|HIV1 fusion coreceptor antibody|IDDM22 antibody|MIP-1 alpha receptor antibody

UniProt: [P51681](#)

Pathways: [Cellular Response to Molecule of Bacterial Origin](#), [cAMP Metabolic Process](#), [Regulation of Cell Size](#)

Application Details

Application Notes: WB: Concentration: 0.1-0.5 µg/mL, Tested Species: Human, Mouse, Predicted Species: Rat

Application Details

IHC-P: Concentration: 0.5-1 µg/mL, Tested Species: Human, Predicted Species: Mouse, Rat,
Epitope Retrieval by Heat: Boiling the paraffin sections in 10 mM citrate buffer, pH 6.0, for
20 mins is required for the staining of formalin/paraffin sections.

Notes: Tested Species: Species with positive results. Predicted Species: Species predicted to be
fit for the product based on sequence similarities. Other applications have not been tested.

Optimal dilutions should be determined by end users.

Comment: Antibody can be supported by chemiluminescence kit ABIN921124 in WB, supported by
ABIN921231 in IHC(P).

Restrictions: For Research Use only

Handling

Format: Lyophilized

Reconstitution: Add 0.2 mL of distilled water will yield a concentration of 500 µg/mL.

Concentration: 500 µg/mL

Buffer: Each vial contains 5 mg BSA, 0.9 mg NaCl, 0.2 mg Na₂HPO₄, 0.05 mg Thimerosal, 0.05 mg
Sodium azide.

Preservative: Thimerosal (Merthiolate), Sodium azide

Precaution of Use: This product contains Sodium azide and Thimerosal (Merthiolate): POISONOUS AND
HAZARDOUS SUBSTANCES which should be handled by trained staff only.

Handling Advice: Avoid repeated freezing and thawing.

Storage: 4 °C/-20 °C

Storage Comment: At -20°C for one year. After reconstitution, at 4°C for one month.
It can also be aliquotted and stored frozen at -20 °C for a longer time. Avoid repeated freezing
and thawing.

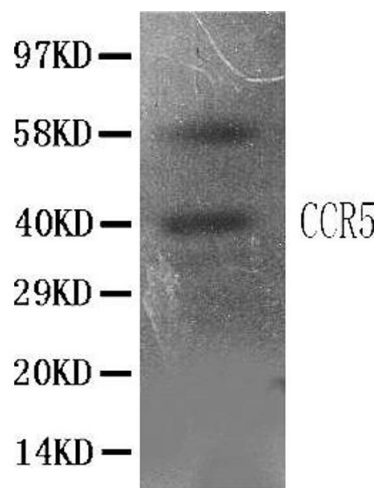
Expiry Date: 12 months

Publications

Product cited in: Lang, Schulte, Goddard, Hedrick, Schulte, Wei, Schmiedt: "Transplantation of mouse embryonic
stem cells into the cochlea of an auditory-neuropathy animal model: effects of timing after
injury." in: **Journal of the Association for Research in Otolaryngology : JARO**, Vol. 9, Issue 2,
pp. 225-40, (2008) ([PubMed](#)).

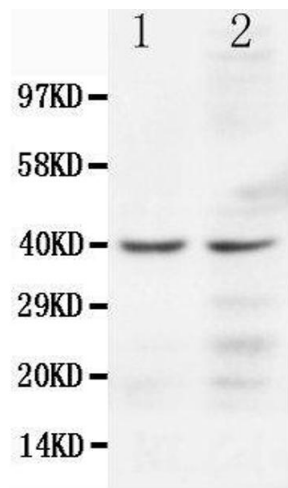
Lang, Ebihara, Schmiedt, Minamiguchi, Zhou, Smythe, Liu, Ogawa, Schulte: "Contribution of bone marrow hematopoietic stem cells to adult mouse inner ear: mesenchymal cells and fibrocytes." in: **The Journal of comparative neurology**, Vol. 496, Issue 2, pp. 187-201, (2006) ([PubMed](#)).

Images



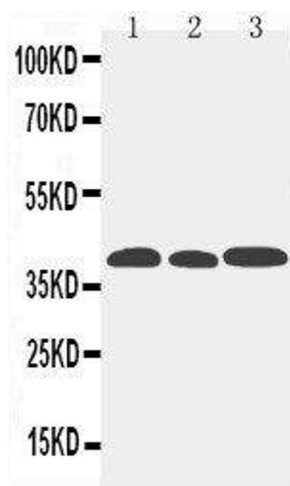
Western Blotting

Image 1. Anti-CCR5 antibody, IHC(P)All lanes: Anti CCR5 at 0.5ug/ml WB: Mouse Liver Tissue Lysate at 50ug Predicted bind size: 40KD Observed bind size: 40KD



Western Blotting

Image 2. Anti-CCR5 antibody, Western blotting Lane 1: JURKAT Cell Lysate Lane 2: COLO320 Cell Lysate



Western Blotting

Image 3. Anti-CCR5 antibody, Western blotting Lane 1: Mouse Lung Tissue Lysate Lane 2: Mouse Intestine Tissue Lysate Lane 3: Mouse Kidney Tissue Lysate

Please check the [product details page](#) for more images. Overall 6 images are available for ABIN3044318.