

Datasheet for ABIN3044319  
**anti-CD40 Ligand antibody (N-Term)**



[Go to Product page](#)

4 Images

1 Publication

## Overview

Quantity:	100 µg
Target:	CD40 Ligand (CD40LG)
Binding Specificity:	AA 47-65, N-Term
Reactivity:	Human
Host:	Rabbit
Clonality:	Polyclonal
Conjugate:	This CD40 Ligand antibody is un-conjugated
Application:	Western Blotting (WB), Immunohistochemistry (Paraffin-embedded Sections) (IHC (p))

## Product Details

Purpose:	Rabbit IgG polyclonal antibody for CD40 ligand(CD40LG) detection. Tested with WB, IHC-P in Human.
Immunogen:	A synthetic peptide corresponding to a sequence at the N-terminus of human CD40L(47-65aa HRRLDKIEDERNLHEDFVF), different from the related mouse sequence by three amino acids, rat sequence by four amino acids.
Sequence:	HRRLDKIEDE RNLHEDFVF
Isotype:	IgG
Cross-Reactivity (Details):	No cross reactivity with other proteins.
Characteristics:	Rabbit IgG polyclonal antibody for CD40 ligand(CD40LG) detection. Tested with WB, IHC-P in Human. Gene Name: CD40 ligand

## Product Details

---

Protein Name: CD40 ligand(CD40-L)

---

Purification: Immunogen affinity purified.

---

## Target Details

---

Target: CD40 Ligand (CD40LG)

---

Alternative Name: CD40LG ([CD40LG Products](#))

---

Background: CD40 ligand(CD40L) is a type II membrane protein of 261 amino acids on activated T cells that induces B cell proliferation and immunoglobulin secretion. It has homology with tumour necrosis factor-alpha and -beta, and has important functions in B-cell activation and differentiation. Human CD40L with 5 exons, is mapped to the proximal region of the mouse X chromosome on Xq26.3-27.1, and can be detected on T cells but is absent from B cells and monocytes. Since CD40L is expressed on platelets and released from them on activation, its predictive value as a marker for clinical outcome and the therapeutic effect of inhibition of glycoprotein IIb /IIIa receptor in patients with acute coronary syndromes was investigated. The soluble CD40L may be involved in the process of restenosis and that it exerts its effect by triggering a complex group of inflammatory reactions on endothelial and mononuclear cells. CD40L plays a central role in the pathophysiology of acute coronary syndromes, and has a role in the pathogenesis of coronary artery lesions.

Synonyms: CD 154 antibody|CD 40L antibody|CD154 antibody|CD154 antigen antibody|CD40 antigen ligand antibody|CD40 homologue antibody|CD40 L antibody|CD40 ligand antibody|CD40 ligand, soluble form antibody|CD40-L antibody|CD40L\_HUMAN antibody|CD40LG antibody|gp39 antibody|hCD40L antibody|HIGM1 antibody|Hyper IgM syndrome antibody|IGM antibody|IMD3 antibody|Ly62 antibody|T B cell activating molecule antibody|T BAM antibody|T cell antigen GP39 antibody|T-cell antigen Gp39 antibody|TBAM antibody|TNF related activation protein antibody|TNF superfamily member 5 antibody|TNF-related activation protein antibody|Tnfsf5 antibody|TRAP antibody|Tumor Necrosis Factor(ligand) Superfamily Member 5 antibody|Tumor necrosis factor ligand superfamily member 5 antibody

UniProt: [P29965](#)

---

Pathways: [NF-kappaB Signaling](#), [Production of Molecular Mediator of Immune Response](#), [Cancer Immune Checkpoints](#)

## Application Details

---

Application Notes: WB: Concentration: 0.1-0.5 µg/mL, Tested Species: Human  
IHC-P: Concentration: 0.5-1 µg/mL, Tested Species: Human, Epitope Retrieval by Heat: Boiling the paraffin sections in 10 mM citrate buffer, pH 6.0, for 20 mins is required for the staining of formalin/paraffin sections.  
Notes: Tested Species: Species with positive results. Predicted Species: Species predicted to be fit for the product based on sequence similarities. Other applications have not been tested.  
Optimal dilutions should be determined by end users.

Comment: Antibody can be supported by chemiluminescence kit ABIN921124 in WB, supported by ABIN921231 in IHC(P).

Restrictions: For Research Use only

## Handling

---

Format: Lyophilized

Reconstitution: Add 0.2 mL of distilled water will yield a concentration of 500 µg/mL.

Concentration: 500 µg/mL

Buffer: Each vial contains 5 mg BSA, 0.9 mg NaCl, 0.2 mg Na<sub>2</sub>HPO<sub>4</sub>, 0.05 mg Thimerosal, 0.05 mg Sodium azide.

Preservative: Thimerosal (Merthiolate), Sodium azide

Precaution of Use: This product contains Sodium azide and Thimerosal (Merthiolate): POISONOUS AND HAZARDOUS SUBSTANCES which should be handled by trained staff only.

Handling Advice: Avoid repeated freezing and thawing.

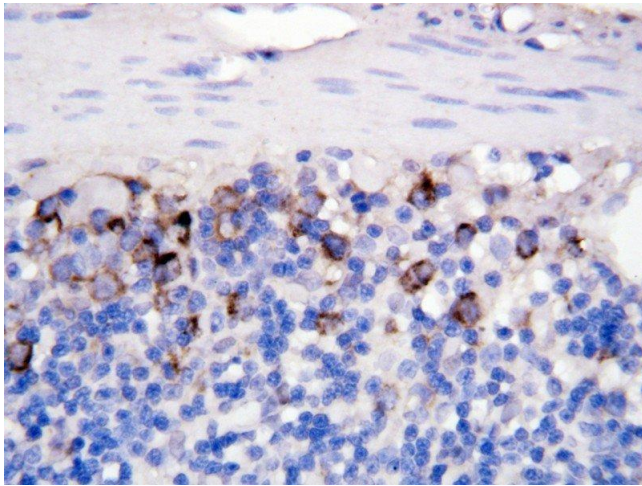
Storage: 4 °C/-20 °C

Storage Comment: At -20°C for one year. After reconstitution, at 4°C for one month.  
It can also be aliquotted and stored frozen at -20 °C for a longer time. Avoid repeated freezing and thawing.

## Publications

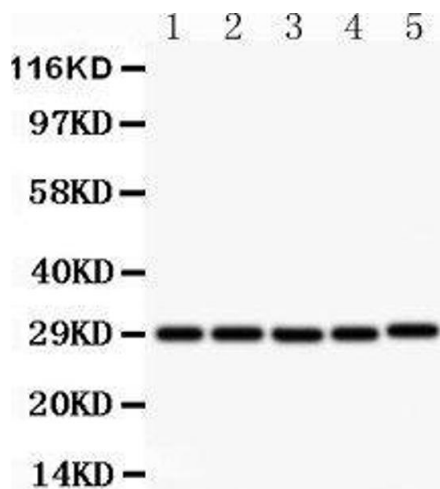
---

Product cited in: Yang, Fang, Liu, Zhang, Shi, Ji, Lin, Lin: "Protective effects of chinese traditional medicine buyang huanwu decoction on myocardial injury." in: **Evidence-based complementary and alternative medicine : eCAM**, Vol. 2011, pp. 930324, (2012) ([PubMed](#)).



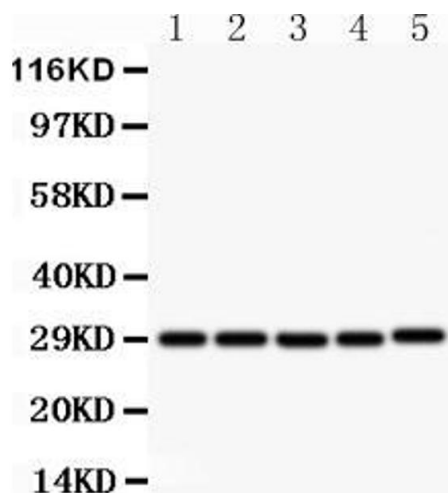
### Immunohistochemistry

**Image 1.** Anti CD40L antibody, IHC(P) IHC(P): Rat Intestine Tissue



### Western Blotting

**Image 2.** Anti- CD40L antibody, Western blotting All lanes: Anti CD40L at 0.5ug/ml Lane 1: MCF-7 Whole Cell Lysate at 40ug Lane 2: HELA Whole Cell Lysate at 40ug Lane 3: JURKAT Whole Cell Lysate at 40ug Lane 4: HMY2 Whole Cell Lysate at 40ug Lane 5: COLO320 Whole Cell Lysate at 40ug Predicted bind size: 29KD Observed bind size: 29KD



### Western Blotting

**Image 3.** Western blot analysis of sCD40L using anti-sCD40L antibody . Electrophoresis was performed on a 5-20% SDS-PAGE gel at 70V (Stacking gel) / 90V (Resolving gel) for 2-3 hours. The sample well of each Lane was loaded with 50ug of sample under reducing conditions. Lane 1: MCF-7 Whole Cell Lysate, Lane 2: HELA Whole Cell Lysate, Lane 3: JURKAT Whole Cell Lysate, Lane 4: HMY2 Whole Cell Lysate, Lane 5: COLO320 Whole Cell Lysate. After Electrophoresis, proteins were transferred to a Nitrocellulose membrane at 150mA for 50-90 minutes. Blocked the membrane with 5% Non-fat Milk/ TBS for 1.5 hour at RT. The membrane was incubated with rabbit anti-sCD40L antigen affinity purified polyclonal antibody (Catalog # ) at 0.5 µg/mL overnight at 4°C, then washed

with TBS-0.1%Tween 3 times with 5 minutes each and probed with a goat anti-rabbit IgG-HRP secondary antibody at a dilution of 1:10000 for 1.5 hour at RT. The signal is developed using an Enhanced Chemiluminescent detection (ECL) kit (Catalog # EK1002) with Tanon 5200 system. A specific band was detected for sCD40L at approximately 29KD. The expected band size for sCD40L is at 29KD.

Please check the [product details page](#) for more images. Overall 4 images are available for ABIN3044319.