

Datasheet for ABIN3044325

anti-Integrin alpha 1 antibody (C-Term)

4 Images

1 Publication

[Go to Product page](#)

Overview

Quantity:	100 µg
Target:	Integrin alpha 1 (ITGA1)
Binding Specificity:	AA 1121-1134, C-Term
Reactivity:	Human, Rat
Host:	Rabbit
Clonality:	Polyclonal
Application:	Western Blotting (WB), Immunohistochemistry (Paraffin-embedded Sections) (IHC (p))

Product Details

Purpose:	Rabbit IgG polyclonal antibody for Integrin alpha-1(ITGA1) detection. Tested with WB, IHC-P in Human,Mouse,Rat.
Immunogen:	A synthetic peptide corresponding to a sequence at the C-terminus of human Integrin alpha 1(1121-1134aa SNQKRELAIQISKD), different from the related mouse and rat sequences by one amino acid.
Sequence:	SNQKRELAIQ ISKD
Isotype:	IgG
Cross-Reactivity (Details):	<p>Predicted Cross Reactivity: mouse</p> <p>No cross reactivity with other proteins.</p> <p>Predicted Cross Reactivity: Species predicted to be fit for the product based on sequence similarities.</p>
Characteristics:	Rabbit IgG polyclonal antibody for Integrin alpha-1(ITGA1) detection. Tested with WB, IHC-P in

Product Details

Human, Mouse, Rat.

Gene Name: integrin, alpha 1

Protein Name: Integrin alpha-1

Purification: Immunogen affinity purified.

Target Details

Target: Integrin alpha 1 (ITGA1)

Alternative Name: ITGA1 ([ITGA1 Products](#))

Background: Integrin alpha 1 (ITGA1) chain associates with the beta 1 (ITGB1) chain to form a heterodimer that functions as a dual laminin/collagen receptor in neural cells and hematopoietic cells. ITGA1 has a 206-amino acid I domain in its N-terminal half, followed by 3 divalent cation-binding sites and a C-terminal transmembrane domain with a short cytoplasmic tail. It also has 28 potential N-glycosylation sites. Human ITGA1 was expressed in a mouse fibroblast cell line as a 180-kD protein. ITGA1 is involved in the early remodeling of osteoarthritic cartilage and plays an essential role in the regulation of mesenchymal stem cell proliferation and cartilage production. It also plays an essential role in the regulation of MSC proliferation and cartilage production.

Synonyms: CD 49a antibody|CD49 antigen-like family member A antibody|CD49a antibody|CD49a antigen antibody|Integrin alpha-1 antibody|ITA1_HUMAN antibody|Itga 1 antibody|ITGA1 antibody|Laminin and collagen receptor antibody|Very late activation protein 1 antibody|VLA 1 antibody|VLA-1 antibody|VLA1 antibody

UniProt: [P56199](#)

Pathways: [EGFR Signaling Pathway](#), [CXCR4-mediated Signaling Events](#), [Signaling of Hepatocyte Growth Factor Receptor](#), [Integrin Complex](#)

Application Details

Application Notes: WB: Concentration: 0.1-0.5 µg/mL, Tested Species: Human, Rat, Predicted Species: Mouse
IHC-P: Concentration: 0.5-1 µg/mL, Tested Species: Human, Rat, Predicted Species: Mouse,
Epitope Retrieval by Heat: Boiling the paraffin sections in 10 mM citrate buffer, pH 6.0, for 20 mins is required for the staining of formalin/paraffin sections.
Notes: Tested Species: Species with positive results. Predicted Species: Species predicted to be fit for the product based on sequence similarities. Other applications have not been tested.

Application Details

Optimal dilutions should be determined by end users.

Comment: Antibody can be supported by chemiluminescence kit ABIN921124 in WB, supported by ABIN921231 in IHC(P).

Restrictions: For Research Use only

Handling

Format: Lyophilized

Reconstitution: Add 0.2 mL of distilled water will yield a concentration of 500 µg/mL.

Concentration: 500 µg/mL

Buffer: Each vial contains 5 mg BSA, 0.9 mg NaCl, 0.2 mg Na₂HPO₄, 0.05 mg Thimerosal, 0.05 mg Sodium azide.

Preservative: Thimerosal (Merthiolate), Sodium azide

Precaution of Use: This product contains Sodium azide and Thimerosal (Merthiolate): POISONOUS AND HAZARDOUS SUBSTANCES which should be handled by trained staff only.

Handling Advice: Avoid repeated freezing and thawing.

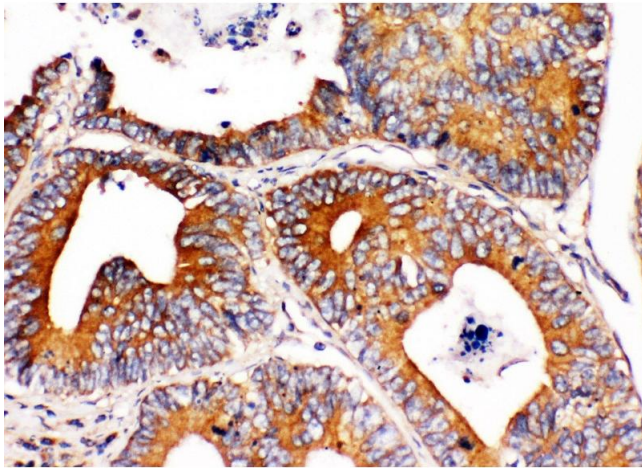
Storage: 4 °C/-20 °C

Storage Comment: At -20°C for one year. After reconstitution, at 4°C for one month.
It can also be aliquotted and stored frozen at -20 °C for a longer time. Avoid repeated freezing and thawing.

Expiry Date: 12 months

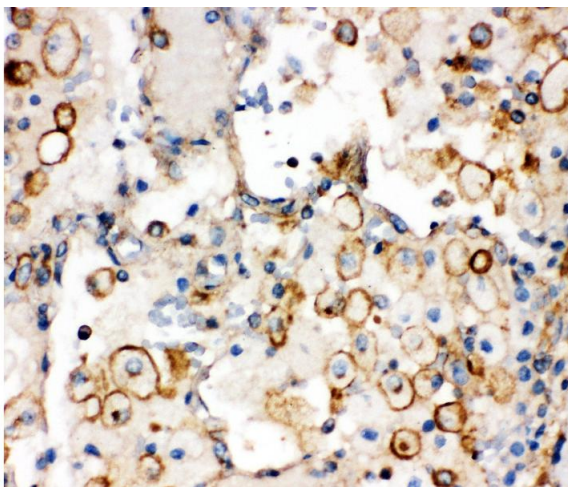
Publications

Product cited in: Whiteland, Nicholls, Shimeld, Easty, Williams, Hill: "Immunohistochemical detection of T-cell subsets and other leukocytes in paraffin-embedded rat and mouse tissues with monoclonal antibodies." in: **The journal of histochemistry and cytochemistry : official journal of the Histochemistry Society**, Vol. 43, Issue 3, pp. 313-20, (1995) ([PubMed](#)).



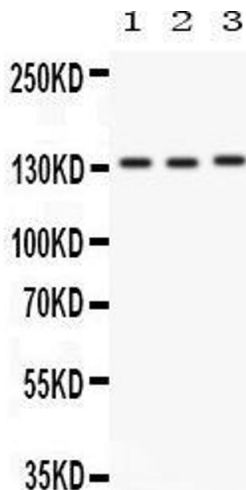
Immunohistochemistry

Image 1. Anti-Integrin alpha 1 antibody, IHC(P) IHC(P):
Human Intestinal Cancer Tissue



Immunohistochemistry

Image 2. Anti-Integrin alpha 1 antibody, IHC(P) IHC(P):
Human Lung Cancer Tissue



Western Blotting

Image 3. Anti-Integrin alpha 1 antibody, Western blotting All
lanes: Anti ITGA1 () at 0.5ug/ml Lane 1: Rat Brain Tissue
Lysate at 50ug Lane 2: HELA Whole Cell Lysate at 40ug
Lane 3: SW620 Whole Cell Lysate at 40ug Predicted bind
size: 131KD Observed bind size: 131KD

Please check the [product details page](#) for more images. Overall 4 images are available for ABIN3044325.