

Datasheet for ABIN3044326
anti-MORG1 antibody (N-Term)



[Go to Product page](#)

2 Images

Overview

| | |
|----------------------|--|
| Quantity: | 100 µg |
| Target: | MORG1 (wdr83) |
| Binding Specificity: | AA 29-43, N-Term |
| Reactivity: | Human, Rat |
| Host: | Rabbit |
| Clonality: | Polyclonal |
| Application: | Western Blotting (WB), Immunohistochemistry (Paraffin-embedded Sections) (IHC (p)) |

Product Details

| | |
|-----------------------------|--|
| Purpose: | Rabbit IgG polyclonal antibody for WD repeat domain-containing protein 83(WDR83) detection. Tested with WB, IHC-P in Human,Mouse,Rat. |
| Immunogen: | A synthetic peptide corresponding to a sequence at the N-terminus of human Morg1(29-43aa RAVRFNVDGNYCLTC), identical to the related mouse and rat sequences. |
| Sequence: | RAVRFNVDGN YCLTC |
| Isotype: | IgG |
| Cross-Reactivity (Details): | Predicted Cross Reactivity: mouse No cross reactivity with other proteins. Predicted Cross Reactivity: Species predicted to be fit for the product based on sequence similarities. |
| Characteristics: | Rabbit IgG polyclonal antibody for WD repeat domain-containing protein 83(WDR83) detection. Tested with WB, IHC-P in Human,Mouse,Rat. |

Product Details

Gene Name: WD repeat domain 83

Protein Name: WD repeat domain-containing protein 83

Purification: Immunogen affinity purified.

Target Details

Target: MORG1 (wdr83)

Alternative Name: WDR83 ([wdr83 Products](#))

Background: MORG1(mitogen-activated protein kinase organizer 1), a member of the WD-40 protein family that was isolated as a binding partner of the extracellular signal-regulated kinase(ERK) pathway scaffold protein MP1. MORG1 specifically associates with several components of the ERK pathway, including MP1, Raf-1, MEK, and ERK, and stabilizes their assembly into an oligomeric complex. MORG1 facilitates ERK activation when cells are stimulated with lysophosphatidic acid, phorbol 12-myristate 13-acetate, or serum, but not in response to epidermal growth factor. Suppression of MORG1 by short interfering RNA leads to a marked reduction in ERK activity when cells are stimulated with serum. MORG1 is a component of a modular scaffold system that participates in the regulation of agonist-specific ERK signaling.

Synonyms: MAPK organizer 1 antibody|MGC4238 antibody|Mitogen activated protein kinase organizer 1 antibody|Mitogen-activated protein kinase organizer 1 antibody|MORG 1 antibody|WD repeat domain-containing protein 83 antibody|wdr83 antibody|WDR83_HUMAN antibody

Application Details

Application Notes: WB: Concentration: 0.1-0.5 µg/mL, Tested Species: Human, Rat, Predicted Species: Mouse
IHC-P: Concentration: 0.5-1 µg/mL, Tested Species: Human, Rat, Predicted Species: Mouse,
Epitope Retrieval by Heat: Boiling the paraffin sections in 10 mM citrate buffer, pH 6.0, for 20 mins is required for the staining of formalin/paraffin sections.
Notes: Tested Species: Species with positive results. Predicted Species: Species predicted to be fit for the product based on sequence similarities. Other applications have not been tested.
Optimal dilutions should be determined by end users.

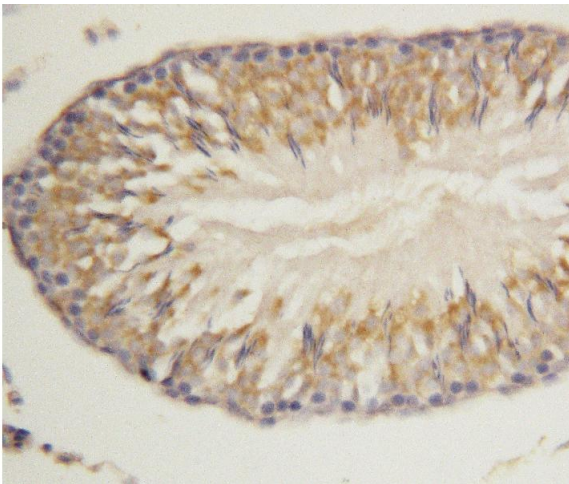
Comment: Antibody can be supported by chemiluminescence kit ABIN921124 in WB, supported by ABIN921231 in IHC(P).

Restrictions: For Research Use only

Handling

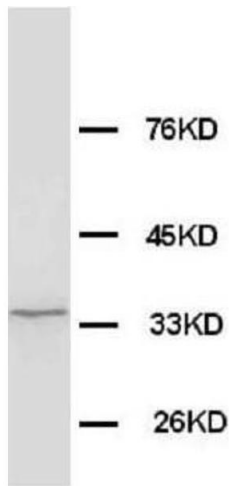
| | |
|--------------------|---|
| Format: | Lyophilized |
| Reconstitution: | Add 0.2 mL of distilled water will yield a concentration of 500 µg/mL. |
| Concentration: | 500 µg/mL |
| Buffer: | Each vial contains 5 mg BSA, 0.9 mg NaCl, 0.2 mg Na ₂ HPO ₄ , 0.05 mg Thimerosal, 0.05 mg Sodium azide. |
| Preservative: | Thimerosal (Merthiolate), Sodium azide |
| Precaution of Use: | This product contains Sodium azide and Thimerosal (Merthiolate): POISONOUS AND HAZARDOUS SUBSTANCES which should be handled by trained staff only. |
| Handling Advice: | Avoid repeated freezing and thawing. |
| Storage: | 4 °C/-20 °C |
| Storage Comment: | At -20°C for one year. After reconstitution, at 4°C for one month. It can also be aliquotted and stored frozen at -20 °C for a longer time. Avoid repeated freezing and thawing. |

Images



Immunohistochemistry

Image 1. Anti-Morg1 antibody, IHC(P) IHC(P): Rat Lung Tissue



Western Blotting

Image 2. Anti-Morg1 antibody, Western blotting WB: Rat Brain Tissue Lysate