

Datasheet for ABIN3044380
anti-Annexin A2 antibody (Middle Region)



[Go to Product page](#)

2 Images

1 Publication

Overview

Quantity:	100 µg
Target:	Annexin A2 (ANXA2)
Binding Specificity:	AA 121-141, Middle Region
Reactivity:	Human, Mouse, Rat
Host:	Rabbit
Clonality:	Polyclonal
Conjugate:	This Annexin A2 antibody is un-conjugated
Application:	Western Blotting (WB), Immunohistochemistry (Paraffin-embedded Sections) (IHC (p)), Immunohistochemistry (Frozen Sections) (IHC (fro))

Product Details

Purpose:	Rabbit IgG polyclonal antibody for Annexin A2(ANXA2) detection. Tested with WB, IHC-P, IHC-F in Human,Mouse,Rat.
Immunogen:	A synthetic peptide corresponding to a sequence in the middle region of human Annexin A2(121-141aa RAEDGSVIDYELIDQDARDLY), different from the rat sequence by one amino acid.
Sequence:	RAEDGSVIDY ELIDQDARDL Y
Isotype:	IgG
Cross-Reactivity (Details):	No cross reactivity with other proteins.
Characteristics:	Rabbit IgG polyclonal antibody for Annexin A2(ANXA2) detection. Tested with WB, IHC-P, IHC-F in Human,Mouse,Rat. Gene Name: annexin A2

Product Details

Protein Name: Annexin A2

Purification: Immunogen affinity purified.

Target Details

Target: Annexin A2 (ANXA2)

Alternative Name: ANXA2 ([ANXA2 Products](#))

Background: Annexin A2 also known as annexin II is a protein that in humans is encoded by the ANXA2 gene. The ANXA2 gene has three pseudogenes located on chromosomes 4, 9 and 10, respectively. Multiple alternatively spliced transcript variants encoding different isoforms have been found for this gene. This protein is a member of the annexin family. Members of this calcium-dependent phospholipid-binding protein family play a role in the regulation of cellular growth and in signal transduction pathways. This protein functions as an autocrine factor which heightens osteoclast formation and bone resorption. Richard et al.(1994) presented an integration of the physical, expression, and genetic maps of human chromosome 15. They placed the ANXA2 gene in their region IV, i.e., 15q21-q22, thus confirming the previous localization.

Synonyms: Annexin A2 antibody|Annexin II antibody|Annexin II, heavy chain antibody|Annexin-2 antibody|ANX 2 antibody|ANX2 antibody|ANX2L4 antibody|ANXA2 antibody|ANXA2_HUMAN antibody|arylsulfatase B antibody|CAL1H antibody|Calpactin I heavy chain antibody|calpactin I heavy polypeptide(p36) antibody|Calpactin-1 heavy chain antibody|chromobindin 8 antibody|Chromobindin-8 antibody|LIP2 antibody|Lipocortin II antibody|LPC2 antibody|LPC2D antibody|P36 antibody|P36 protein antibody|PAP-IV antibody|placental anticoagulant protein IV antibody|Protein I antibody

UniProt: [P07355](#)

Pathways: [S100 Proteins](#)

Application Details

Application Notes: WB: Concentration: 0.1-0.5 µg/mL, Tested Species: Human, Mouse, Rat
IHC-P: Concentration: 0.5-1 µg/mL, Tested Species: Human, Mouse, Rat, Epitope Retrieval by Heat: Boiling the paraffin sections in 10 mM citrate buffer, pH 6.0, for 20 mins is required for the staining of formalin/paraffin sections.
IHC-F: Concentration: 0.5-1 µg/mL, Tested Species: Human, Mouse, Rat

Application Details

Notes: Tested Species: Species with positive results. Predicted Species: Species predicted to be fit for the product based on sequence similarities. Other applications have not been tested.
Optimal dilutions should be determined by end users.

Comment: Antibody can be supported by chemiluminescence kit ABIN921124 in WB, supported by ABIN921231 in IHC(P) and IHC(F).

Restrictions: For Research Use only

Handling

Format: Lyophilized

Reconstitution: Add 0.2 mL of distilled water will yield a concentration of 500 µg/mL.

Concentration: 500 µg/mL

Buffer: Each vial contains 5 mg BSA, 0.9 mg NaCl, 0.2 mg Na₂HPO₄, 0.05 mg Thimerosal, 0.05 mg Sodium azide.

Preservative: Thimerosal (Merthiolate), Sodium azide

Precaution of Use: This product contains Sodium azide and Thimerosal (Merthiolate): POISONOUS AND HAZARDOUS SUBSTANCES which should be handled by trained staff only.

Handling Advice: Avoid repeated freezing and thawing.

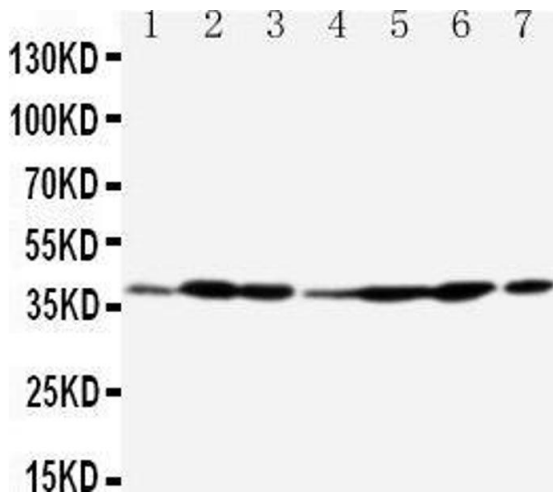
Storage: 4 °C/-20 °C

Storage Comment: At -20°C for one year. After reconstitution, at 4°C for one month.
It can also be aliquotted and stored frozen at -20 °C for a longer time. Avoid repeated freezing and thawing.

Expiry Date: 12 months

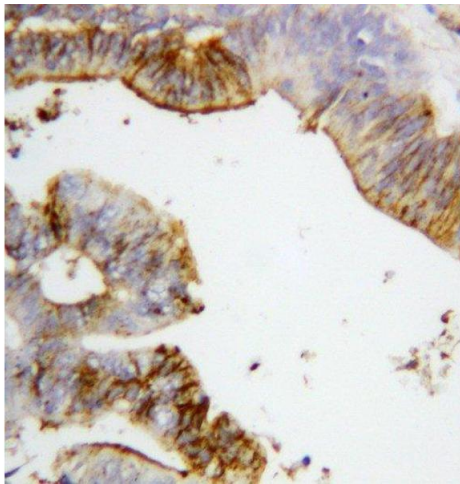
Publications

Product cited in: Zhu, Zou, Jia, Zhou, Hu, Peng, Chen, Jin: "Analysis of cellular proteome alterations in porcine alveolar macrophage cells infected with 2009 (H1N1) and classical swine H1N1 influenza viruses." in: **Journal of proteomics**, Vol. 75, Issue 6, pp. 1732-41, (2012) ([PubMed](#)).



Western Blotting

Image 1. Anti-Annexin A2 antibody, Western blotting Lane 1: Rat Testis Tissue Lysate Lane 2: Rat Lung Tissue Lysate Lane 3: Rat Ovary Tissue Lysate Lane 4: MCF-7 Cell Lysate Lane 5: SMMC Cell Lysate Lane 6: A549 Cell Lysate Lane 7: JURKAT Cell Lysate



Immunohistochemistry

Image 2. Anti-Annexin A2 antibody, IHC(P) IHC(P): Human Intestinal Cancer Tissue