

Datasheet for ABIN3044399
anti-ANXA6 antibody (C-Term)[Go to Product page](#)

3 Images

Overview

Quantity:	100 µg
Target:	ANXA6
Binding Specificity:	AA 636-652, C-Term
Reactivity:	Human, Rat
Host:	Rabbit
Clonality:	Polyclonal
Application:	Western Blotting (WB), Immunohistochemistry (Paraffin-embedded Sections) (IHC (p)), Immunohistochemistry (Frozen Sections) (IHC (fro))

Product Details

Purpose:	Rabbit IgG polyclonal antibody for Annexin A6(ANXA6) detection. Tested with WB, IHC-P, IHC-F in Human, Mouse, Rat.
Immunogen:	A synthetic peptide corresponding to a sequence at the C-terminus of human Annexin VI(636-652aa NIRREFIEKYDKSLHQA), identical to the related mouse and rat sequences.
Sequence:	NIRREFIEKY DKSLHQA
Isotype:	IgG
Cross-Reactivity (Details):	Predicted Cross Reactivity: mouse No cross reactivity with other proteins. Predicted Cross Reactivity: Species predicted to be fit for the product based on sequence similarities.
Characteristics:	Rabbit IgG polyclonal antibody for Annexin A6(ANXA6) detection. Tested with WB, IHC-P, IHC-F

Product Details

in Human,Mouse,Rat.

Gene Name: annexin A6

Protein Name: Annexin A6

Purification: Immunogen affinity purified.

Target Details

Target: ANXA6

Alternative Name: ANXA6 ([ANXA6 Products](#))

Background: Annexin A6(ANXA6) is a member of a family of proteins that bind membrane or cytoskeleton in a Ca(2+)-dependent manner. These proteins are characterized by homologous amino acid sequences that are present in multiple copies in each protein. ANXA6 gene is assigned to 5q32-q34 by use of a cDNA clone to probe genomic DNA from rodent-human somatic cell hybrids and for in situ hybridization. The ANX6 gene is approximately 60 kb long and contains 26 exons. The genomic sequence at the 3-prime end does not contain a canonical polyadenylation signal. Ca(2+)-dependent binding between CRHSP28 and ANXA6 is required for acinar cell membrane trafficking events and digestive enzyme secretion

Synonyms: 67 kDa calelectrin antibody|Annexin A6 antibody|Annexin VI antibody|Annexin VI p68 antibody|Annexin-6 antibody|AnnexinA6 antibody|AnnexinVI antibody|ANX 6 antibody|ANX A6 antibody|ANX6 antibody|ANXA 6 antibody|ANXA6 antibody|ANXA6_HUMAN antibody|Calcium binding protein p68 antibody|Calelectrin antibody|Calphobindin II antibody|Calphobindin-II antibody|CalphobindinII antibody|CBP 68 antibody|CBP68 antibody|Chromobindin 20 antibody|Chromobindin-20 antibody|Chromobindin20 antibody|CPB II antibody|CPB-II antibody|CPBII antibody|Lipocortin VI antibody|LipocortinVI antibody|p68 antibody|p70 antibody|Protein III antibody|ProteinIII antibody

UniProt: [P08133](#)

Application Details

Application Notes: WB: Concentration: 0.1-0.5 µg/mL, Tested Species: Human, Rat, Predicted Species: Mouse
IHC-P: Concentration: 0.5-1 µg/mL, Tested Species: Human, Rat, Predicted Species: Mouse,
Epitope Retrieval by Heat: Boiling the paraffin sections in 10 mM citrate buffer, pH 6.0, for 20 mins is required for the staining of formalin/paraffin sections.
IHC-F: Concentration: 0.5-1 µg/mL, Tested Species: Rat, Predicted Species: Human, Mouse

Application Details

Notes: Tested Species: Species with positive results. Predicted Species: Species predicted to be fit for the product based on sequence similarities. Other applications have not been tested.
Optimal dilutions should be determined by end users.

Comment: Antibody can be supported by chemiluminescence kit ABIN921124 in WB, supported by ABIN921231 in IHC(P) and IHC(F).

Restrictions: For Research Use only

Handling

Format: Lyophilized

Reconstitution: Add 0.2 mL of distilled water will yield a concentration of 500 µg/mL.

Concentration: 500 µg/mL

Buffer: Each vial contains 5 mg BSA, 0.9 mg NaCl, 0.2 mg Na₂HPO₄, 0.05 mg Thimerosal, 0.05 mg Sodium azide.

Preservative: Thimerosal (Merthiolate), Sodium azide

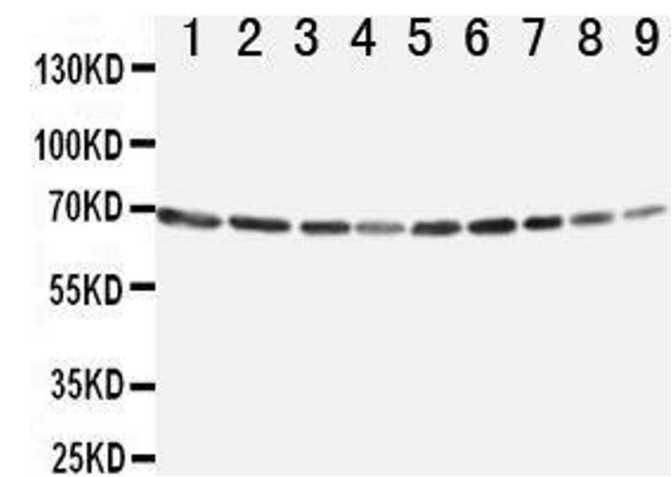
Precaution of Use: This product contains Sodium azide and Thimerosal (Merthiolate): POISONOUS AND HAZARDOUS SUBSTANCES which should be handled by trained staff only.

Handling Advice: Avoid repeated freezing and thawing.

Storage: 4 °C/-20 °C

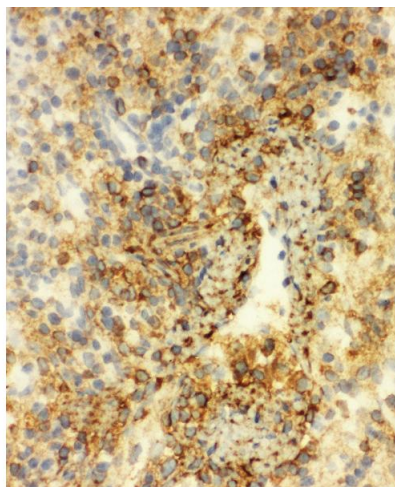
Storage Comment: At -20°C for one year. After reconstitution, at 4°C for one month.
It can also be aliquotted and stored frozen at -20 °C for a longer time. Avoid repeated freezing and thawing.

Expiry Date: 12 months



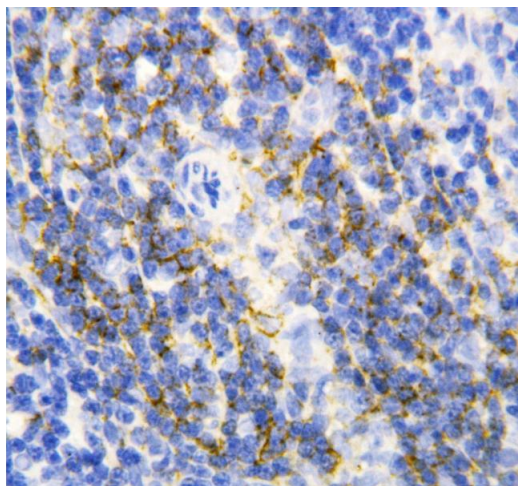
Western Blotting

Image 1. Lane 9: SMMC Cell Lysate



Immunohistochemistry

Image 2. Anti-Annexin VI antibody, IHC(F) IHC(F): Rat Spleen Tissue



Immunohistochemistry

Image 3. Anti-Annexin VI antibody, IHC(P) IHC(P): Rat Spleen Tissue