

Datasheet for ABIN3044405  
**anti-DLD antibody (C-Term)**



[Go to Product page](#)

3 Images

## Overview

Quantity:	100 µg
Target:	DLD
Binding Specificity:	AA 492-509, C-Term
Reactivity:	Human, Rat
Host:	Rabbit
Clonality:	Polyclonal
Conjugate:	This DLD antibody is un-conjugated
Application:	Western Blotting (WB), Immunocytochemistry (ICC), Immunohistochemistry (Paraffin-embedded Sections) (IHC (p)), Immunohistochemistry (Frozen Sections) (IHC (fro))

## Product Details

Purpose:	Rabbit IgG polyclonal antibody for Dihydrolipoyl dehydrogenase, mitochondrial(DLD) detection. Tested with WB, IHC-P, IHC-F, ICC in Human,Mouse,Rat.
Immunogen:	A synthetic peptide corresponding to a sequence at the C-terminus of human DLD(492-509aa EAFREANLAASFGKSINF), different from the related mouse and rat sequences by one amino acid.
Sequence:	EAFREANLAA SFGKSINF
Isotype:	IgG
Cross-Reactivity (Details):	Predicted Cross Reactivity: mouse No cross reactivity with other proteins. Predicted Cross Reactivity: Species predicted to be fit for the product based on sequence

Product Details

	similarities.
Characteristics:	Rabbit IgG polyclonal antibody for Dihydrolipoyl dehydrogenase, mitochondrial(DLD) detection. Tested with WB, IHC-P, IHC-F, ICC in Human,Mouse,Rat. Gene Name: dihydrolipoamide dehydrogenase Protein Name: Dihydrolipoyl dehydrogenase, mitochondrial
Purification:	Immunogen affinity purified.

Target Details

Target:	DLD
Alternative Name:	DLD ( <a href="#">DLD Products</a> )
Background:	<p>DLD, Dihydrolipoamide dehydrogenase, is a component of the pyruvate dehydrogenase complex, the alpha-ketoglutarate dehydrogenase complex, and the branched-chain alpha-keto acid dehydrogenase complex(BCKD). DLD is a flavoprotein enzyme that degrades lipoamide, and produces dihydrolipoamide. The DLD gene contains 14 exons. The gene is localized to 7q31-q32. This gene encodes the L protein of the mitochondrial glycine cleavage system. The L protein, also named dihydrolipoamide dehydrogenase, is also a component of the pyruvate dehydrogenase complex, the alpha-ketoglutarate dehydrogenase complex, and the branched-chain alpha-keto acid dehydrogenase complex.</p> <p>Synonyms: Diaphorase antibody Dihydrolipoamide dehydrogenase antibody Dihydrolipoyl dehydrogenase antibody Dihydrolipoyl dehydrogenase mitochondrial antibody dld antibody DLDH antibody DLDH_HUMAN antibody E3 antibody E3 component of pyruvate dehydrogenase antibody E3 component of pyruvate dehydrogenase complex 2 oxo glutarate complex branched chain keto acid dehydrogenase complex antibody GCSL antibody Glycine cleavage system L protein antibody Glycine cleavage system protein L antibody LAD antibody lipoamide dehydrogenase antibody Lipoamide reductase antibody Lipoyl dehydrogenase antibody mitochondrial antibody OTTHUMP00000206744 antibody OTTHUMP00000206746 antibody OTTHUMP00000206748 antibody OTTHUMP00000206749 antibody PHE 3 antibody PHE3 antibody</p>
UniProt:	<a href="#">P09622</a>
Pathways:	<a href="#">Ribonucleoside Biosynthetic Process</a> , <a href="#">Cell RedoxHomeostasis</a>

## Application Details

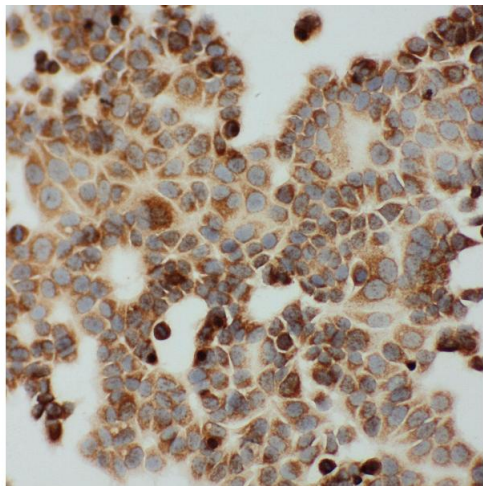
Application Notes:	WB: Concentration: 0.1-0.5 µg/mL, Tested Species: Human, Rat, Predicted Species: Mouse IHC-P: Concentration: 0.5-1 µg/mL, Tested Species: Human, Rat, Predicted Species: Mouse, Epitope Retrieval by Heat: Boiling the paraffin sections in 10 mM citrate buffer, pH 6.0, for 20 mins is required for the staining of formalin/paraffin sections. IHC-F: Concentration: 0.5-1 µg/mL, Tested Species: Rat, Predicted Species: Mouse ICC: Concentration: 0.5-1 µg/mL, Tested Species: Human Notes: Tested Species: Species with positive results. Predicted Species: Species predicted to be fit for the product based on sequence similarities. Other applications have not been tested. Optimal dilutions should be determined by end users.
--------------------	--

Comment:	Antibody can be supported by chemiluminescence kit ABIN921124 in WB, supported by ABIN921231 in IHC(P), IHC(F) and ICC.
----------	---

Restrictions:	For Research Use only
---------------	-----------------------

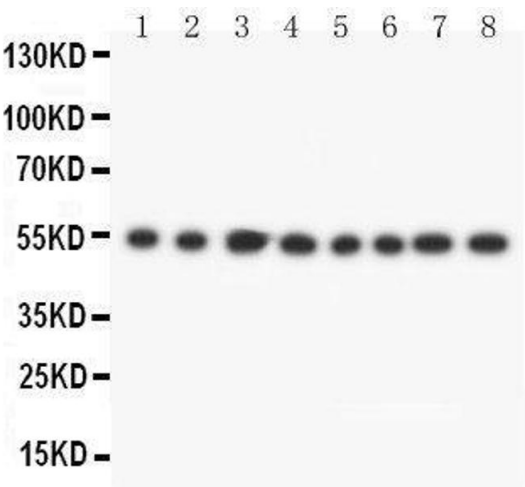
## Handling

Format:	Lyophilized
Reconstitution:	Add 0.2 mL of distilled water will yield a concentration of 500 µg/mL.
Concentration:	500 µg/mL
Buffer:	Each vial contains 5 mg BSA, 0.9 mg NaCl, 0.2 mg Na <sub>2</sub> HPO <sub>4</sub> , 0.05 mg Thimerosal, 0.05 mg Sodium azide.
Preservative:	Thimerosal (Merthiolate), Sodium azide
Precaution of Use:	This product contains Sodium azide and Thimerosal (Merthiolate): POISONOUS AND HAZARDOUS SUBSTANCES which should be handled by trained staff only.
Handling Advice:	Avoid repeated freezing and thawing.
Storage:	4 °C/-20 °C
Storage Comment:	At -20°C for one year. After reconstitution, at 4°C for one month. It can also be aliquotted and stored frozen at -20 °C for a longer time. Avoid repeated freezing and thawing.
Expiry Date:	12 months



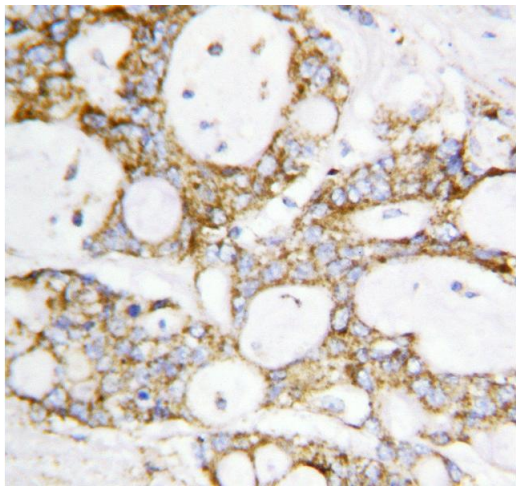
**Immunohistochemistry**

**Image 1.** Anti-Lipoamide Dehydrogenase antibody, ICC ICC:  
MCF-7 Cell



**Western Blotting**

**Image 2.** Lane 8: JURKAT Cell Lysate



**Immunohistochemistry**

**Image 3.** Anti-Lipoamide Dehydrogenase antibody, IHC(P)  
IHC(P): Human Mammary Cancer Tissue