

Datasheet for ABIN3044412  
**anti-MTA1 antibody (C-Term)**



[Go to Product page](#)

3 Images

## Overview

Quantity:	100 µg
Target:	MTA1
Binding Specificity:	AA 676-696, C-Term
Reactivity:	Human, Mouse, Rat
Host:	Rabbit
Clonality:	Polyclonal
Conjugate:	This MTA1 antibody is un-conjugated
Application:	Western Blotting (WB), Immunohistochemistry (Paraffin-embedded Sections) (IHC (p)), Immunohistochemistry (Frozen Sections) (IHC (fro))

## Product Details

Purpose:	Rabbit IgG polyclonal antibody for Metastasis-associated protein MTA1(MTA1) detection. Tested with WB, IHC-P, IHC-F in Human,Mouse,Rat.
Immunogen:	A synthetic peptide corresponding to a sequence at the C-terminus of human MTA1(676-696aa ETKRAARRPYKPIALRQSQUAL), identical to the related mouse and rat sequences.
Sequence:	ETKRAARRPY KPIALRQSQA L
Isotype:	IgG
Cross-Reactivity (Details):	No cross reactivity with other proteins.
Characteristics:	Rabbit IgG polyclonal antibody for Metastasis-associated protein MTA1(MTA1) detection. Tested with WB, IHC-P, IHC-F in Human,Mouse,Rat. Gene Name: metastasis associated 1

## Product Details

---

Protein Name: Metastasis-associated protein MTA1

---

Purification: Immunogen affinity purified.

---

## Target Details

---

Target: MTA1

---

Alternative Name: MTA1 ([MTA1 Products](#))

---

Background: Metastasis-associated protein MTA1 is a protein that in humans is encoded by the MTA1 gene. This gene encodes a protein that was identified in a screen for genes expressed in metastatic cells, specifically, mammary adenocarcinoma cell lines. Expression of this gene has been correlated with the metastatic potential of at least two types of carcinomas although it is also expressed in many normal tissues. By fluorescence in situ hybridization, mapped the MTA1 gene to chromosome 14q32.3. MTA1 is a component of the chromatin remodeling complex that influences gene transcription by modulating target gene chromatin. MTA1 is widely upregulated in many carcinomas.

Synonyms: Metastasis associated 1 antibody|Metastasis associated gene 1 antibody|Metastasis associated gene 1 protein antibody|Metastasis associated protein antibody|Metastasis associated protein MTA 1 antibody|Metastasis associated protein MTA1 antibody|Metastasis-associated protein MTA1 antibody|MTA 1 antibody|MTA1 antibody|MTA1\_HUMAN antibody

---

UniProt: [Q13330](#)

---

Pathways: [Chromatin Binding](#)

---

## Application Details

---

Application Notes: WB: Concentration: 0.1-0.5 µg/mL, Tested Species: Human, Rat, Predicted Species: Mouse  
IHC-P: Concentration: 0.5-1 µg/mL, Tested Species: Human, Mouse, Rat, Epitope Retrieval by Heat: Boiling the paraffin sections in 10 mM citrate buffer, pH 6.0, for 20 mins is required for the staining of formalin/paraffin sections.  
IHC-F: Concentration: 0.5-1 µg/mL, Tested Species: Mouse, Rat, Predicted Species: Human  
Notes: Tested Species: Species with positive results. Predicted Species: Species predicted to be fit for the product based on sequence similarities. Other applications have not been tested.  
Optimal dilutions should be determined by end users.

---

Comment: Antibody can be supported by chemiluminescence kit ABIN921124 in WB, supported by

---

## Application Details

ABIN921231 in IHC(P) and IHC(F).

Restrictions: For Research Use only

## Handling

Format: Lyophilized

Reconstitution: Add 0.2 mL of distilled water will yield a concentration of 500 µg/mL.

Concentration: 500 µg/mL

Buffer: Each vial contains 5 mg BSA, 0.9 mg NaCl, 0.2 mg Na<sub>2</sub>HPO<sub>4</sub>, 0.05 mg Thimerosal, 0.05 mg Sodium azide.

Preservative: Thimerosal (Merthiolate), Sodium azide

Precaution of Use: This product contains Sodium azide and Thimerosal (Merthiolate): POISONOUS AND HAZARDOUS SUBSTANCES which should be handled by trained staff only.

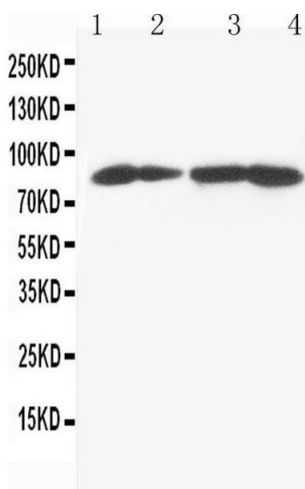
Handling Advice: Avoid repeated freezing and thawing.

Storage: 4 °C/-20 °C

Storage Comment: At -20°C for one year. After reconstitution, at 4°C for one month.  
It can also be aliquotted and stored frozen at -20 °C for a longer time. Avoid repeated freezing and thawing.

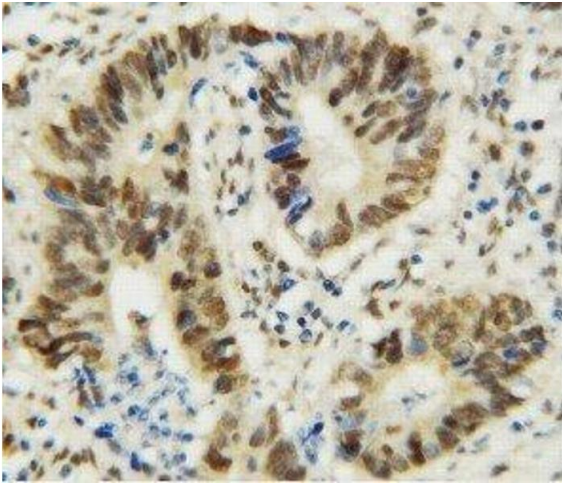
Expiry Date: 12 months

## Images



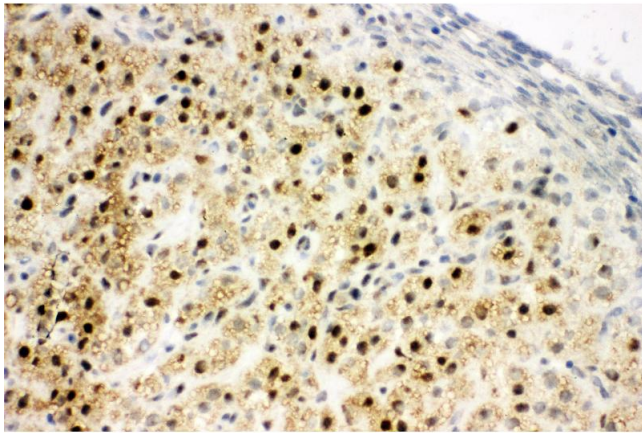
### Western Blotting

**Image 1.** Anti-MTA1 antibody, Western blotting Lane 1: MCF-7 Cell Lysate Lane 2: HELA Cell Lysate Lane 3: JURKAT Cell Lysate Lane 4: CEM Cell Lysate



#### Immunohistochemistry

**Image 2.** Anti-MTA1 antibody, IHC(P) IHC(P): Human Rectal Cancer Tissue



#### Immunohistochemistry

**Image 3.** Anti-MTA1 antibody, IHC(F) IHC(F): Rat Ovary Tissue