



[Go to Product page](#)

Datasheet for ABIN3044434
anti-BCAT1 antibody (C-Term)

2 Images

Overview

Quantity:	100 µg
Target:	BCAT1
Binding Specificity:	AA 360-375, C-Term
Reactivity:	Human
Host:	Rabbit
Clonality:	Polyclonal
Conjugate:	This BCAT1 antibody is un-conjugated
Application:	Western Blotting (WB), Immunohistochemistry (Paraffin-embedded Sections) (IHC (p))

Product Details

Purpose:	Rabbit IgG polyclonal antibody for Branched-chain-amino-acid aminotransferase, cytosolic(BCAT1) detection. Tested with WB, IHC-P in Human.
Immunogen:	A synthetic peptide corresponding to a sequence at the C-terminus of human BCAT1(360-375aa KLASRILSKLTDIQYGR), different from the related mouse sequence by one amino acid, rat sequence by three amino acids.
Sequence:	KLASRILSKL TDIQYGR
Isotype:	IgG
Cross-Reactivity (Details):	No cross reactivity with other proteins.
Characteristics:	Rabbit IgG polyclonal antibody for Branched-chain-amino-acid aminotransferase, cytosolic(BCAT1) detection. Tested with WB, IHC-P in Human. Gene Name: branched chain amino-acid transaminase 1, cytosolic

Product Details

Protein Name: Branched-chain-amino-acid aminotransferase, cytosolic(BCAT(c))

Purification: Immunogen affinity purified.

Target Details

Target: BCAT1

Alternative Name: BCAT1 ([BCAT1 Products](#))

Background: BCAT1, Branched-chain Aminotransferase1, is also known as BCT1. The BCAT1 gene is highly expressed early in embryogenesis, and during organogenesis its expression is localized to the neural tube, the somites, and the mesonephric tubules. The gene is also expressed in several MYC-based tumors. The BCAT1 gene is mapped to chromosome 12. Lack of the enzyme BCT can cause auxotroph, a kind of auxotrophic mutant in Chinese-hamster ovary cells that lacks the ability to grow if alpha-ketoisovaleric acid, alpha-ketoisocaproic acid, and alpha-keto-beta-methylvaleric acid are substituted for valine, leucine, and isoleucine in the culture medium.

Synonyms: BCAT antibody|BCAT(c) antibody|Bcat1 antibody|BCAT1_HUMAN antibody|BCT1 antibody|Branched chain amino acid aminotransferase, cytosolic antibody|branched chain amino-acid transaminase 1, cytosolic antibody|branched chain aminotransferase 1 antibody|branched chain aminotransferase 1, cytosolic antibody|Branched-chain-amino-acid aminotransferase antibody|cytosolic antibody|DKFZp686E12175 antibody|EC 2.6.1.42 antibody|ECA39 antibody|MECA39 antibody|placental protein 18 antibody|PNAS 121 antibody|PP18 antibody|Protein ECA39 antibody

UniProt: [P54687](#)

Application Details

Application Notes: WB: Concentration: 0.1-0.5 µg/mL, Tested Species: Human
IHC-P: Concentration: 0.5-1 µg/mL, Tested Species: Human, Epitope Retrieval by Heat: Boiling the paraffin sections in 10 mM citrate buffer, pH 6.0, for 20 mins is required for the staining of formalin/paraffin sections.
Notes: Tested Species: Species with positive results. Predicted Species: Species predicted to be fit for the product based on sequence similarities. Other applications have not been tested.
Optimal dilutions should be determined by end users.

Comment: Antibody can be supported by chemiluminescence kit ABIN921124 in WB, supported by ABIN921231 in IHC(P).

Application Details

Restrictions: For Research Use only

Handling

Format: Lyophilized

Reconstitution: Add 0.2 mL of distilled water will yield a concentration of 500 µg/mL.

Concentration: 500 µg/mL

Buffer: Each vial contains 5 mg BSA, 0.9 mg NaCl, 0.2 mg Na₂HPO₄, 0.05 mg Thimerosal, 0.05 mg Sodium azide.

Preservative: Thimerosal (Merthiolate), Sodium azide

Precaution of Use: This product contains Sodium azide and Thimerosal (Merthiolate): POISONOUS AND HAZARDOUS SUBSTANCES which should be handled by trained staff only.

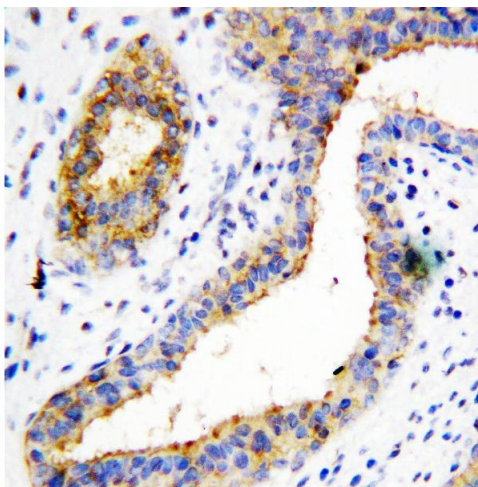
Handling Advice: Avoid repeated freezing and thawing.

Storage: 4 °C/-20 °C

Storage Comment: At -20°C for one year. After reconstitution, at 4°C for one month.
It can also be aliquotted and stored frozen at -20 °C for a longer time. Avoid repeated freezing and thawing.

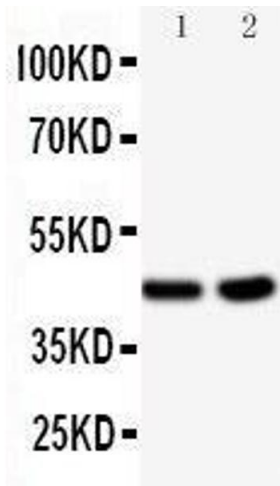
Expiry Date: 12 months

Images



Immunohistochemistry

Image 1. Anti-BCAT1 antibody, IHC(P) IHC(P): Human Mammary Cancer Tissue



Western Blotting

Image 2. Observed bind size: 45KD