

Datasheet for ABIN3044442

**anti-Dopamine Receptor d1 antibody (Middle Region)**[Go to Product page](#)**2** Images

## Overview

Quantity:	100 µg
Target:	Dopamine Receptor d1 (DRD1)
Binding Specificity:	AA 221-242, Middle Region
Reactivity:	Human, Rat
Host:	Rabbit
Clonality:	Polyclonal
Conjugate:	This Dopamine Receptor d1 antibody is un-conjugated
Application:	Western Blotting (WB), Immunohistochemistry (Paraffin-embedded Sections) (IHC (p))

## Product Details

Purpose:	Rabbit IgG polyclonal antibody for D(1A) dopamine receptor(DRD1) detection. Tested with WB, IHC-P in Human,Mouse,Rat.
Immunogen:	A synthetic peptide corresponding to a sequence in the middle region of human DRD1 (221-242aa AQKQIRRIAALERA AVHAKNCQ), different from the related rat and mouse sequences by one amino acid.
Sequence:	AQKQIRRIAA LERAAVHAKN CQ
Isotype:	IgG
Cross-Reactivity (Details):	<p>Predicted Cross Reactivity: mouse</p> <p>No cross reactivity with other proteins.</p> <p>Predicted Cross Reactivity: Species predicted to be fit for the product based on sequence similarities.</p>

## Product Details

Characteristics:	Rabbit IgG polyclonal antibody for D(1A) dopamine receptor(DRD1) detection. Tested with WB, IHC-P in Human,Mouse,Rat. Gene Name: dopamine receptor D1 Protein Name: D(1A) dopamine receptor
Purification:	Immunogen affinity purified.

## Target Details

Target:	Dopamine Receptor d1 (DRD1)
Alternative Name:	DRD1 ( <a href="#">DRD1 Products</a> )
Background:	<p>Dopamine receptor D1, also known as DRD1, is a human gene. It is the most highly expressed DA receptor subtype among the DA receptor family. Receptors for dopamine have been classified into two functional types, D1 and D2. They belong to the family of receptors acting through G(or guanine nucleotide-binding) proteins. D2 receptors inhibit adenylyl cyclase, but D1 receptors stimulate adenylyl cyclase and activate cyclic AMP-dependent protein kinases. Dopamine D1 and D2 receptors are targets of drug therapy in many psychomotor disorders, including Parkinson's disease and schizophrenia, and may also have a role in drug addiction and alcoholism. D1 receptors regulate neuron growth and differentiation, influence behaviour and modify dopamine D2 receptor-mediated events. And the presence of a D1 receptor gene restriction fragment length polymorphism will be helpful for future disease linkage studies. DRD1 also regulates the neurochemical architecture of the striatum and is critical for the normal expression of motor activity.</p> <p>Synonyms: D(1A) dopamine receptor antibody D1A dopamine receptor antibody DADR antibody Dopamine D1 receptor antibody dopamine receptor D1 antibody DR D1 antibody DR D1A antibody DRD 1 antibody DRD 1A antibody DRD1 antibody DRD1_HUMAN antibody DRD1A antibody</p>

UniProt:	<a href="#">P21728</a>
Pathways:	<a href="#">cAMP Metabolic Process</a> , <a href="#">Inositol Metabolic Process</a> , <a href="#">Protein targeting to Nucleus</a> , <a href="#">Feeding Behaviour</a> , <a href="#">Smooth Muscle Cell Migration</a> , <a href="#">Regulation of long-term Neuronal Synaptic Plasticity</a>

## Application Details

Application Notes:	WB: Concentration: 0.1-0.5 µg/mL, Tested Species: Human, Rat, Predicted Species: Mouse IHC-P: Concentration: 0.5-1 µg/mL, Tested Species: Human, Rat, Predicted Species: Mouse,
--------------------	--

## Application Details

Epitope Retrieval by Heat: Boiling the paraffin sections in 10 mM citrate buffer, pH 6.0, for 20 mins is required for the staining of formalin/paraffin sections.

Notes: Tested Species: Species with positive results. Predicted Species: Species predicted to be fit for the product based on sequence similarities. Other applications have not been tested.

Optimal dilutions should be determined by end users.

Comment: Antibody can be supported by chemiluminescence kit ABIN921124 in WB, supported by ABIN921231 in IHC(P).

Restrictions: For Research Use only

## Handling

Format: Lyophilized

Reconstitution: Add 0.2 mL of distilled water will yield a concentration of 500 µg/mL.

Concentration: 500 µg/mL

Buffer: Each vial contains 5 mg BSA, 0.9 mg NaCl, 0.2 mg Na<sub>2</sub>HPO<sub>4</sub>, 0.05 mg Thimerosal, 0.05 mg Sodium azide.

Preservative: Thimerosal (Merthiolate), Sodium azide

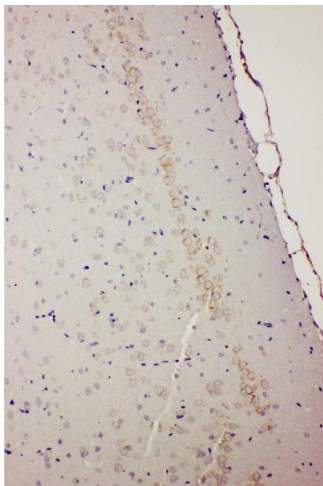
Precaution of Use: This product contains Sodium azide and Thimerosal (Merthiolate): POISONOUS AND HAZARDOUS SUBSTANCES which should be handled by trained staff only.

Handling Advice: Avoid repeated freezing and thawing.

Storage: 4 °C/-20 °C

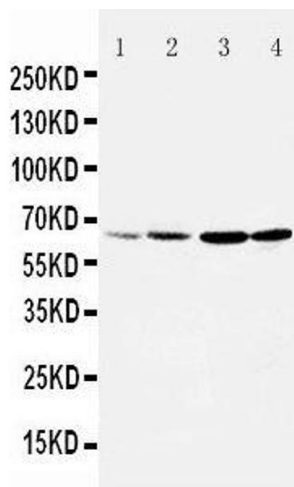
Storage Comment: At -20°C for one year. After reconstitution, at 4°C for one month.  
It can also be aliquotted and stored frozen at -20 °C for a longer time. Avoid repeated freezing and thawing.

Expiry Date: 12 months



Immunohistochemistry

**Image 1.** Anti-Dopamine Receptor D1 antibody, IHC(P)  
IHC(P): Rat Brain Tissue



Western Blotting

**Image 2.** Anti-Dopamine Receptor D1 antibody, Western blotting  
Lane 1: Rat Testis Tissue Lysate Lane 2: Rat Brain Tissue Lysate  
Lane 3: U87 Cell Lysate Lane 4: HELA Cell Lysate