

Datasheet for ABIN3044448  
**anti-DRD3 antibody (C-Term)**



[Go to Product page](#)

2 Images

## Overview

Quantity:	100 µg
Target:	DRD3
Binding Specificity:	AA 352-367, C-Term
Reactivity:	Human, Rat
Host:	Rabbit
Clonality:	Polyclonal
Conjugate:	This DRD3 antibody is un-conjugated
Application:	Western Blotting (WB), Immunohistochemistry (Paraffin-embedded Sections) (IHC (p))

## Product Details

Purpose:	Rabbit IgG polyclonal antibody for D(3) dopamine receptor(DRD3) detection. Tested with WB, IHC-P in Human,Mouse,Rat.
Immunogen:	A synthetic peptide corresponding to a sequence at the C-terminus of human Dopamine Receptor D3(352-367aa NTHCQTCHVSPELYSA), different from the related rat and mouse sequences by two amino acids.
Sequence:	NTHCQTCHVS PELYSA
Isotype:	IgG
Cross-Reactivity (Details):	Predicted Cross Reactivity: mouse No cross reactivity with other proteins. Predicted Cross Reactivity: Species predicted to be fit for the product based on sequence similarities.

## Product Details

---

Characteristics:	Rabbit IgG polyclonal antibody for D(3) dopamine receptor(DRD3) detection. Tested with WB, IHC-P in Human,Mouse,Rat. Gene Name: dopamine receptor D3 Protein Name: D(3) dopamine receptor
Purification:	Immunogen affinity purified.

## Target Details

---

Target:	DRD3
Alternative Name:	DRD3 ( <a href="#">DRD3 Products</a> )
Background:	<p>DRD3 is a dopamine receptor that differs in its pharmacology and signaling system from the D1 and D2 receptors and represents both an autoreceptor and a postsynaptic receptor. DRD3 is localized to limbic areas of the brain, which are associated with cognitive, emotional, and endocrine functions. The DRD3 gene, which is mapped to chromosome 3, is like the DRD2 gene but unlike most other members of this superfamily and it contains introns, 5 in number. The position of 2 of the introns corresponds to that of introns in DRD2. The D3 receptor appeared to mediate some of the effects of antipsychotic drugs and drugs used in the treatment of Parkinson disease, which were previously thought to interact only with D2 receptors.</p> <p>Synonyms: 3dopamine receptor antibody D antibody D(3) dopamine receptor antibody Dopamine D3 receptor antibody Dopamine receptor D3 antibody DRD3 antibody DRD3_HUMAN antibody ETM1 antibody FET1 antibody</p>
UniProt:	<a href="#">P35462</a>
Pathways:	<a href="#">Regulation of Systemic Arterial Blood Pressure by Hormones, cAMP Metabolic Process, Regulation of G-Protein Coupled Receptor Protein Signaling, Proton Transport, Negative Regulation of Transporter Activity</a>

## Application Details

---

Application Notes:	WB: Concentration: 0.1-0.5 µg/mL, Tested Species: Human, Rat, Predicted Species: Mouse IHC-P: Concentration: 0.5-1 µg/mL, Tested Species: Rat, Predicted Species: Human, Mouse, Epitope Retrieval by Heat: Boiling the paraffin sections in 10 mM citrate buffer, pH 6.0, for 20 mins is required for the staining of formalin/paraffin sections. Notes: Tested Species: Species with positive results. Predicted Species: Species predicted to be fit for the product based on sequence similarities. Other applications have not been tested.
--------------------	--

## Application Details

---

Optimal dilutions should be determined by end users.

Comment: Antibody can be supported by chemiluminescence kit ABIN921124 in WB, supported by ABIN921231 in IHC(P).

Restrictions: For Research Use only

## Handling

---

Format: Lyophilized

Reconstitution: Add 0.2 mL of distilled water will yield a concentration of 500 µg/mL.

Concentration: 500 µg/mL

Buffer: Each vial contains 5 mg BSA, 0.9 mg NaCl, 0.2 mg Na<sub>2</sub>HPO<sub>4</sub>, 0.05 mg Thimerosal, 0.05 mg Sodium azide.

Preservative: Thimerosal (Merthiolate), Sodium azide

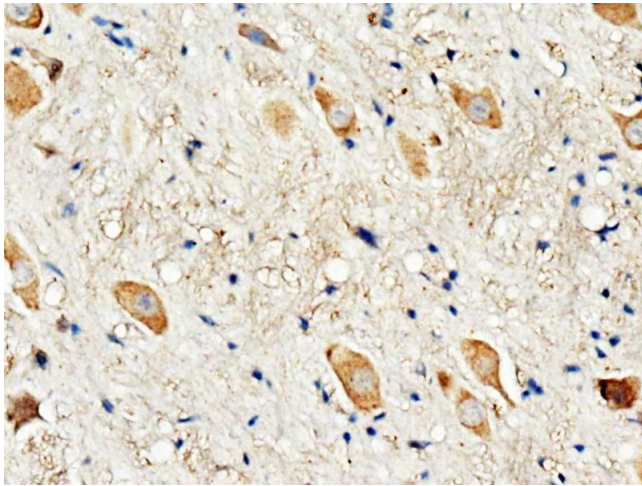
Precaution of Use: This product contains Sodium azide and Thimerosal (Merthiolate): POISONOUS AND HAZARDOUS SUBSTANCES which should be handled by trained staff only.

Handling Advice: Avoid repeated freezing and thawing.

Storage: 4 °C/-20 °C

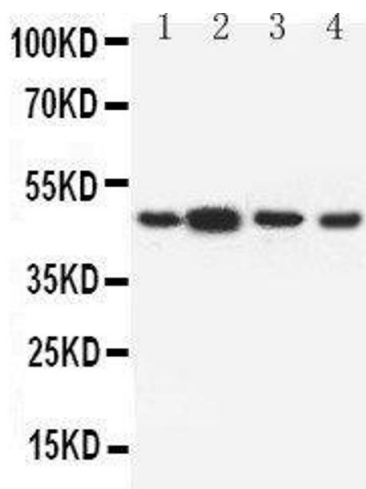
Storage Comment: At -20°C for one year. After reconstitution, at 4°C for one month.  
It can also be aliquotted and stored frozen at -20 °C for a longer time. Avoid repeated freezing and thawing.

Expiry Date: 12 months



### Immunohistochemistry

**Image 1.** Anti-Dopamine Receptor D3 antibody, IHC(P)  
IHC(P): Rat Brain Tissue



### Western Blotting

**Image 2.** Anti-Dopamine Receptor D3 antibody, Western blotting Lane 1: Rat Testis Tissue Lysate Lane 2: Rat Brain Tissue Lysate Lane 3: U87 Cell Lysate Lane 4: HELA Cell Lysate