

Datasheet for ABIN3044449
anti-SPARC antibody (C-Term)

3 Images

[Go to Product page](#)

Overview

Quantity:	100 µg
Target:	SPARC
Binding Specificity:	AA 284-303, C-Term
Reactivity:	Human
Host:	Rabbit
Clonality:	Polyclonal
Application:	Western Blotting (WB), Immunohistochemistry (Paraffin-embedded Sections) (IHC (p))

Product Details

Purpose:	Rabbit IgG polyclonal antibody for SPARC(SPARC) detection. Tested with WB, IHC-P in Human.
Immunogen:	A synthetic peptide corresponding to a sequence at the C-terminus of human SPARC(284-303aa DEWAGCFGIKQKDIDKDLVI).
Sequence:	DEWAGCFGIK QKDIDKDLVI
Isotype:	IgG
Cross-Reactivity (Details):	No cross reactivity with other proteins.
Characteristics:	Rabbit IgG polyclonal antibody for SPARC(SPARC) detection. Tested with WB, IHC-P in Human. Gene Name: secreted protein, acidic, cysteine-rich(osteonectin) Protein Name: SPARC
Purification:	Immunogen affinity purified.

Target Details

Target:	SPARC
Alternative Name:	SPARC (SPARC Products)
Background:	<p>SPARC, secreted protein acidic and rich in cysteine, also known as Osteonectin is a protein that in humans is encoded by the SPARC gene. The human SPARC gene is 26.5 kb long, and contains 10 exons and 9 introns and is located on chromosome 5q31-q33. SPARC is a glycoprotein of 40 kD. SPARC is an acidic, cysteine-rich glycoprotein consisting of a single polypeptide chain that can be broken into 4 domains: 1) an Ca⁺⁺ binding domains near the glutamic acidic-rich region at the amino terminus(domain I), 2) a cysteine- rich(domain II), 3) a hydrophilic region(domain III) and 4) an EF hand motif at the carboxy terminus region(domain IV). Osteonectin is a glycoprotein in the bone that binds sodium. It is secreted by osteoblasts during bone formation, initiating mineralization and promoting mineral crystal formation. Osteonectin also shows affinity for collagen in addition to bone mineral calcium. A correlation between osteonectin over expression and ampullary cancers and chronic pancreatitis has been found.</p> <p>Synonyms: AA517111 antibody Basement membrane protein 40 antibody Basement-membrane protein 40 antibody BM 40 antibody BM-40 antibody BM40 antibody Cysteine rich protein antibody hm:zeh0062 antibody MGC128090 antibody ON antibody Osteonectin antibody Secreted acidic cystein rich glycoprotein antibody Secreted protein acidic and rich in cysteine antibody Secreted protein acidic cysteine rich(osteonectin) antibody Secreted protein acidic cysteine rich antibody SPARC antibody SPRC antibody SPRC_HUMAN antibody</p>
UniProt:	P09486
Pathways:	Autophagy

Application Details

Application Notes:	<p>WB: Concentration: 0.1-0.5 µg/mL, Tested Species: Human</p> <p>IHC-P: Concentration: 0.5-1 µg/mL, Tested Species: Human, Epitope Retrieval by Heat: Boiling the paraffin sections in 10 mM citrate buffer, pH 6.0, for 20 mins is required for the staining of formalin/paraffin sections.</p> <p>Notes: Tested Species: Species with positive results. Predicted Species: Species predicted to be fit for the product based on sequence similarities. Other applications have not been tested.</p> <p>Optimal dilutions should be determined by end users.</p>
Comment:	Antibody can be supported by chemiluminescence kit ABIN921124 in WB, supported by

Application Details

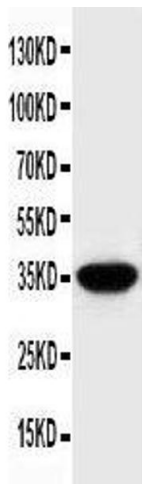
ABIN921231 in IHC(P).

Restrictions: For Research Use only

Handling

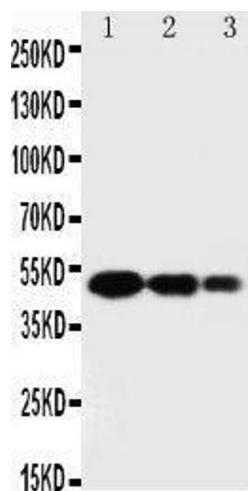
Format:	Lyophilized
Reconstitution:	Add 0.2 mL of distilled water will yield a concentration of 500 µg/mL.
Concentration:	500 µg/mL
Buffer:	Each vial contains 5 mg BSA, 0.9 mg NaCl, 0.2 mg Na ₂ HPO ₄ , 0.05 mg Thimerosal, 0.05 mg Sodium azide.
Preservative:	Thimerosal (Merthiolate), Sodium azide
Precaution of Use:	This product contains Sodium azide and Thimerosal (Merthiolate): POISONOUS AND HAZARDOUS SUBSTANCES which should be handled by trained staff only.
Handling Advice:	Avoid repeated freezing and thawing.
Storage:	4 °C/-20 °C
Storage Comment:	At -20°C for one year. After reconstitution, at 4°C for one month. It can also be aliquotted and stored frozen at -20 °C for a longer time. Avoid repeated freezing and thawing.
Expiry Date:	12 months

Images



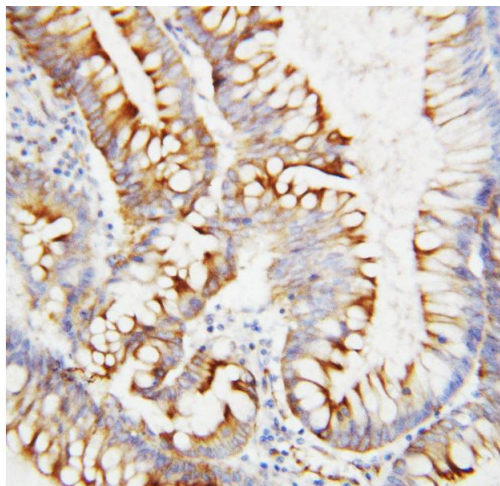
Western Blotting

Image 1. Anti-SPARC antibody, Western blotting WB: HELA Cell Lysate



Western Blotting

Image 2. Anti-SPARC antibody, Western blotting Lane 1: Recombinant Human SPARC Protein 10ng Lane 2: Recombinant Human SPARC Protein 5ng Lane 3: Recombinant Human SPARC Protein 2.5ng



Immunohistochemistry

Image 3. Anti-SPARC antibody, IHC(P) IHC(P): Human Intestinal Cancer Tissue