

Datasheet for ABIN3044452
anti-GZMA antibody (Middle Region)

2 Images

[Go to Product page](#)

Overview

Quantity:	100 µg
Target:	GZMA
Binding Specificity:	AA 175-190, Middle Region
Reactivity:	Human
Host:	Rabbit
Clonality:	Polyclonal
Conjugate:	This GZMA antibody is un-conjugated
Application:	Western Blotting (WB), Immunohistochemistry (Paraffin-embedded Sections) (IHC (p))

Product Details

Purpose:	Rabbit IgG polyclonal antibody for Granzyme A(GZMA) detection. Tested with WB, IHC-P in Human.
Immunogen:	A synthetic peptide corresponding to a sequence in the middle region of human Granzyme A(175-190aa DRKVCNDRNHYNFNPV).
Sequence:	DRKVCNDRNH YNFNPV
Isotype:	IgG
Cross-Reactivity (Details):	No cross reactivity with other proteins.
Characteristics:	<p>Rabbit IgG polyclonal antibody for Granzyme A(GZMA) detection. Tested with WB, IHC-P in Human.</p> <p>Gene Name: granzyme A(granzyme 1, cytotoxic T-lymphocyte-associated serine esterase 3)</p> <p>Protein Name: Granzyme A</p>

Product Details

Purification: Immunogen affinity purified.

Target Details

Target: GZMA

Alternative Name: GZMA ([GZMA Products](#))

Background: Granzyme A is a protein that in humans is encoded by the GZMA gene. Cytolytic T lymphocytes(CTL) and natural killer(NK) cells share the remarkable ability to recognize, bind, and lyse specific target cells. They are thought to protect their host by lysing cells bearing on their surface "nonself" antigens, usually peptides or proteins resulting from infection by intracellular pathogens. The protein described here is a T cell- and natural killer cell-specific serine protease that may function as a common component necessary for lysis of target cells by cytotoxic T lymphocytes and natural killer cells. GZMA induces caspase-independent apoptosis in a characteristic manner, except it causes a distinctive form of DNA damage: single-stranded DNA nicking. A target of GZMA is the SET complex, including HMGB2 and ANP32A .

Synonyms: CTL tryptase antibody|CTLA3 antibody|Cytolytic t cell and natural killer cell specific trypsin like serine protease antibody|Cytotoxic T lymphocyte associated serine esterase 3 antibody|Cytotoxic T lymphocyte proteinase 1 antibody|Cytotoxic T-lymphocyte proteinase 1 antibody|Fragmentin 1 antibody|Fragmentin-1 antibody|GRAA_HUMAN antibody|Granzyme 1 cytotoxic T lymphocyte associated serine esterase 3 antibody|Granzyme A(Cytotoxic T lymphocyte associated serine esterase 3, Hanukah factor serine protease) antibody|Granzyme A(granzyme 1, cytotoxic T lymphocyte associated serine esterase 3) antibody|Granzyme A antibody|Granzyme A precursor antibody|Granzyme-1 antibody|GZMA antibody|H factor antibody|Hanukah factor serine protease antibody|Hanukkah factor antibody|HF antibody|HFSP antibody|TSP1 antibody

UniProt: [P12544](#)

Pathways: [Apoptosis](#)

Application Details

Application Notes: WB: Concentration: 0.1-0.5 µg/mL, Tested Species: Human
IHC-P: Concentration: 0.5-1 µg/mL, Tested Species: Human, Epitope Retrieval by Heat: Boiling the paraffin sections in 10 mM citrate buffer, pH 6.0, for 20 mins is required for the staining of

Application Details

formalin/paraffin sections.

Notes: Tested Species: Species with positive results. Predicted Species: Species predicted to be fit for the product based on sequence similarities. Other applications have not been tested.

Optimal dilutions should be determined by end users.

Comment: Antibody can be supported by chemiluminescence kit ABIN921124 in WB, supported by ABIN921231 in IHC(P).

Restrictions: For Research Use only

Handling

Format: Lyophilized

Reconstitution: Add 0.2 mL of distilled water will yield a concentration of 500 µg/mL.

Concentration: 500 µg/mL

Buffer: Each vial contains 5 mg BSA, 0.9 mg NaCl, 0.2 mg Na₂HPO₄, 0.05 mg Thimerosal, 0.05 mg Sodium azide.

Preservative: Thimerosal (Merthiolate), Sodium azide

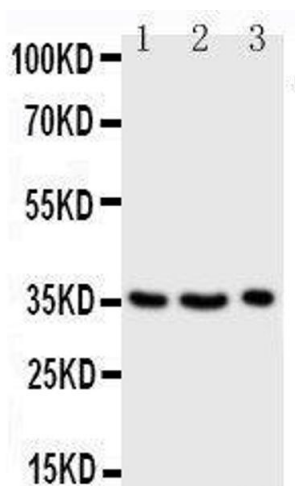
Precaution of Use: This product contains Sodium azide and Thimerosal (Merthiolate): POISONOUS AND HAZARDOUS SUBSTANCES which should be handled by trained staff only.

Handling Advice: Avoid repeated freezing and thawing.

Storage: 4 °C/-20 °C

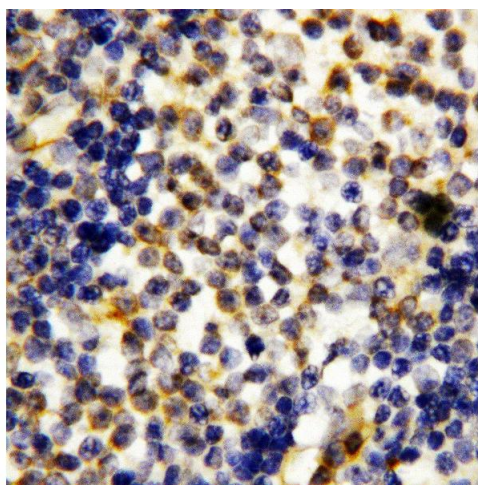
Storage Comment: At -20°C for one year. After reconstitution, at 4°C for one month.
It can also be aliquotted and stored frozen at -20 °C for a longer time. Avoid repeated freezing and thawing.

Expiry Date: 12 months



Western Blotting

Image 1. Anti-Granzyme A antibody, Western blotting Lane 1: JURKAT Cell Lysate Lane 2: CEM Cell Lysate Lane 3: RAJI Cell Lysate



Immunohistochemistry

Image 2. Anti-Granzyme A antibody, IHC(P) IHC(P): Human Tonsil Tissue