

Datasheet for ABIN3044468  
**anti-SLC9A2 antibody (C-Term)**

## 3 Images

[Go to Product page](#)

## Overview

Quantity:	100 µg
Target:	SLC9A2
Binding Specificity:	AA 666-684, C-Term
Reactivity:	Human, Rat
Host:	Rabbit
Clonality:	Polyclonal
Application:	Western Blotting (WB), Immunohistochemistry (Paraffin-embedded Sections) (IHC (p))

## Product Details

Purpose:	Rabbit IgG polyclonal antibody for Sodium/hydrogen exchanger 2(SLC9A2) detection. Tested with WB, IHC-P in Human,Mouse,Rat.
Immunogen:	A synthetic peptide corresponding to a sequence at the C-terminus of human SLC9A2(666-684aa RYLSLPKNTKLPEKLQKRR), different from the related rat and mouse sequences by two amino acids.
Sequence:	RYLSLPKNTK LPEKLQKRR
Isotype:	IgG
Cross-Reactivity (Details):	<p>Predicted Cross Reactivity: mouse</p> <p>No cross reactivity with other proteins.</p> <p>Predicted Cross Reactivity: Species predicted to be fit for the product based on sequence similarities.</p>
Characteristics:	Rabbit IgG polyclonal antibody for Sodium/hydrogen exchanger 2(SLC9A2) detection. Tested

## Product Details

with WB, IHC-P in Human, Mouse, Rat.

Gene Name: solute carrier family 9, subfamily A(NHE2, cation proton antiporter 2), member 2

Protein Name: Sodium/hydrogen exchanger 2

Purification: Immunogen affinity purified.

## Target Details

Target: SLC9A2

Alternative Name: SLC9A2 ([SLC9A2 Products](#))

Background: Sodium-hydrogen exchanger 2, also called SLC9A2 or NHE2 is a protein that in humans is encoded by the SLC9A2 gene. This gene is mapped to 2q12.1. The Na<sup>+</sup>/H<sup>+</sup> exchangers(NHE) are membrane proteins involved in cell volume. The exchanger(which they called NHE2) is found in several tissues, including intestine and kidney, and is highly expressed in villus and distal convoluted tubules. This gene is involved in pH regulation to eliminate acids generated by active metabolism or to counter adverse environmental conditions. It seems to play an important role in colonic sodium absorption.

Synonyms: H7 antibody|Na(+)/H(+) exchanger 2 antibody|NHE 2 antibody|NHE-2 antibody|NHE2 antibody|SL9A2\_HUMAN antibody|Slc9a2 antibody|Sodium/hydrogen exchanger antibody|Sodium/hydrogen exchanger 2 antibody|Solute carrier family 9(sodium/hydrogen exchanger), member 2 antibody|Solute carrier family 9 member 2 antibody|Solute carrier family 9, member 2 antibody

Pathways: [Proton Transport](#)

## Application Details

Application Notes: WB: Concentration: 0.1-0.5 µg/mL, Tested Species: Rat, Predicted Species: Human, Mouse  
IHC-P: Concentration: 0.5-1 µg/mL, Tested Species: Human, Rat, Predicted Species: Mouse,  
Epitope Retrieval by Heat: Boiling the paraffin sections in 10 mM citrate buffer, pH 6.0, for 20 mins is required for the staining of formalin/paraffin sections.  
Notes: Tested Species: Species with positive results. Predicted Species: Species predicted to be fit for the product based on sequence similarities. Other applications have not been tested.  
Optimal dilutions should be determined by end users.

Comment: Antibody can be supported by chemiluminescence kit ABIN921124 in WB, supported by ABIN921231 in IHC(P).

## Application Details

Restrictions: For Research Use only

## Handling

Format: Lyophilized

Reconstitution: Add 0.2 mL of distilled water will yield a concentration of 500 µg/mL.

Concentration: 500 µg/mL

Buffer: Each vial contains 5 mg BSA, 0.9 mg NaCl, 0.2 mg Na<sub>2</sub>HPO<sub>4</sub>, 0.05 mg Thimerosal, 0.05 mg Sodium azide.

Preservative: Thimerosal (Merthiolate), Sodium azide

Precaution of Use: This product contains Sodium azide and Thimerosal (Merthiolate): POISONOUS AND HAZARDOUS SUBSTANCES which should be handled by trained staff only.

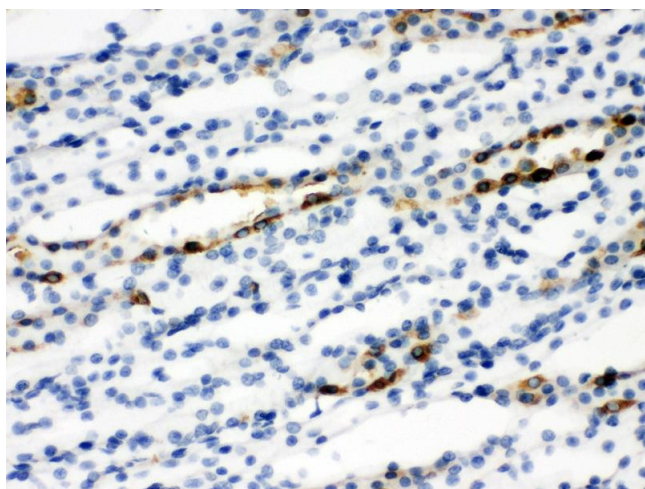
Handling Advice: Avoid repeated freezing and thawing.

Storage: 4 °C/-20 °C

Storage Comment: At -20°C for one year. After reconstitution, at 4°C for one month.  
It can also be aliquotted and stored frozen at -20 °C for a longer time. Avoid repeated freezing and thawing.

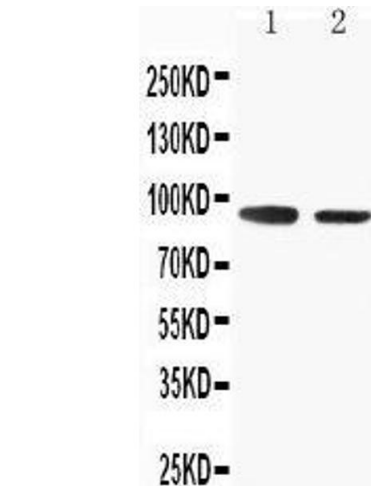
Expiry Date: 12 months

## Images



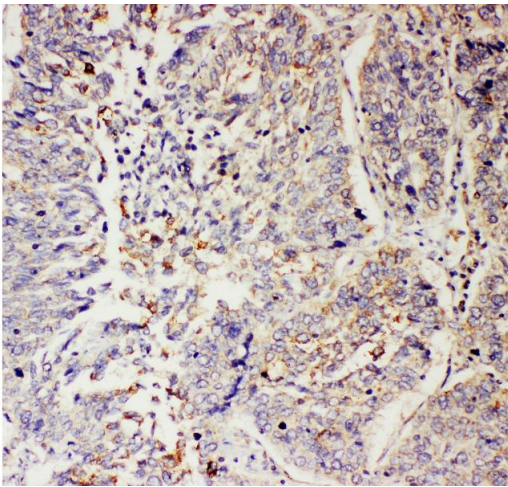
### Immunohistochemistry

**Image 1.** Anti-SLC9A2 antibody, IHC(P) IHC(P): Rat Kidney Tissue



**Western Blotting**

**Image 2.** Anti-SLC9A2 antibody, Western blotting Lane 1: Rat Skeletal Muscle Tissue Lysate Lane 2: Rat Kidney Tissue Lysate



**Immunohistochemistry**

**Image 3.** Anti-SLC9A2 antibody, IHC(P) IHC(P): Human Lung Cancer Tissue