



Datasheet for ABIN3044477
anti-SOX2 antibody (Middle Region)



[Go to Product page](#)

4 Images

2 Publications

Overview

Quantity:	100 µg
Target:	SOX2
Binding Specificity:	AA 171-183, Middle Region
Reactivity:	Human, Mouse, Rat
Host:	Rabbit
Clonality:	Polyclonal
Conjugate:	This SOX2 antibody is un-conjugated
Application:	Western Blotting (WB), Immunohistochemistry (Paraffin-embedded Sections) (IHC (p))

Product Details

Purpose:	Rabbit IgG polyclonal antibody for Transcription factor SOX-2(SOX2) detection. Tested with WB, IHC-P in Human,Mouse,Rat.
Immunogen:	A synthetic peptide corresponding to a sequence in the middle region of human SOX2(171-183aa YSMMQDQLGYPQH), different from the related mouse and rat sequence by one amino acid.
Sequence:	YSMMQDQLGY PQH
Isotype:	IgG
Cross-Reactivity (Details):	No cross reactivity with other proteins.
Characteristics:	Rabbit IgG polyclonal antibody for Transcription factor SOX-2(SOX2) detection. Tested with WB, IHC-P in Human,Mouse,Rat. Gene Name: SRY(sex determining region Y)-box 2

Product Details

Protein Name: Transcription factor SOX-2

Purification: Immunogen affinity purified.

Target Details

Target: SOX2

Alternative Name: SOX2 ([SOX2 Products](#))

Background: SRY(sex determining region Y)-box 2, also known as SOX2, is a transcription factor that is essential for maintaining self-renewal, or pluripotency of undifferentiated embryonic stem cells. Sox2 is a member of the Sox family of transcription factors, which have been shown to play key roles in many stages of mammalian development. This gene is mapped to 3q26.33. It is found that SOX2 can regulate OCT3/4 expression and maintains ES pluripotency through upstream transcription factors. SOX2 is identified as a lineage-survival oncogene in lung and esophageal squamous cell carcinoma. In addition to those, SOX2 has a critical role in maintenance of embryonic and neural stem cells and holds great promise in research involving induced pluripotency, an emerging and very promising field of regenerative medicine.

Synonyms: ANOP3 antibody|cb236 antibody|Delta EF2a antibody|lcc antibody|MCOPS3 antibody|MGC148683 antibody|MGC2413 antibody|RGD1565646 antibody|Sex determining region Y box 2 antibody|SOX 2 antibody|Sox2 antibody|SRY(sex determining region Y) box 2 antibody|SRY box containing gene 2 antibody|SRY related HMG box 2 antibody|SRY related HMG box gene 2 antibody|SRY-box 2 antibody|Transcription factor SOX 2 antibody|Transcription factor SOX-2 antibody|lysb antibody

UniProt: [P48431](#)

Pathways: [Dopaminergic Neurogenesis](#), [Sensory Perception of Sound](#), [Stem Cell Maintenance](#), [Cell RedoxHomeostasis](#)

Application Details

Application Notes: WB: Concentration: 0.1-0.5 µg/mL, Tested Species: Human, Mouse, Rat
IHC-P: Concentration: 0.5-1 µg/mL, Tested Species: Human, Mouse, Rat, Epitope Retrieval by Heat: Boiling the paraffin sections in 10 mM citrate buffer, pH 6.0, for 20 mins is required for the staining of formalin/paraffin sections.
Notes: Tested Species: Species with positive results. Predicted Species: Species predicted to be fit for the product based on sequence similarities. Other applications have not been tested.

Application Details

Optimal dilutions should be determined by end users.

Comment: Antibody can be supported by chemiluminescence kit ABIN921124 in WB, supported by ABIN921231 in IHC(P).

Restrictions: For Research Use only

Handling

Format: Lyophilized

Reconstitution: Add 0.2 mL of distilled water will yield a concentration of 500 µg/mL.

Concentration: 500 µg/mL

Buffer: Each vial contains 5 mg BSA, 0.9 mg NaCl, 0.2 mg Na₂HPO₄, 0.05 mg Thimerosal, 0.05 mg Sodium azide.

Preservative: Thimerosal (Merthiolate), Sodium azide

Precaution of Use: This product contains Sodium azide and Thimerosal (Merthiolate): POISONOUS AND HAZARDOUS SUBSTANCES which should be handled by trained staff only.

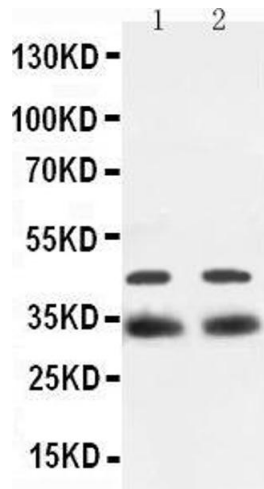
Handling Advice: Avoid repeated freezing and thawing.

Storage: 4 °C/-20 °C

Storage Comment: At -20°C for one year. After reconstitution, at 4°C for one month.
It can also be aliquotted and stored frozen at -20 °C for a longer time. Avoid repeated freezing and thawing.

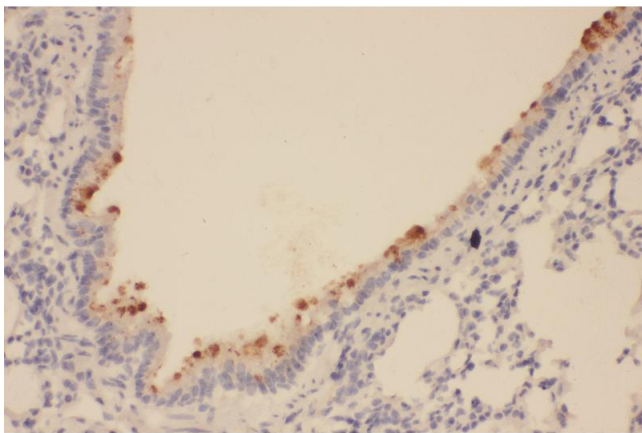
Publications

Product cited in: Whiteland, Nicholls, Shimeld, Easty, Williams, Hill: "Immunohistochemical detection of T-cell subsets and other leukocytes in paraffin-embedded rat and mouse tissues with monoclonal antibodies." in: **The journal of histochemistry and cytochemistry : official journal of the Histochemistry Society**, Vol. 43, Issue 3, pp. 313-20, (1995) ([PubMed](#)).



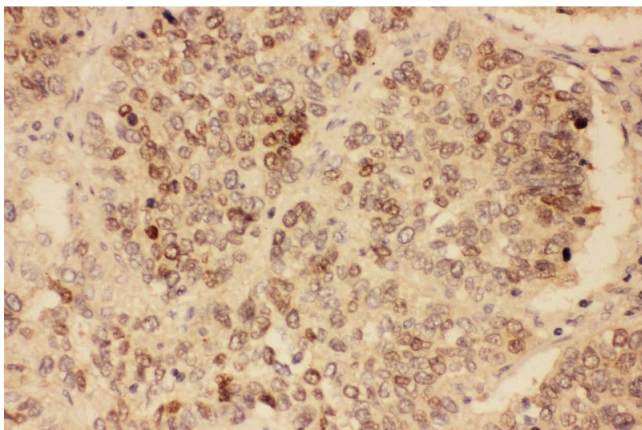
Western Blotting

Image 1.



Immunohistochemistry

Image 2. Anti-SOX2 antibody, IHC(P) IHC(P): Rat Lung Tissue



Immunohistochemistry

Image 3. Anti-SOX2 antibody, IHC(P) IHC(P): Human Lung Cancer Tissue

Please check the [product details page](#) for more images. Overall 4 images are available for ABIN3044477.